

# Basic Report



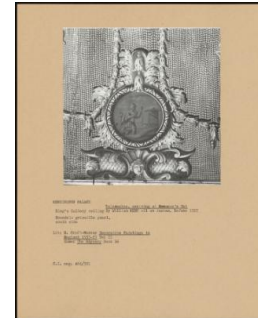
: PA-F00127-0075

**Title:** John Duns Scotus (ca. 1265-1307)



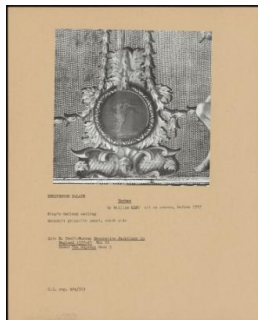
: PA-F00124-0003

**Title:** Odysseus Recognised by His Dog



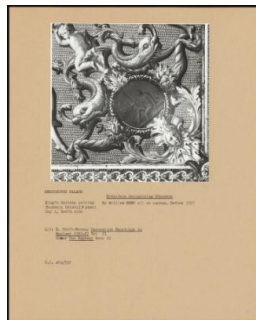
: PA-F00124-0005

**Title:** Telemachus, Arriving at Eumaeus's Hut



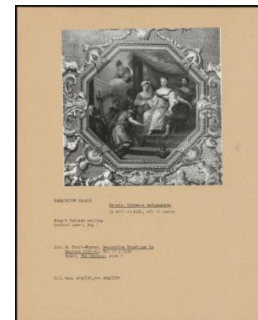
: PA-F00124-0009

**Title:** Hermes



: PA-F00124-0023

**Title:** Eurycleia Recognising Odysseus



: PA-F00124-0037

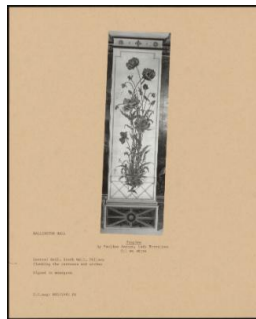
**Title:** detail: Odysseus before Arete



: PA-F00125-0029

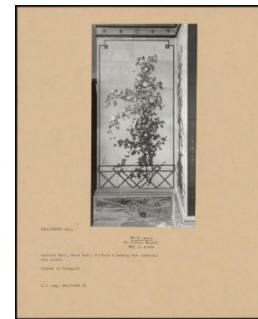
**Title:** The Apotheosis of James I: a Sketch for the Central Space in the Ceiling of the Banqueting House, Whitehall

**Provenance:** Viscount Hampden Glynde House (Now on loan to the National Gallery)



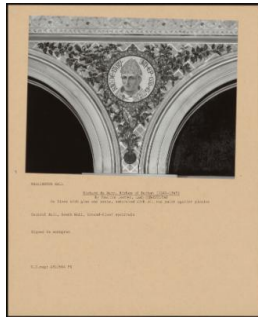
: PA-F00127-0033

**Title:** Poppies



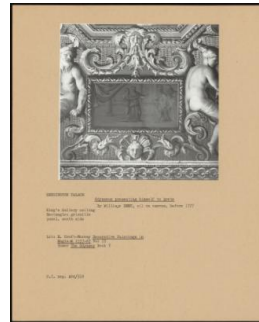
: PA-F00127-0047

**Title:** Wild Roses



**: PA-F00127-0073**

**Title:** Richard De Bury, Bishop of Durham (1281-1345)



**: PA-F00124-0011**

**Title:** Odysseus Presenting Himself to Arete



**: PA-F00124-0017**

**Title:** Odysseus Building His Ship



**: PA-F00124-0025**

**Title:** Odysseus Sacrificing at the Mount of Hades



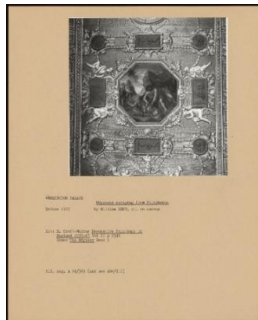
**: PA-F00124-0027**

**Title:** Telemachus and Nestor (Athene) Embarking for Pylos



**: PA-F00124-0033**

**Title:** Eurycleia and Penelope Welcoming Telemachus



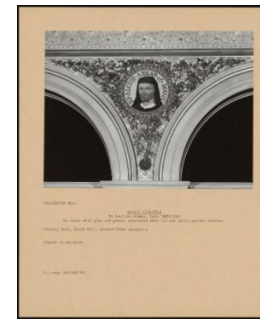
**: PA-F00124-0039**

**Title:** Odysseus Escaping From Polyphemus



**: PA-F00124-0043**

**Title:** Athene Appealing to Zeus



**: PA-F00127-0071**

**Title:** Alcuin (735-804)



**: PA-F00124-0021**  
**Title:** Odysseus Approaching Alcinous's Palace



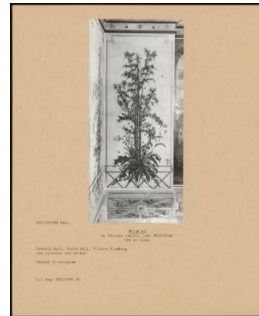
**: PA-F00127-0027**  
**Title:** Grace Darling Rescuing the Men of the 'forfarshire'



**: PA-F00127-0031**  
**Title:** Lilies



**: PA-F00127-0039**  
**Title:** Grasses



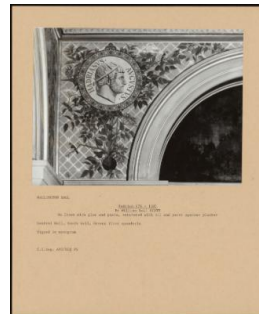
**: PA-F00127-0049**  
**Title:** Thistles



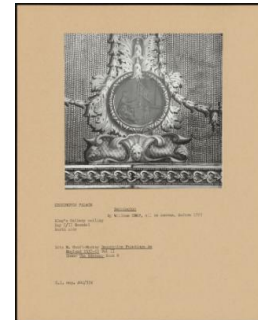
**: PA-F00127-0057**  
**Title:** Hollyhocks



**: PA-F00127-0065**  
**Title:** Plantain and Irise



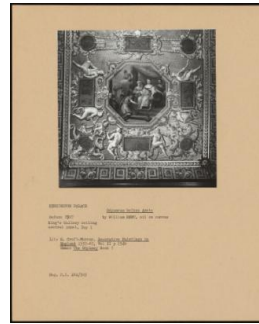
**: PA-F00127-0067**  
**Title:** Hadrian (76-138)



**: PA-F00124-0019**  
**Title:** Demodocus



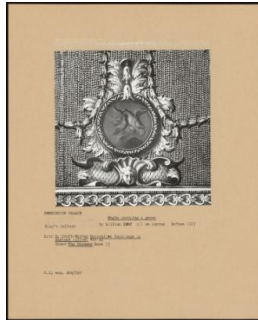
**: PA-F00124-0029**  
**Title:** Two Eagles Fighting



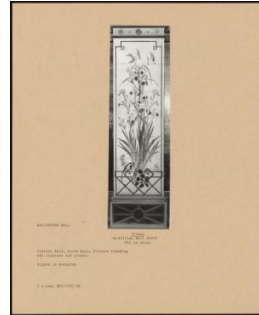
**: PA-F00124-0035**  
**Title:** Odysseus before Arete



**: PA-F00124-0099**  
**Title:** Athene Appearing to  
Odysseus and Telemachus at  
Eumaeus's Hut



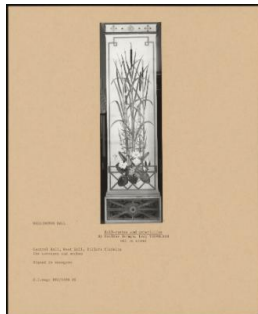
**: PA-F00124-0101**  
**Title:** Eagle Carrying a Goose  
**Provenance:** King's Gallery



**: PA-F00127-0035**  
**Title:** Irises



**: PA-F00127-0037**  
**Title:** Foxgloves



**: PA-F00127-0043**  
**Title:** Bulrushes and Water  
Lilies

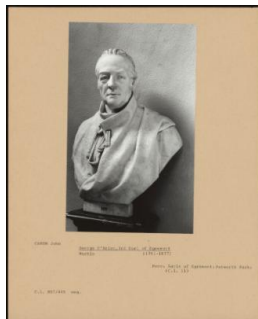


**: PA-F00127-0045**  
**Title:** White Poppies



**: PA-F00127-0053**  
**Title:** Lilies





**: PA-F00076-0021**

**Title:** George O'brien, 3rd Earl of Egremont (1751-1837)

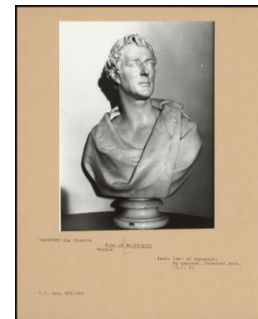
**Provenance:** Earls of Egremont; Petworth Park; (Courtauld Photographic Survey 11)



**: PA-F00076-0015**

**Title:** Adonis and the Boat

**Provenance:** Earls of Egremont, Petworth Park (Courtauld Photographic Survey 8)



**: PA-F00076-0005**

**Title:** Duke of Wellington

**Provenance:** Earl of Egremont; By descent. Petworth Park, (Courtauld Photographic Survey 2)



**: PA-F00076-0025**

**Title:** St Michael and Satan

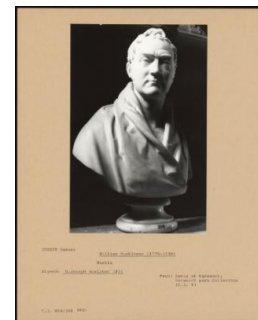
**Provenance:** Commissioned by the Earl of Egremont; By descent, Petworth House Collection (Courtauld Photographic Survey 13)



**: PA-F00076-0007**

**Title:** Arthur Young

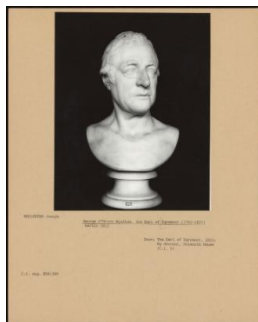
**Provenance:** Earls of Egremont; By descent Petworth Park (Courtauld Photographic Survey 3)



**: PA-F00076-0009**

**Title:** William Huskisson (1770-1830)

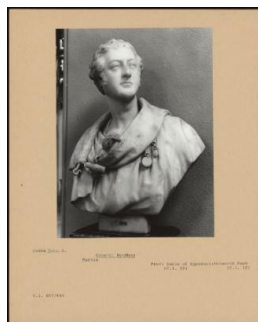
**Provenance:** Earls of Egremont; Petworth park Collection (Courtauld Photographic Survey 4)



**: PA-F00076-0011**

**Title:** George O'brien Wyndham, 3rd Earl of Egremont (1761-1837)

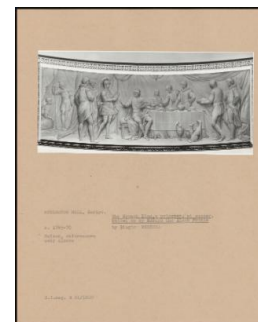
**Provenance:** The Earl of Egremont, 1815; By descent, Petworth House (Courtauld Photographic Survey 5)



**: PA-F00076-0019**

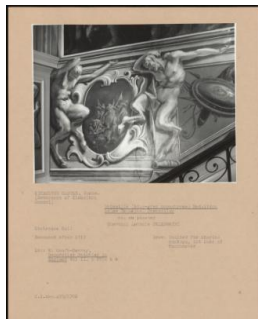
**Title:** General Wyndham

**Provenance:** Earls of Egremont; Petworth Park (Courtauld Photographic Survey 10)



**: PA-F00080-0003**

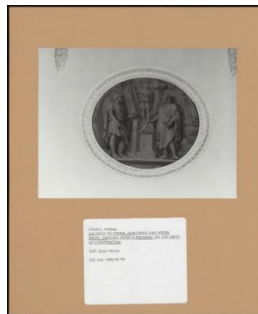
**Title:** The French King, a Prisoner, at Supper, Waited on by Edward the Black Prince  
**Provenance:** KEDLESTON HALL, Derbys



**: PA-F00081-0003**

**Title:** Grisaille (Blue-Grey Monochrome) Medallion Below Triumphal Procession

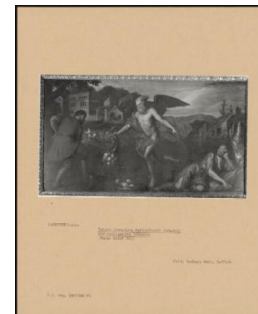
**Provenance:** KIMBOLTON CASTLE, Cambs. (Governors Of Kimbolton School), Painted For Charles Montagu, 1 Duke of Manchester



**: PA-F00091-0011**

**Title:** Sacrifice to Diana, Huntress and Moon Deity; Derived From a Roundel on the Arch of Constantine

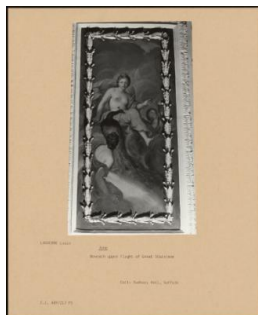
**Provenance:** Syon House



**: PA-F00092-0003**

**Title:** Saturn Rewarding Agriculture Industry and Castigating Idleness

**Provenance:** Sudbury Hall, Suffolk



**: PA-F00092-0005**

**Title:** Juno

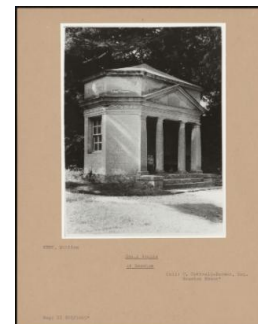
**Provenance:** Sudbury Hall, Suffolk



**: PA-F00094-0009**

**Title:** Fountain with Women Washing

**Provenance:** painted for John Parker; by family descent to the Earl of Morley; National Trust, Saltram



**: PA-F00096-0005**

**Title:** Small Temple at Rousham

**Provenance:** T. Cottrell-Dormer, Esq. Rousham House



**: PA-F00096-0009**

**Title:** Cascades at Rousham

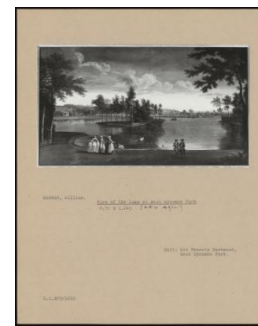
**Provenance:** Taken to Aynho by Elizabeth, daughter of sir Clement Cottrell-Dormer; m. William Cartwright, 1748; given back to Ursula Cottrell-Dormer by Sir Fairfax Cartwright, 1920; T. Cottrell- Dormer, Esq. Rousham House



**: PA-F00098-0005**

**Title:** View of the House From Across the Lake at West Wycombe Park

**Provenance:** Sir Francis Dashwood, West Wycombe Park.



**: PA-F00098-0009**

**Title:** View of the Lake at West Wycombe Park

**Provenance:** Sir Francis Dashwood, West Wycombe Park.



**: PA-F00081-0011**

**Title:** Fame Blowing Her Trumpet, and Minerva Pointing to a Portrait of Lord Manchester  
**Provenance:** KIMBOLTON CASTLE, Cambs. (Governors Of Kimbolton School), Painted For Charles Montagu, 1 Duke of Manchester



**: PA-F00081-0013**

**Title:** Triumphant Procession (detail)  
**Provenance:** KIMBOLTON CASTLE, Cambs. (Governors Of Kimbolton School), Painted For Charles Montagu, 1 Duke of Manchester



**: PA-F00081-0015**

**Title:** Venus and Cupid  
**Provenance:** KIMBOLTON CASTLE, Cambs. (Governors Of Kimbolton School), Painted For Charles Montagu, 1 Duke of Manchester



**: PA-F00081-0023**

**Title:** Allegorical Figure of 'plenty'  
**Provenance:** KIMBOLTON CASTLE, Cambs. (Governors Of Kimbolton School), Painted For Charles Montagu, 1 Duke of Manchester



**: PA-F00081-0027**

**Title:** The Transfiguration  
**Provenance:** KIMBOLTON CASTLE, Cambs. (Governors Of Kimbolton School), Painted For Charles Montagu, 1 Duke of Manchester



**: PA-F00081-0029**

**Title:** Musicians  
**Provenance:** KIMBOLTON CASTLE, Cambs. (Governors Of Kimbolton School), Painted For Charles Montagu, 1 Duke of Manchester



**: PA-F00091-0007**

**Title:** Grisaille Panel: Scenes Based on the Aldobrandini Marriage  
**Provenance:** Syon House



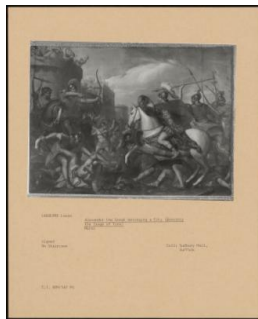
**: PA-F00091-0017**

**Title:** The Departure for the Chase: Derived From a Roundel on the Arch of Constantine  
**Provenance:** Syon House



**: PA-F00091-0021**

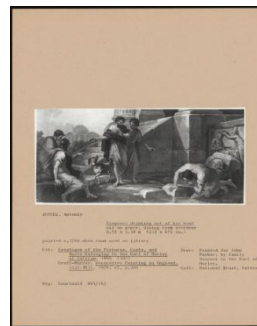
**Title:** Grisaille Panel: a Female Procession with Lachrymatories  
**Provenance:** Syon House



: PA-F00092-0007

**Title:** Alexander the Great Besieging a City (Possibly the Siege of Tyre)

**Provenance:** Sudbury Hall, Suffolk



: PA-F00094-0011

**Title:** Diogenes Drinking Out of His Hand

**Provenance:** painted for John Parker; by family descent to the Earl of Morley; National Trust, Saltram



: PA-F00098-0003

**Title:** West Wycombe Park  
**Provenance:** Sir Francis Dashwood, West Wycombe Park.



: PA-F00098-0013

**Title:** View of the House From Across the Lake at West Wycombe Park

**Provenance:** Sir Francis Dashwood, West Wycombe Park.



: PA-F00098-0015

**Title:** View of West Wycombe From the South-East

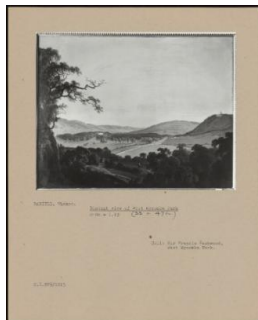
**Provenance:** Sir Francis Dashwood, West Wycombe Park.



: PA-F00098-0017

**Title:** View of the South Front of West Wycombe

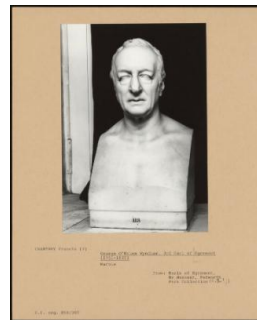
**Provenance:** Sir Francis Dashwood, West Wycombe Park.



: PA-F00098-0023

**Title:** Distant View of West Wycombe Park

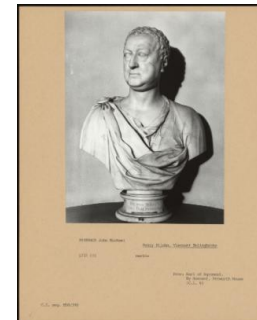
**Provenance:** Sir Francis Dashwood, West Wycombe Park.



: PA-F00076-0003

**Title:** George O'brien Wyndham, 3rd Earl of Egremont (1751-1837)

**Provenance:** Earls of Egremont, By descent, Petworth Park Collection (C. I.)



: PA-F00076-0013

**Title:** Henry St John, Viscount Bolingbroke

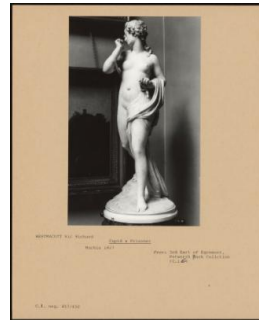
**Provenance:** Earl of Egremont. By descent, Petworth House (Courtauld Photographic Survey 6)





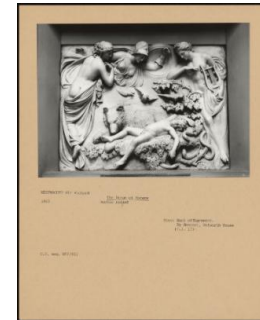
: PA-F00076-0027

**Title:** St. Michael and Satan  
**Provenance:** Commissioned 1819, by the 3 Earl of Egremont, Petworth Park (Courtauld Photographic Survey 14)



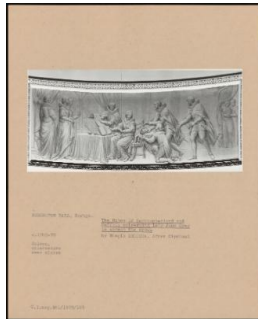
: PA-F00076-0031

**Title:** Cupid a Prisoner  
**Provenance:** 3 Earl of Egremont, Petworth Park Collection (Courtauld Photographic Survey 15a)



: PA-F00076-0033

**Title:** The Dream of Horace  
**Provenance:** Earl of Egremont. By descent, Petworth House (Courtauld Photographic Survey 17)



: PA-F00080-0009

**Title:** The Dukes of Northumberland and Suffolk Entreating Lady Jane Grey to Accept the Crown  
**Provenance:** KEDLESTON HALL, Derbys.



: PA-F00081-0009

**Title:** Crowning of the Roman Emperor (detail From Triumphal Procession)  
**Provenance:** KIMBOLTON CASTLE, Cambs. (Governors Of Kimbolton School), Painted For Charles Montagu, 1 Duke of Manchester



: PA-F00081-0019

**Title:** Triumphant Procession (detail)  
**Provenance:** KIMBOLTON CASTLE, Cambs. (Governors Of Kimbolton School), Painted For Charles Montagu, 1 Duke of Manchester



: PA-F00088-0007

**Title:** Duke of Marlborough at the Battle of Blenheim the Taking of Marshall Tallard and the Pushing of 4000 Men Into the Danube. 1704  
**Provenance:** National Trust Plas Newydd



: PA-F00088-0011

**Title:** Battle of Tangiers  
**Provenance:** National Trust Plas Newydd



: PA-F00091-0005

**Title:** Grisaille Panel: Female Figures, Including Muses  
**Provenance:** Syon House



**: PA-F00094-0005**

**Title:** Lady Fishing, with Peasants

**Provenance:** painted for John Parker; by family descent to the Earl of Morley; National Trust, Saltram



**: PA-F00094-0007**

**Title:** Ruined Temple with Fountain and Figures

**Provenance:** painted for John Parker; by family descent to the Earl of Morley; National Trust, Saltram



**: PA-F00096-0011**

**Title:** View of the Grand Salon at Rousham

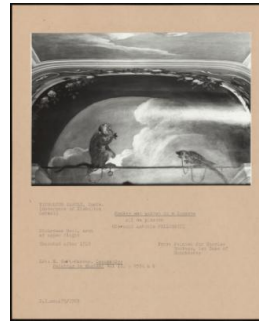
**Provenance:** T. Cottrell-Dormer, Esq. Rousham House



**: PA-F00081-0025**

**Title:** Gate of Millieu Capsi, Constantinople

**Provenance:** KIMBOLTON CASTLE, Cambs (Governors of Kimbolton School), Painted For Charles Montagu, 1 Duke of Manchester



**: PA-F00081-0031**

**Title:** Monkey and Parrot in a Lunette

**Provenance:** KIMBOLTON CASTLE, Cambs. (Governors Of Kimbolton School), Painted For Charles Montagu, 1 Duke of Manchester



**: PA-F00081-0033**

**Title:** Trophy of Weapons (Colour)

**Provenance:** KIMBOLTON CASTLE, Cambs. (Governors Of Kimbolton School), Painted For Charles Montagu, 1 Duke of Manchester



**: PA-F00088-0013**

**Title:** Louis XIV with the French Army, Battle of Ramillies

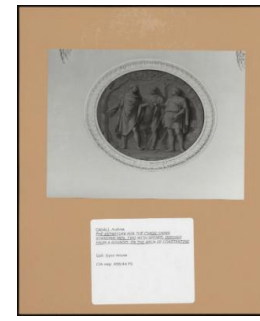
**Provenance:** National Trust Plas Newydd



**: PA-F00088-0019**

**Title:** Battle of Tangiers (Mapquest) the Duke of Marlborough and Prince Eugene of Savoy Entering the Enemy's Intrenchments

**Provenance:** National Trust Plas Newydd



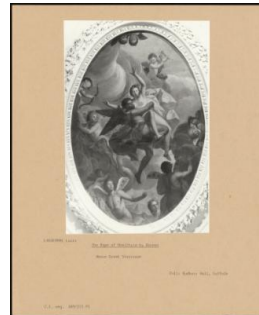
**: PA-F00091-0013**

**Title:** The Departure for the Chase: Three Standing Men, Two with Spears; Derived From a Roundel on the Arch of Constantine

**Provenance:** Syon House



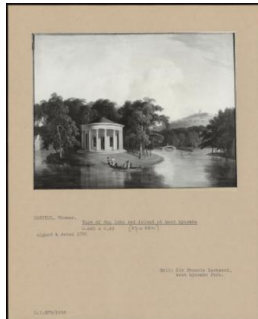
**: PA-F00091-0015**  
**Title:** Grisaille Panel: the Death of Meleager  
**Provenance:** Syon House



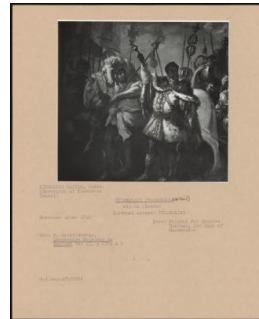
**: PA-F00092-0019**  
**Title:** The Rape of Orithyia by Boreas  
**Provenance:** Sudbury Hall, Suffolk



**: PA-F00094-0003**  
**Title:** Women Bathing in Ruined Temple  
**Provenance:** painted for John Parker; by Family descent to the Earl of Morley; National Trust, Saltram



**: PA-F00098-0021**  
**Title:** View of the Lake and Island at West Wycombe  
**Provenance:** Sir Francis Dashwood, West Wycombe Park.



**: PA-F00081-0005**  
**Title:** Triumphant Procession (detail)  
**Provenance:** KIMBOLTON CASTLE, Cambs. (Governors Of Kimbolton School), Painted For Charles Montagu, 1 Duke of Manchester



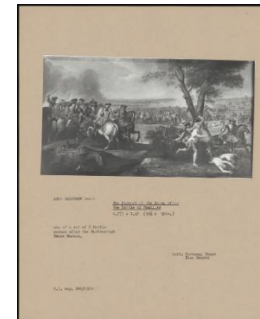
**: PA-F00081-0007**  
**Title:** Triumphant Procession of a Roman Emperor  
**Provenance:** KIMBOLTON CASTLE (Cambs.) (Governors Of Kimbolton School), Painted For Charles Montagu, 1 Duke of Manchester



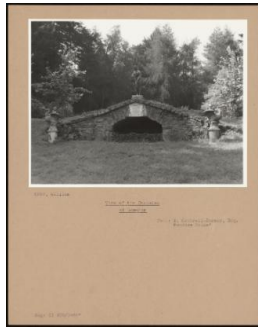
**: PA-F00081-0017**  
**Title:** Triumphant Procession (detail)  
**Provenance:** KIMBOLTON CASTLE, Cambs. (Governors Of Kimbolton School), Painted For Charles Montagu, 1 Duke of Manchester



**: PA-F00088-0005**  
**Title:** Three Scenes From the Battle of Blenheim  
**Provenance:** National Trust Plas Newydd



**: PA-F00088-0009**  
**Title:** The Pursuit of the Enemy after the Battle of Ramillies  
**Provenance:** National Trust Plas Newydd



**: PA-F00096-0007**

**Title:** View of the Cascades at Rousham

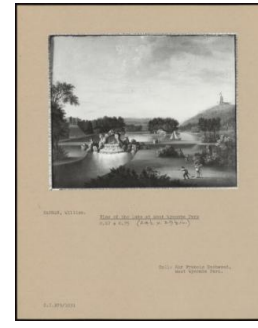
**Provenance:** T. Cottrell-Dormer, Esq. Rousham House



**: PA-F00096-0013**

**Title:** Sketch of Rousham

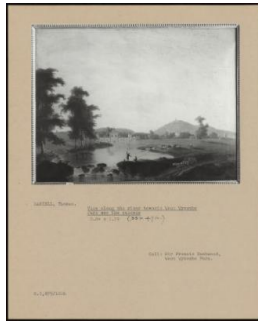
**Provenance:** T. Cottrell-Dormer, Esq., Rousham House



**: PA-F00098-0011**

**Title:** View of the Lake at West Wycombe Park

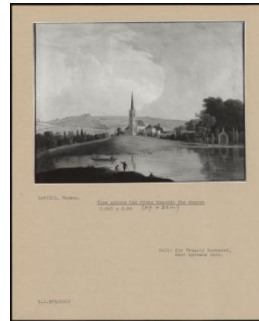
**Provenance:** Sir Francis Dashwood, West Wycombe Park.



**: PA-F00098-0019**

**Title:** View Along the River Towards West Wycombe Park and the Cascade

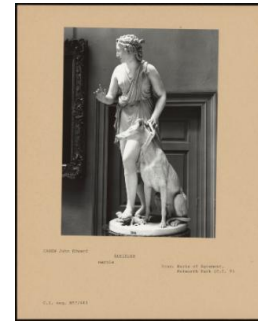
**Provenance:** Sir Francis Dashwood, West Wycombe Park.



**: PA-F00098-0025**

**Title:** View Across the River Towards the Church

**Provenance:** Sir Francis Dashwood, West Wycombe Park.



**: PA-F00076-0017**

**Title:** Arethusa

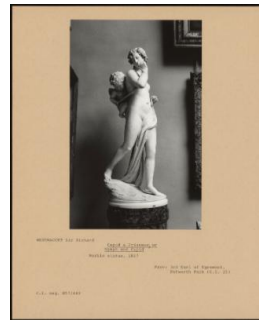
**Provenance:** Earls of Egremont, Petworth Park (Courtauld Photographic Survey 9)



**: PA-F00076-0023**

**Title:** Pastoral Apollo

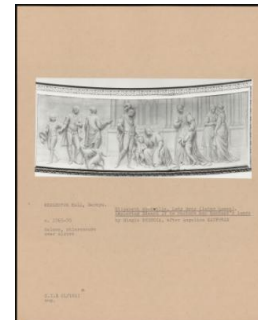
**Provenance:** Commissioned by the 3 Earl of Egremont in 1813; Petworth Park Collection (Courtauld Photographic Survey 12)



**: PA-F00076-0029**

**Title:** Cupid a Prisoner, Or Nymph and Cupid

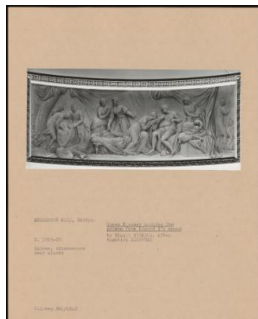
**Provenance:** 3 Earl of Egremont, Petworth Park (Courtauld Photographic Survey 15)



**: PA-F00080-0005**

**Title:** Elizabeth Woodville, Lady Grey (Later Queen), Imploring Edward IV to Restore Her Husband's Lands  
**Provenance:** KEDLESTON HALL, Derbys

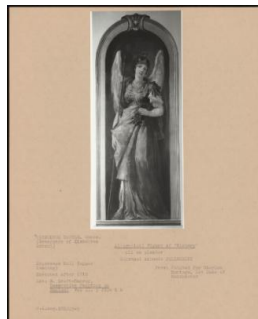




**: PA-F00080-0007**

**Title:** Queen Eleanor Sucking the Poison From Edward I's Wound

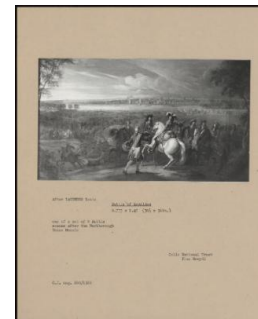
**Provenance:** KEDLESTON HALL, Derbys.



**: PA-F00081-0021**

**Title:** Allegorical Figure of 'victory'

**Provenance:** KIMBOLTON CASTLE, Cambs. (Governors Of Kimbolton School), Painted For Charles Montagu, 1 Duke of Manchester



**: PA-F00088-0015**

**Title:** Battle of Ramillies

**Provenance:** National Trust Plas Newydd



**: PA-F00088-0017**

**Title:** Duke of Marlborough at the Battle of Blenheim 1704

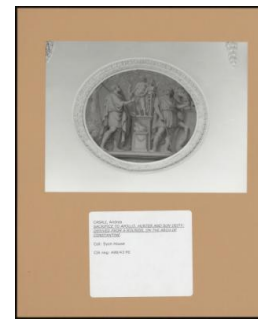
**Provenance:** National Trust Plas Newydd



**: PA-F00091-0003**

**Title:** Interior, General View, Looking South

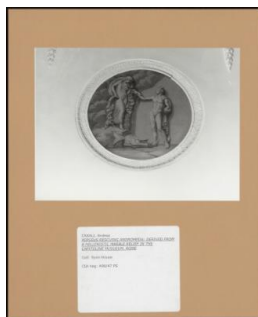
**Provenance:** Syon House



**: PA-F00091-0009**

**Title:** Sacrifice to Apollo, Hunter and Sun Deity; Derived From a Roundel on the Arch of Constantine

**Provenance:** Syon House



**: PA-F00091-0019**

**Title:** Perseus Rescuing Andromeda; Derived From a Hellenistic Marble Relief in the Capitoline Museum, Rome

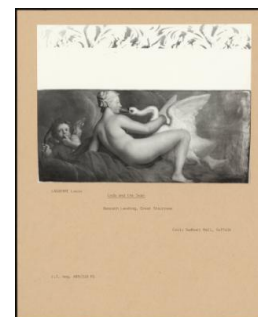
**Provenance:** Syon House



**: PA-F00092-0009**

**Title:** Putti with Torches

**Provenance:** Sudbury Hall, Suffolk



**: PA-F00092-0011**

**Title:** Leda and the Swan

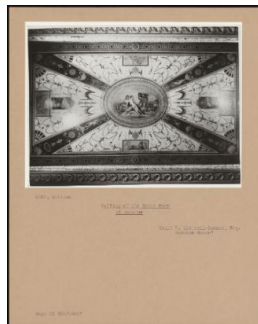
**Provenance:** Sudbury Hall, Suffolk



: PA-F00092-0021

**Title:** The Four Seasons

**Provenance:** Sudbury Hall,  
Suffolk



: PA-F00096-0003

**Title:** Ceiling of the Music  
Room at Rousham

**Provenance:** T. Cottrell-  
Dormer, Esq. Rousham House



: PA-F00098-0007

**Title:** View of the Lake at West  
Wycombe Park

**Provenance:** Sir Francis  
Dashwood, West Wycombe  
Park.



: PA-F00098-0079

**Title:** Bacchus Crowning  
Ariadne; Young Bacchanals at  
Play



: PA-F00124-0007

**Title:** Athene Appearing to  
Telemachus



: PA-F00124-0015

**Title:** Penelope Asleep on Her  
Couch



: PA-F00124-0041

**Title:** detail: Odysseus  
Escaping From Polyphemus



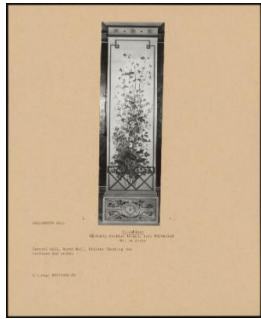
: PA-F00124-0047

**Title:** Odysseus and the Sirens



: PA-F00124-0103

**Title:** Phineas



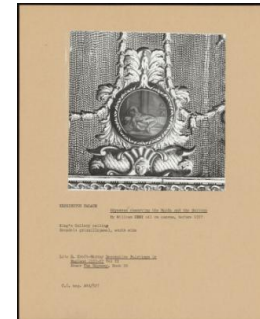
: PA-F00127-0051

Title: Columbines



: PA-F00124-0013

Title: Athene and Odysseus with Bow



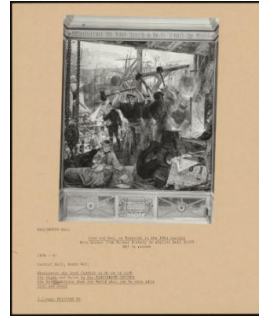
: PA-F00124-0031

Title: Odysseus Observing the Maids and the Suitors



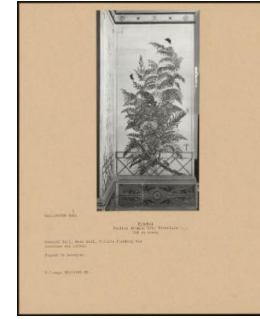
: PA-F00124-0045

Title: detail: Athene Appealing to Zeus



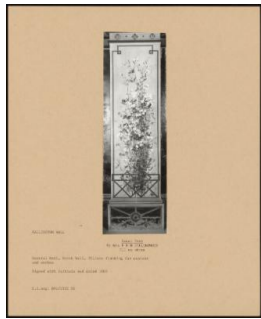
: PA-F00127-0029

Title: Iron and Coal on Tyneside in the 19th Century



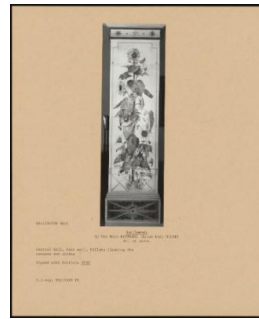
: PA-F00127-0041

Title: Bracken



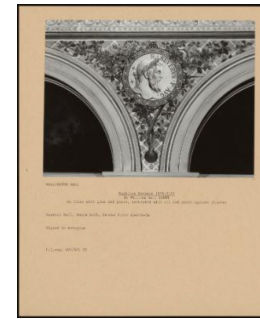
: PA-F00127-0055

Title: Sweet Peas



: PA-F00127-0061

Title: Sunflowers



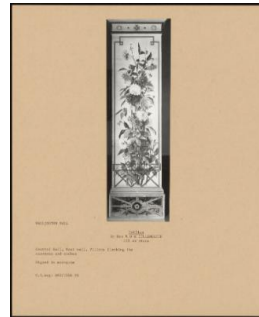
: PA-F00127-0069

Title: Septimius Severus (146-211)



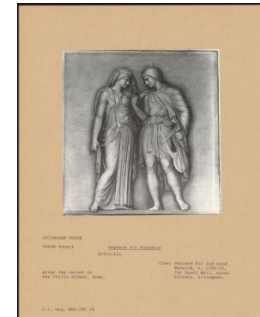
: PA-F00127-0059

**Title:** Wild Flowers



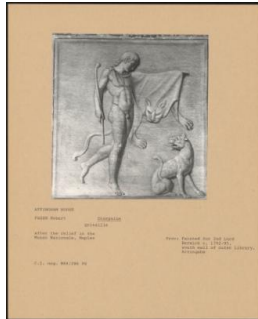
: PA-F00127-0063

**Title:** Dahlias



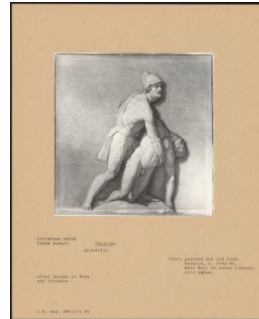
: PA-F00060-0003

**Title:** Orpheus And Eurydice  
**Provenance:** Painted for 2nd Lord Berwick, ca. 1792-95, for South wall, outer Library, Attingham.



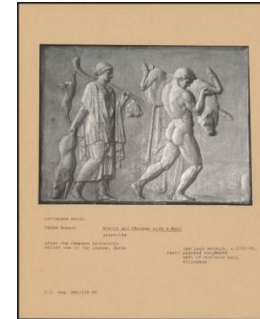
: PA-F00060-0005

**Title:** Dionysius  
**Provenance:** Painted for 2nd Lord Berwick ca. 1792-95, south wall of outer Library, Attingham



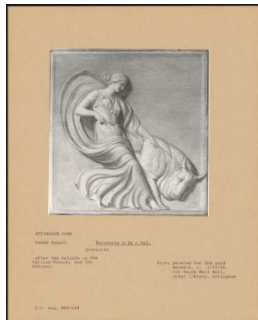
: PA-F00060-0007

**Title:** Pasquino  
**Provenance:** painted for 2nd Lord Berwick, ca. 1792-95, West Wall of outer Library, Attingham.



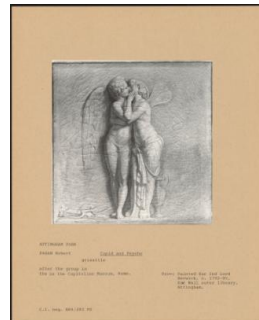
: PA-F00060-0009

**Title:** Winter And Theseus With A Bull  
**Provenance:** painted for North wall of entrance hall, Attingham



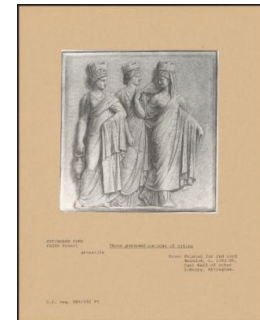
: PA-F00060-0011

**Title:** Bacchante With A Bull  
**Provenance:** painted for 2nd Lord Berwick, ca. 1792-95, for South Wall Wall, outer library, Attingham



: PA-F00060-0013

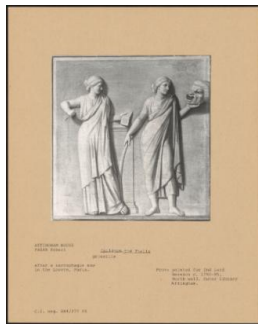
**Title:** Cupid And Psyche  
**Provenance:** Painted for 2nd Lord Berwick, ca. 1792-95, East Wall outer library, Attingham.



: PA-F00060-0015

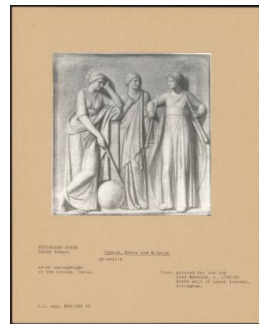
**Title:** Three Personifications Of Cities  
**Provenance:** Painted for 2nd Lord Berwick, ca. 1792-95 , East Wall of outer Library, Attingham.





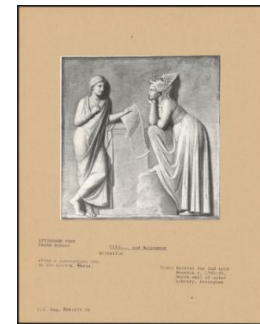
**: PA-F00060-0017**

**Title:** Calliope And Thalia  
**Provenance:** painted for 2nd Lord Berwick ca. 1792-95, North wall, Outer Library Attingham.



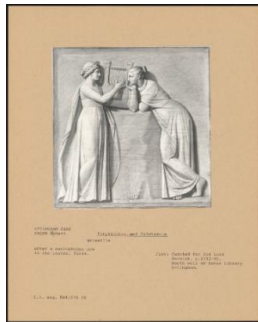
**: PA-F00060-0019**

**Title:** Urania, Erato And Euterpe  
**Provenance:** painted for the 2nd Lord Berwick, ca. 1792-95 North wall of outer library, Attingham.



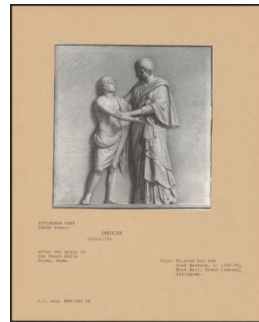
**: PA-F00060-0021**

**Title:** Clio And Melpomene  
**Provenance:** Painted for 2nd Lord Berwick ca. 1792-95, North wall of outer Library, Attingham



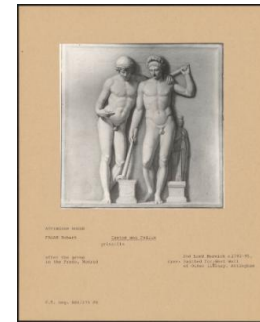
**: PA-F00060-0023**

**Title:** Terpsichore And Polyhymnia  
**Provenance:** Painted for 2nd Lord berwick, ca. 1792-95, North wall of Outer Library Attingham.



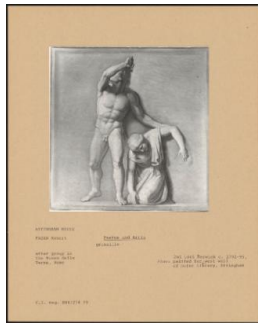
**: PA-F00060-0025**

**Title:** Papius  
**Provenance:** Painted for 2nd Lord Berwick, ca. 1792-95, East Wall, Outer Library Attingham.



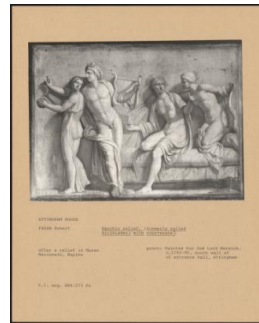
**: PA-F00060-0027**

**Title:** Castor And Pollux  
**Provenance:** Painted for West Wall of Outer library, Attingham



**: PA-F00060-0029**

**Title:** Paetus And Arria  
**Provenance:** painted for 2nd Lord Berwick ca. 1792-95, west wall of outer Library, Attingham



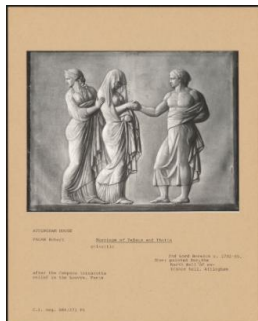
**: PA-F00060-0031**

**Title:** Bacchic Relief, (Formerly Called Alcibiades) With Courtesans)  
**Provenance:** Provv: Painted for 2nd Lord Berwick, ca. 1792-95, south wall of of entrance hall, Attingham



**: PA-F00060-0033**

**Title:** Bacchus, Ampelos, Silenos And A Maenad  
**Provenance:** painted for South wall of Entrance Hall, Attingham



: PA-F00060-0035

**Title:** Marriage Of Peleus And Thetis

**Provenance:** painted for the North Wall of entrance hall, Attingham



: PA-F00061-0003

**Title:** Glorification Of The Duke Of Marlborough

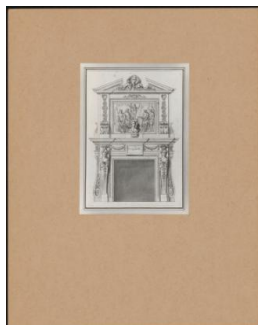
**Provenance:** Painted for Sarah, 1st Duke of Marlborough



: PA-F00063-0019

**Title:** East Wall: Julius Caesar Sacrificing Before Going To The Senate

**Provenance:** Painted for William Cavendish, 1st Duke of Devonshire



: PA-F00069-0005

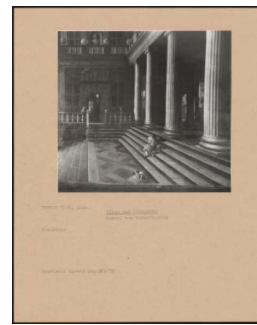
**Title:** PA-F00069-0005

**Provenance:** Courtauld



: PA-F00071-0003

**Title:** View Down A Corridor



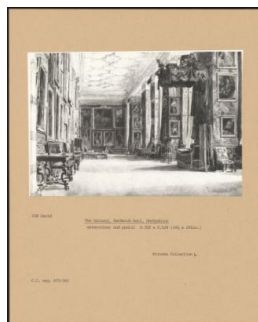
: PA-F00071-0005

**Title:** Steps And Colonnade



: PA-F00071-0007

**Title:** An Upright Landscape With A Farm Building In Brazil



: PA-F00073-0041

**Title:** The Gallery, Hardwick Hall, Derbyshire

**Provenance:** Private Collection L