

# Basic Report



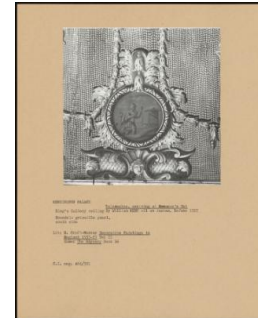
: PA-F00127-0075

**Title:** John Duns Scotus (ca. 1265-1307)



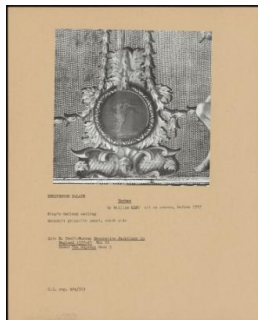
: PA-F00124-0003

**Title:** Odysseus Recognised by His Dog



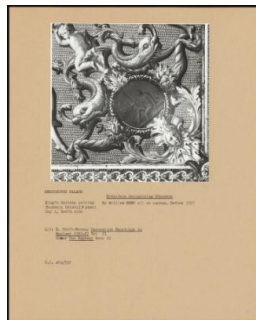
: PA-F00124-0005

**Title:** Telemachus, Arriving at Eumaeus's Hut



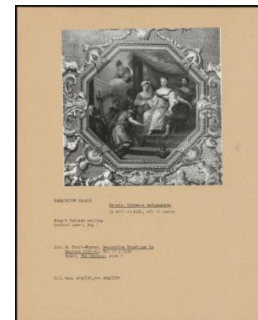
: PA-F00124-0009

**Title:** Hermes



: PA-F00124-0023

**Title:** Eurycleia Recognising Odysseus



: PA-F00124-0037

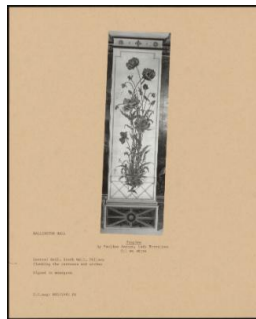
**Title:** detail: Odysseus before Arete



: PA-F00125-0029

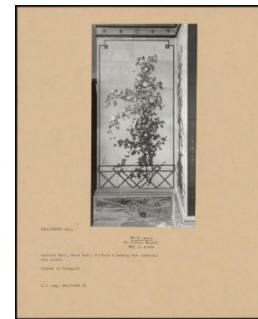
**Title:** The Apotheosis of James I: a Sketch for the Central Space in the Ceiling of the Banqueting House, Whitehall

**Provenance:** Viscount Hampden Glynde House (Now on loan to the National Gallery)



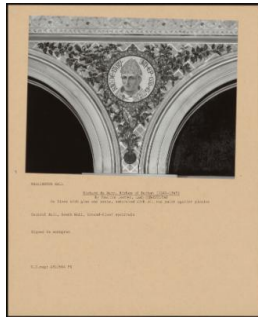
: PA-F00127-0033

**Title:** Poppies



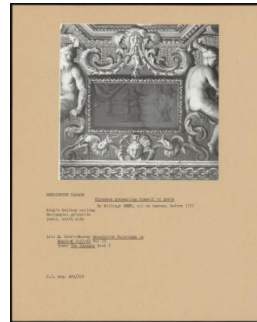
: PA-F00127-0047

**Title:** Wild Roses



**: PA-F00127-0073**

**Title:** Richard De Bury, Bishop of Durham (1281-1345)



**: PA-F00124-0011**

**Title:** Odysseus Presenting Himself to Arete



**: PA-F00124-0017**

**Title:** Odysseus Building His Ship



**: PA-F00124-0025**

**Title:** Odysseus Sacrificing at the Mount of Hades



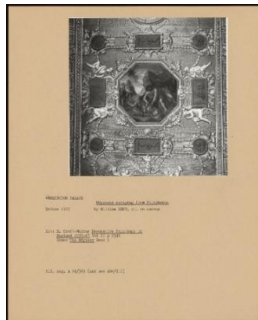
**: PA-F00124-0027**

**Title:** Telemachus and Nestor (Athene) Embarking for Pylos



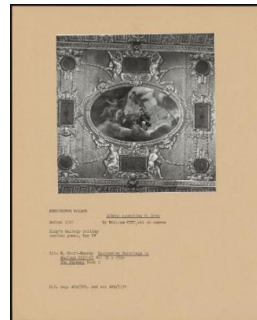
**: PA-F00124-0033**

**Title:** Eurycleia and Penelope Welcoming Telemachus



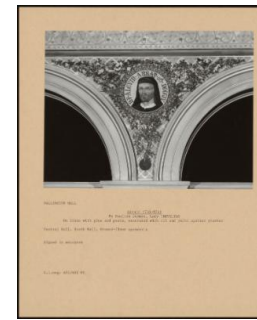
**: PA-F00124-0039**

**Title:** Odysseus Escaping From Polyphemus



**: PA-F00124-0043**

**Title:** Athene Appealing to Zeus



**: PA-F00127-0071**

**Title:** Alcuin (735-804)



**: PA-F00124-0021**  
**Title:** Odysseus Approaching Alcinous's Palace



**: PA-F00127-0027**  
**Title:** Grace Darling Rescuing the Men of the 'forfarshire'



**: PA-F00127-0031**  
**Title:** Lilies



**: PA-F00127-0039**  
**Title:** Grasses



**: PA-F00127-0049**  
**Title:** Thistles



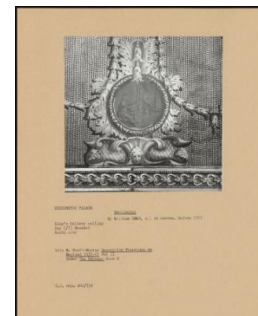
**: PA-F00127-0057**  
**Title:** Hollyhocks



**: PA-F00127-0065**  
**Title:** Plantain and Irise



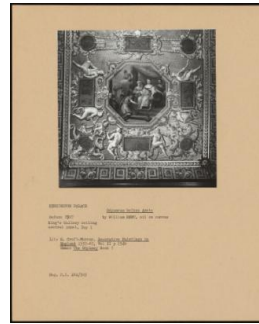
**: PA-F00127-0067**  
**Title:** Hadrian (76-138)



**: PA-F00124-0019**  
**Title:** Demodocus



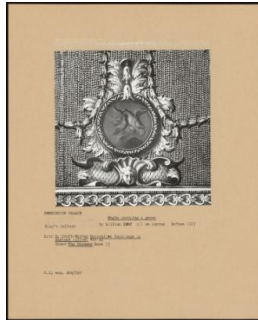
**: PA-F00124-0029**  
**Title:** Two Eagles Fighting



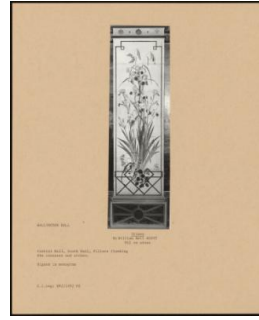
**: PA-F00124-0035**  
**Title:** Odysseus before Arete



**: PA-F00124-0099**  
**Title:** Athene Appearing to  
Odysseus and Telemachus at  
Eumaeus's Hut



**: PA-F00124-0101**  
**Title:** Eagle Carrying a Goose  
**Provenance:** King's Gallery



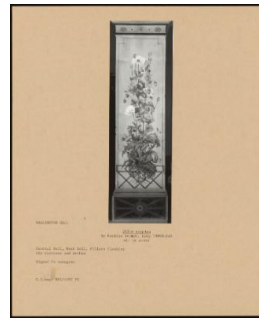
**: PA-F00127-0035**  
**Title:** Irises



**: PA-F00127-0037**  
**Title:** Foxgloves



**: PA-F00127-0043**  
**Title:** Bulrushes and Water  
Lilies

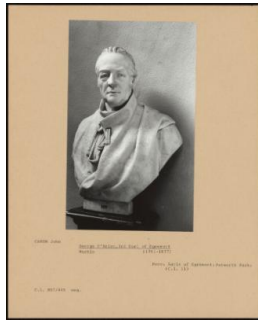


**: PA-F00127-0045**  
**Title:** White Poppies



**: PA-F00127-0053**  
**Title:** Lilies

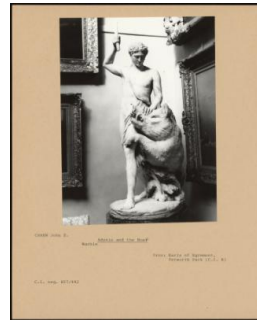




**: PA-F00076-0021**

**Title:** George O'brien, 3rd Earl of Egremont (1751-1837)

**Provenance:** Earls of Egremont; Petworth Park; (Courtauld Photographic Survey 11)



**: PA-F00076-0015**

**Title:** Adonis and the Boat

**Provenance:** Earls of Egremont, Petworth Park (Courtauld Photographic Survey 8)



**: PA-F00076-0005**

**Title:** Duke of Wellington

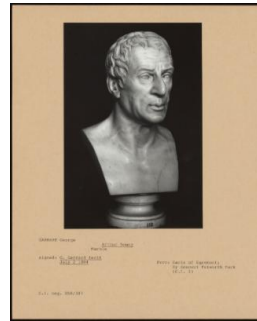
**Provenance:** Earl of Egremont; By descent. Petworth Park, (Courtauld Photographic Survey 2)



**: PA-F00076-0025**

**Title:** St Michael and Satan

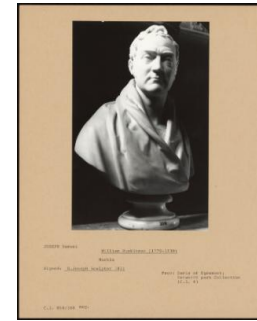
**Provenance:** Commissioned by the Earl of Egremont; By descent, Petworth House Collection (Courtauld Photographic Survey 13)



**: PA-F00076-0007**

**Title:** Arthur Young

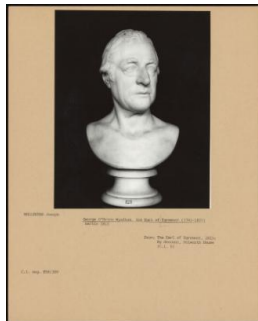
**Provenance:** Earls of Egremont; By descent Petworth Park (Courtauld Photographic Survey 3)



**: PA-F00076-0009**

**Title:** William Huskisson (1770-1830)

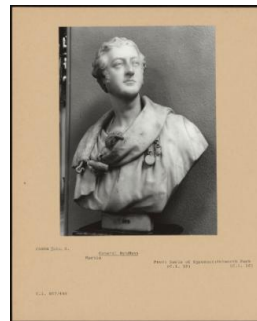
**Provenance:** Earls of Egremont; Petworth park Collection (Courtauld Photographic Survey 4)



**: PA-F00076-0011**

**Title:** George O'brien Wyndham, 3rd Earl of Egremont (1761-1837)

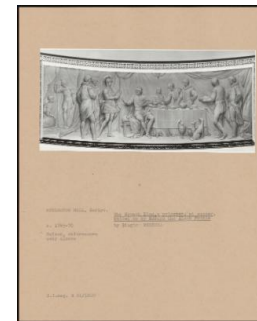
**Provenance:** The Earl of Egremont, 1815; By descent, Petworth House (Courtauld Photographic Survey 5)



**: PA-F00076-0019**

**Title:** General Wyndham

**Provenance:** Earls of Egremont; Petworth Park (Courtauld Photographic Survey 10)



**: PA-F00080-0003**

**Title:** The French King, a Prisoner, at Supper, Waited on by Edward the Black Prince

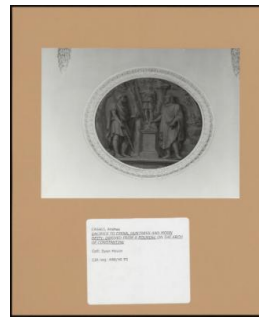
**Provenance:** KEDLESTON HALL, Derbys



**: PA-F00081-0003**

**Title:** Grisaille (Blue-Grey Monochrome) Medallion Below Triumphal Procession

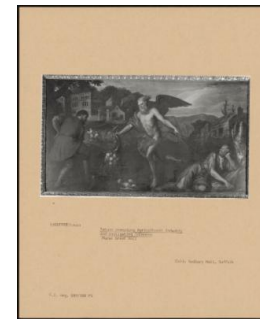
**Provenance:** KIMBOLTON CASTLE, Cambs. (Governors Of Kimbolton School), Painted For Charles Montagu, 1 Duke of Manchester



**: PA-F00091-0011**

**Title:** Sacrifice to Diana, Huntress and Moon Deity; Derived From a Roundel on the Arch of Constantine

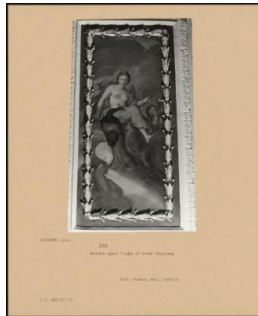
**Provenance:** Syon House



**: PA-F00092-0003**

**Title:** Saturn Rewarding Agriculture Industry and Castigating Idleness

**Provenance:** Sudbury Hall, Suffolk



**: PA-F00092-0005**

**Title:** Juno

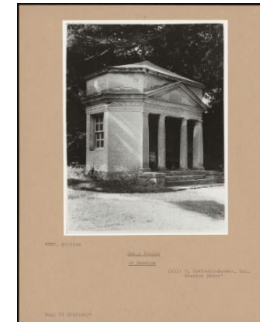
**Provenance:** Sudbury Hall, Suffolk



**: PA-F00094-0009**

**Title:** Fountain with Women Washing

**Provenance:** painted for John Parker; by family descent to the Earl of Morley; National Trust, Saltram



**: PA-F00096-0005**

**Title:** Small Temple at Rousham

**Provenance:** T. Cottrell-Dormer, Esq. Rousham House



**: PA-F00096-0009**

**Title:** Cascades at Rousham

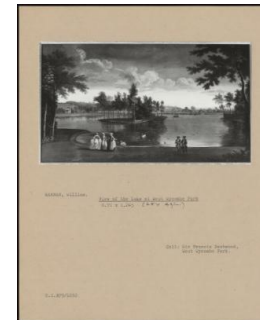
**Provenance:** Taken to Aynho by Elizabeth, daughter of sir Clement Cottrell-Dormer; m. William Cartwright, 1748; given back to Ursula Cottrell-Dormer by Sir Fairfax Cartwright, 1920; T. Cottrell- Dormer, Esq. Rousham House



**: PA-F00098-0005**

**Title:** View of the House From Across the Lake at West Wycombe Park

**Provenance:** Sir Francis Dashwood, West Wycombe Park.



**: PA-F00098-0009**

**Title:** View of the Lake at West Wycombe Park

**Provenance:** Sir Francis Dashwood, West Wycombe Park.



**: PA-F00109-0061**

**Title:** An Allegory of the Union of England and Scotland  
**Provenance:** Viscount Chandos deceased. sale Sotheby's, 26 March 1975 (60)



**: PA-F00081-0011**

**Title:** Fame Blowing Her Trumpet, and Minerva Pointing to a Portrait of Lord Manchester  
**Provenance:** KIMBOLTON CASTLE, Cambs. (Governors Of Kimbolton School), Painted For Charles Montagu, 1 Duke of Manchester



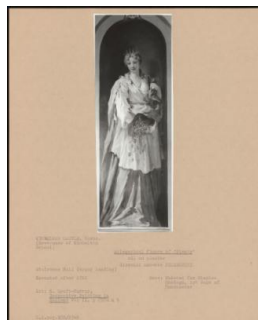
**: PA-F00081-0013**

**Title:** Triumphant Procession (detail)  
**Provenance:** KIMBOLTON CASTLE, Cambs. (Governors Of Kimbolton School), Painted For Charles Montagu, 1 Duke of Manchester



**: PA-F00081-0015**

**Title:** Venus and Cupid  
**Provenance:** KIMBOLTON CASTLE, Cambs. (Governors Of Kimbolton School), Painted For Charles Montagu, 1 Duke of Manchester



**: PA-F00081-0023**

**Title:** Allegorical Figure of 'plenty'  
**Provenance:** KIMBOLTON CASTLE, Cambs. (Governors Of Kimbolton School), Painted For Charles Montagu, 1 Duke of Manchester



**: PA-F00081-0027**

**Title:** The Transfiguration  
**Provenance:** KIMBOLTON CASTLE, Cambs. (Governors Of Kimbolton School), Painted For Charles Montagu, 1 Duke of Manchester



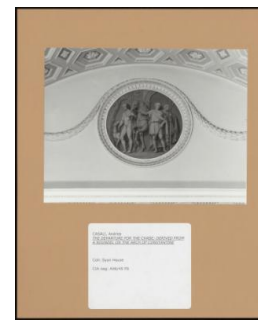
**: PA-F00081-0029**

**Title:** Musicians  
**Provenance:** KIMBOLTON CASTLE, Cambs. (Governors Of Kimbolton School), Painted For Charles Montagu, 1 Duke of Manchester



**: PA-F00091-0007**

**Title:** Grisaille Panel: Scenes Based on the Aldobrandini Marriage  
**Provenance:** Syon House



**: PA-F00091-0017**

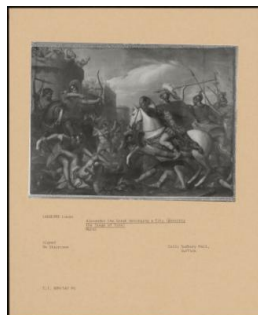
**Title:** The Departure for the Chase: Derived From a Roundel on the Arch of Constantine  
**Provenance:** Syon House



**: PA-F00091-0021**

**Title:** Grisaille Panel: a Female Procession with Lachrymatories

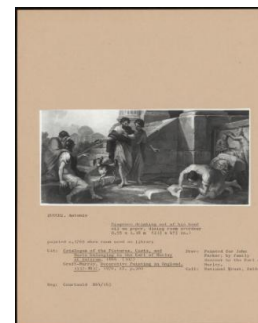
**Provenance:** Syon House



**: PA-F00092-0007**

**Title:** Alexander the Great Besieging a City (Possibly the Siege of Tyre)

**Provenance:** Sudbury Hall, Suffolk



**: PA-F00094-0011**

**Title:** Diogenes Drinking Out of His Hand

**Provenance:** painted for John Parker; by family descent to the Earl of Morley; National Trust, Saltram



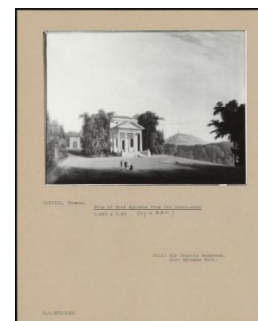
**: PA-F00098-0003**

**Title:** West Wycombe Park  
**Provenance:** Sir Francis Dashwood, West Wycombe Park.



**: PA-F00098-0013**

**Title:** View of the House From Across the Lake at West Wycombe Park  
**Provenance:** Sir Francis Dashwood, West Wycombe Park.



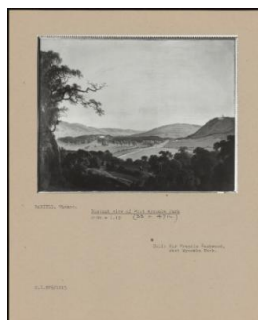
**: PA-F00098-0015**

**Title:** View of West Wycombe From the South-East  
**Provenance:** Sir Francis Dashwood, West Wycombe Park.



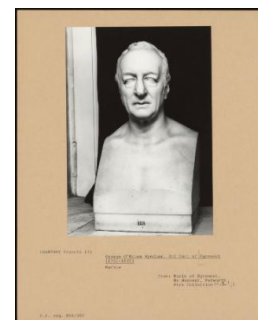
**: PA-F00098-0017**

**Title:** View of the South Front of West Wycombe  
**Provenance:** Sir Francis Dashwood, West Wycombe Park.



**: PA-F00098-0023**

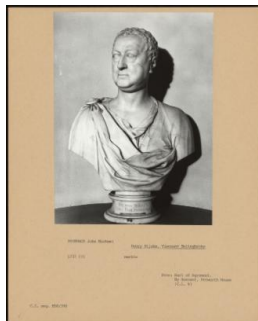
**Title:** Distant View of West Wycombe Park  
**Provenance:** Sir Francis Dashwood, West Wycombe Park.



**: PA-F00076-0003**

**Title:** George O'brien Wyndham, 3rd Earl of Egremont (1751-1837)  
**Provenance:** Earls of Egremont, By descent, Petworth Park Collection (C. I.)





**: PA-F00076-0013**

**Title:** Henry St John, Viscount Bolingbroke

**Provenance:** Earl of Egremont. By descent, Petworth House (Courtauld Photographic Survey 6)



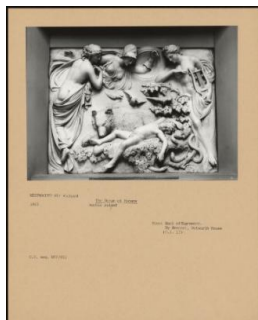
**: PA-F00076-0027**

**Title:** St. Michael and Satan  
**Provenance:** Commissioned 1819, by the 3 Earl of Egremont, Petworth Park (Courtauld Photographic Survey 14)



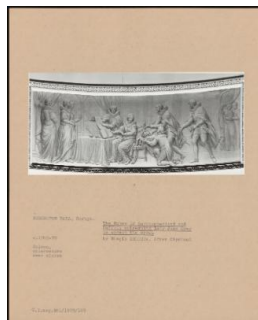
**: PA-F00076-0031**

**Title:** Cupid a Prisoner  
**Provenance:** 3 Earl of Egremont, Petworth Park Collection (Courtauld Photographic Survey 15a)



**: PA-F00076-0033**

**Title:** The Dream of Horace  
**Provenance:** Earl of Egremont. By descent, Petworth House (Courtauld Photographic Survey 17)



**: PA-F00080-0009**

**Title:** The Dukes of Northumberland and Suffolk Entreating Lady Jane Grey to Accept the Crown  
**Provenance:** KEDLESTON HALL, Derbys.



**: PA-F00081-0009**

**Title:** Crowning of the Roman Emperor (detail From Triumphal Procession)  
**Provenance:** KIMBOLTON CASTLE, Cambs. (Governors Of Kimbolton School), Painted For Charles Montagu, 1 Duke of Manchester



**: PA-F00081-0019**

**Title:** Triumphant Procession (detail)  
**Provenance:** KIMBOLTON CASTLE, Cambs. (Governors Of Kimbolton School), Painted For Charles Montagu, 1 Duke of Manchester



**: PA-F00088-0007**

**Title:** Duke of Marlborough at the Battle of Blenheim the Taking of Marshall Tallard and the Pushing of 4000 Men Into the Danube. 1704  
**Provenance:** National Trust Plas Newydd



**: PA-F00088-0011**

**Title:** Battle of Tangiers  
**Provenance:** National Trust Plas Newydd



**: PA-F00091-0005**

**Title:** Grisaille Panel: Female Figures, Including Muses

**Provenance:** Syon House



**: PA-F00094-0005**

**Title:** Lady Fishing, with Peasants

**Provenance:** painted for John Parker; by family descent to the Earl of Morley; National Trust, Saltram



**: PA-F00094-0007**

**Title:** Ruined Temple with Fountain and Figures

**Provenance:** painted for John Parker; by family descent to the Earl of Morley; National Trust, Saltram



**: PA-F00096-0011**

**Title:** View of the Grand Salon at Rousham

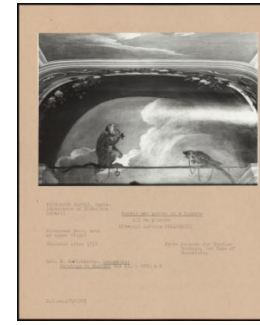
**Provenance:** T. Cottrell-Dormer, Esq. Rousham House



**: PA-F00081-0025**

**Title:** Gate of Milieu Capsi, Constantinople

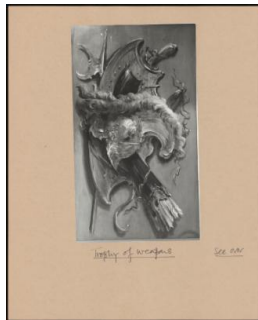
**Provenance:** KIMBOLTON CASTLE, Cambs (Governors of Kimbolton School), Painted For Charles Montagu, 1 Duke of Manchester



**: PA-F00081-0031**

**Title:** Monkey and Parrot in a Lunette

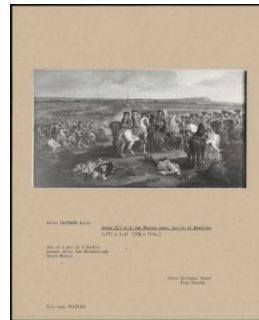
**Provenance:** KIMBOLTON CASTLE, Cambs. (Governors Of Kimbolton School), Painted For Charles Montagu, 1 Duke of Manchester



**: PA-F00081-0033**

**Title:** Trophy of Weapons (Colour)

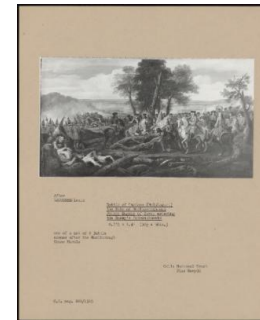
**Provenance:** KIMBOLTON CASTLE, Cambs. (Governors Of Kimbolton School), Painted For Charles Montagu, 1 Duke of Manchester



**: PA-F00088-0013**

**Title:** Louis XIV with the French Army, Battle of Ramillies

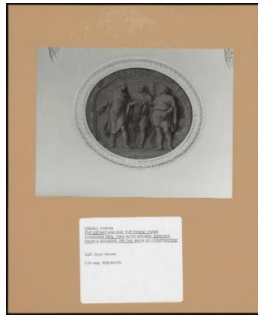
**Provenance:** National Trust Plas Newydd



**: PA-F00088-0019**

**Title:** Battle of Tangiers (Mapquest) the Duke of Marlborough and Prince Eugene of Savoy Entering the Enemy's Intrenchments

**Provenance:** National Trust Plas Newydd



**: PA-F00091-0013**

**Title:** The Departure for the Chase: Three Standing Men, Two with Spears; Derived From a Roundel on the Arch of Constantine

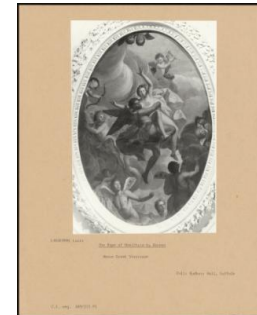
**Provenance:** Syon House



**: PA-F00091-0015**

**Title:** Grisaille Panel: the Death of Meleager

**Provenance:** Syon House



**: PA-F00092-0019**

**Title:** The Rape of Orithyia by Boreas

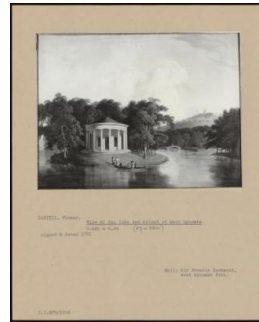
**Provenance:** Sudbury Hall, Suffolk



**: PA-F00094-0003**

**Title:** Women Bathing in Ruined Temple

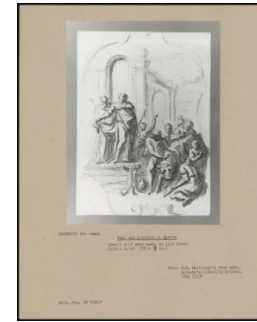
**Provenance:** painted for John Parker; by Family descent to the Earl of Morley; National Trust, Saltram



**: PA-F00098-0021**

**Title:** View of the Lake and Island at West Wycombe

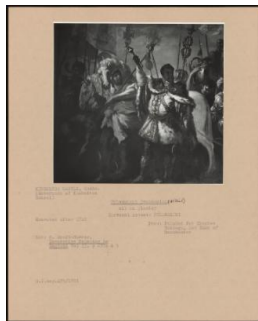
**Provenance:** Sir Francis Dashwood, West Wycombe Park.



**: PA-F00104-0017**

**Title:** Paul and Barnabas Lystra

**Provenance:** H. S. Reitlinger; Anonymous sale, Sotheby's, 11-17 October 1984 (23)



**: PA-F00081-0005**

**Title:** Triumphant Procession (detail)

**Provenance:** KIMBOLTON CASTLE, Cambs. (Governors Of Kimbolton School), Painted For Charles Montagu, 1 Duke of Manchester



**: PA-F00081-0007**

**Title:** Triumphant Procession of a Roman Emperor

**Provenance:** KIMBOLTON CASTLE (Cambs.) (Governors Of Kimbolton School), Painted For Charles Montagu, 1 Duke of Manchester



**: PA-F00081-0017**

**Title:** Triumphant Procession (detail)

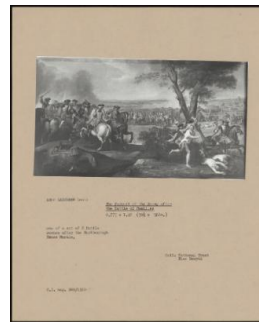
**Provenance:** KIMBOLTON CASTLE, Cambs. (Governors Of Kimbolton School), Painted For Charles Montagu, 1 Duke of Manchester



: PA-F00088-0005

**Title:** Three Scenes From the Battle of Blenheim

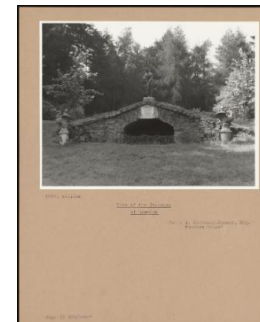
**Provenance:** National Trust Plas Newydd



: PA-F00088-0009

**Title:** The Pursuit of the Enemy after the Battle of Ramillies

**Provenance:** National Trust Plas Newydd



: PA-F00096-0007

**Title:** View of the Cascades at Rousham

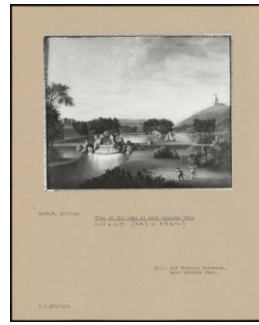
**Provenance:** T. Cottrell-Dormer, Esq. Rousham House



: PA-F00096-0013

**Title:** Sketch of Rousham

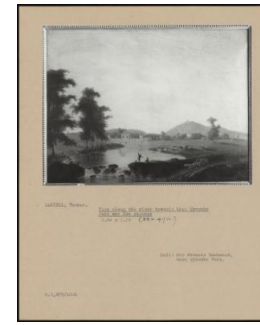
**Provenance:** T. Cottrell-Dormer, Esq., Rousham House



: PA-F00098-0011

**Title:** View of the Lake at West Wycombe Park

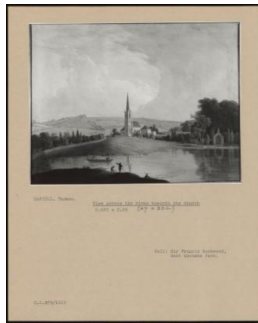
**Provenance:** Sir Francis Dashwood, West Wycombe Park.



: PA-F00098-0019

**Title:** View Along the River Towards West Wycombe Park and the Cascade

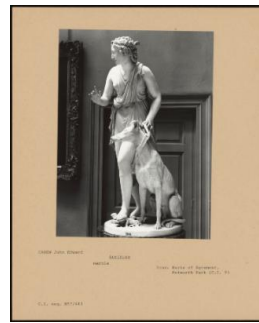
**Provenance:** Sir Francis Dashwood, West Wycombe Park.



: PA-F00098-0025

**Title:** View Across the River Towards the Church

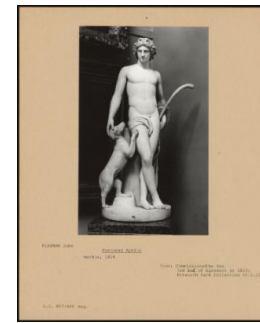
**Provenance:** Sir Francis Dashwood, West Wycombe Park.



: PA-F00076-0017

**Title:** Arethusa

**Provenance:** Earls of Egremont, Petworth Park (Courtauld Photographic Survey 9)

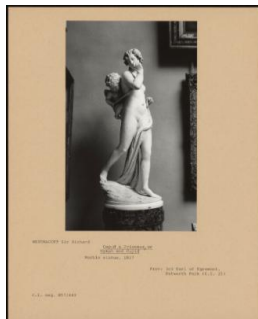


: PA-F00076-0023

**Title:** Pastoral Apollo

**Provenance:** Commissioned by the 3 Earl of Egremont in 1813; Petworth Park Collection (Courtauld Photographic Survey 12)

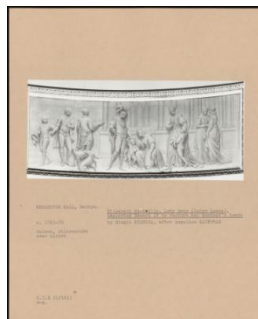




**: PA-F00076-0029**

**Title:** Cupid a Prisoner, Or Nymph and Cupid

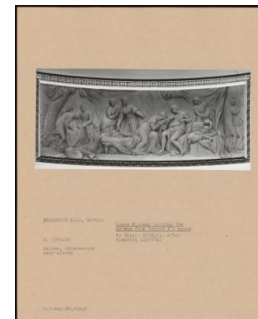
**Provenance:** 3 Earl of Egremont, Petworth Park (Courtauld Photographic Survey 15)



**: PA-F00080-0005**

**Title:** Elizabeth Woodville, Lady Grey (Later Queen), Imploring Edward IV to Restore Her Husband's Lands

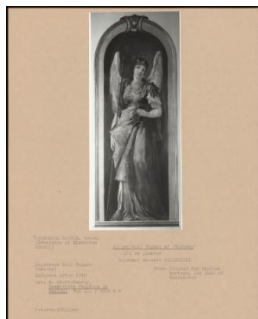
**Provenance:** KEDLESTON HALL, Derbys



**: PA-F00080-0007**

**Title:** Queen Eleanor Sucking the Poison From Edward I's Wound

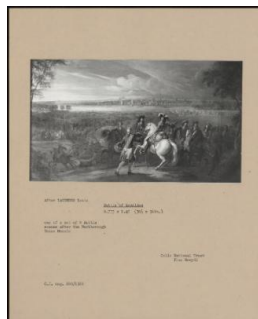
**Provenance:** KEDLESTON HALL, Derbys.



**: PA-F00081-0021**

**Title:** Allegorical Figure of 'victory'

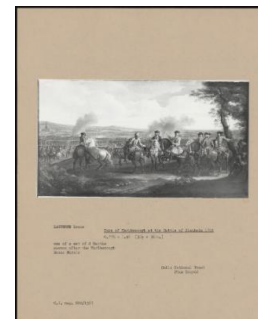
**Provenance:** KIMBOLTON CASTLE, Cambs. (Governors Of Kimbolton School), Painted For Charles Montagu, 1 Duke of Manchester



**: PA-F00088-0015**

**Title:** Battle of Ramillies

**Provenance:** National Trust Plas Newydd



**: PA-F00088-0017**

**Title:** Duke of Marlborough at the Battle of Blenheim 1704

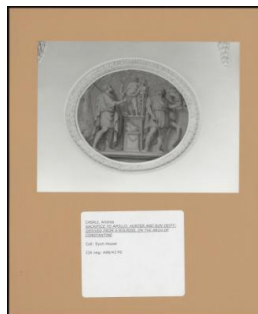
**Provenance:** National Trust Plas Newydd



**: PA-F00091-0003**

**Title:** Interior, General View, Looking South

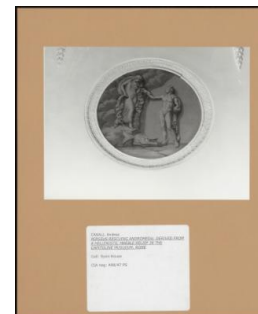
**Provenance:** Syon House



**: PA-F00091-0009**

**Title:** Sacrifice to Apollo, Hunter and Sun Deity; Derived From a Roundel on the Arch of Constantine

**Provenance:** Syon House



**: PA-F00091-0019**

**Title:** Perseus Rescuing Andromeda; Derived From a Hellenistic Marble Relief in the Capitoline Museum, Rome

**Provenance:** Syon House



: PA-F00092-0009

**Title:** Putti with Torches

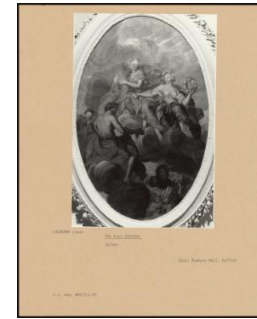
**Provenance:** Sudbury Hall,  
Suffolk



: PA-F00092-0011

**Title:** Leda and the Swan

**Provenance:** Sudbury Hall,  
Suffolk



: PA-F00092-0021

**Title:** The Four Seasons

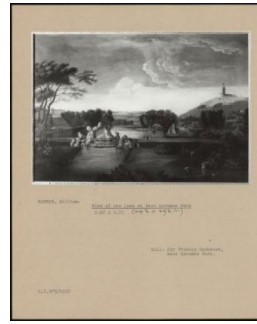
**Provenance:** Sudbury Hall,  
Suffolk



: PA-F00096-0003

**Title:** Ceiling of the Music  
Room at Rousham

**Provenance:** T. Cottrell-  
Dormer, Esq. Rousham House



: PA-F00098-0007

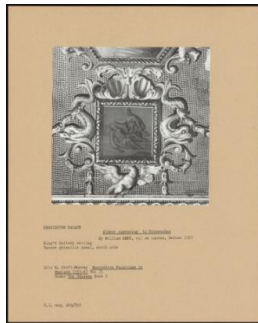
**Title:** View of the Lake at West  
Wycombe Park

**Provenance:** Sir Francis  
Dashwood, West Wycombe  
Park.



: PA-F00098-0079

**Title:** Bacchus Crowning  
Ariadne; Young Bacchanals at  
Play



: PA-F00124-0007

**Title:** Athene Appearing to  
Telemachus



: PA-F00124-0015

**Title:** Penelope Asleep on Her  
Couch



: PA-F00124-0041

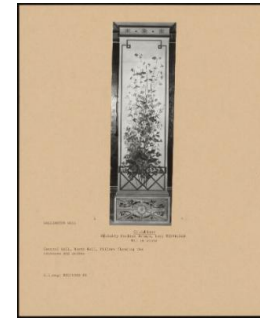
**Title:** detail: Odysseus  
Escaping From Polyphemus



**: PA-F00124-0047**  
**Title:** Odysseus and the Sirens



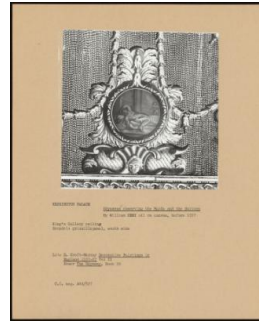
**: PA-F00124-0103**  
**Title:** Phineas



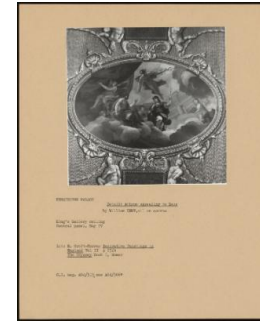
**: PA-F00127-0051**  
**Title:** Columbine



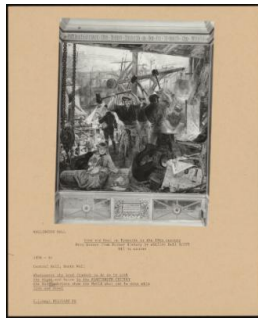
**: PA-F00124-0013**  
**Title:** Athene and Odysseus with Bow



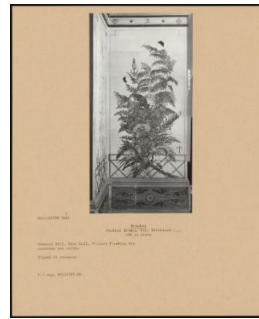
**: PA-F00124-0031**  
**Title:** Odysseus Observing the Maids and the Suitors



**: PA-F00124-0045**  
**Title:** detail: Athene Appealing to Zeus



**: PA-F00127-0029**  
**Title:** Iron and Coal on Tyneside in the 19th Century



**: PA-F00127-0041**  
**Title:** Bracken

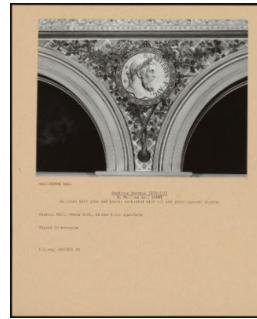


**: PA-F00127-0055**  
**Title:** Sweet Peas



: PA-F00127-0061

Title: Sunflowers



: PA-F00127-0069

Title: Septimius Severus (146-211)



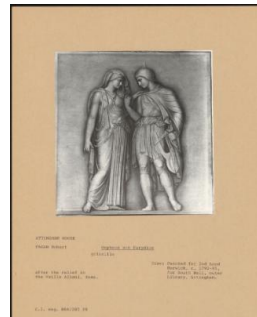
: PA-F00127-0059

Title: Wild Flowers



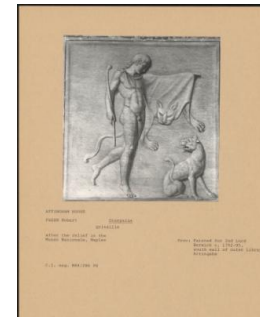
: PA-F00127-0063

Title: Dahlias



: PA-F00060-0003

Title: Orpheus And Eurydice  
Provenance: Painted for 2nd Lord Berwick, ca. 1792-95, for South wall, outer Library, Attingham.



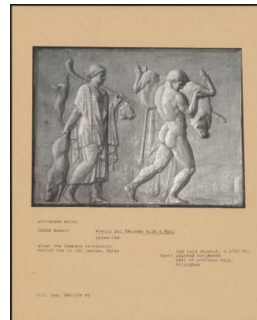
: PA-F00060-0005

Title: Dionysius  
Provenance: Painted for 2nd Lord Berwick ca. 1792-95, south wall of outer Library, Attingham



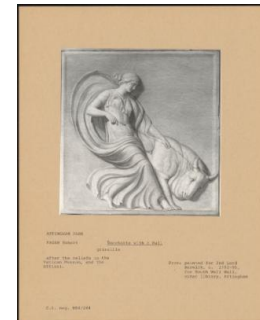
: PA-F00060-0007

Title: Pasquino  
Provenance: painted for 2nd Lord Berwick, ca. 1792-95, West Wall of outer Library, Attingham.



: PA-F00060-0009

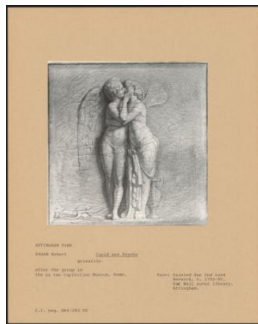
Title: Winter And Theseus With A Bull  
Provenance: painted for North wall of entrance hall, Attingham



: PA-F00060-0011

Title: Bacchant With A Bull  
Provenance: painted for 2nd Lord Berwick, ca. 1792-95, for South Wall Wall, outer library, Attingham

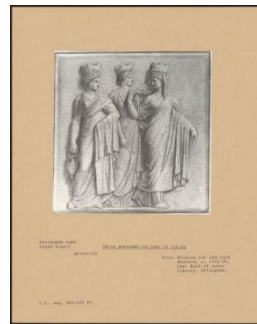




**: PA-F00060-0013**

**Title:** Cupid And Psyche

**Provenance:** Painted for 2nd Lord Berwick, ca. 1792-95, East Wall outer library, Attingham.



**: PA-F00060-0015**

**Title:** Three Personifications Of Cities

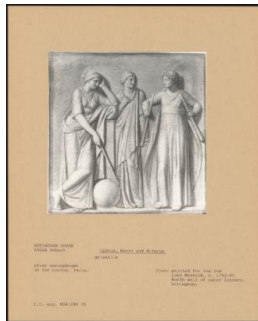
**Provenance:** Painted for 2nd Lord Berwick, ca. 1792-95 , East Wall of outer Library, Attingham.



**: PA-F00060-0017**

**Title:** Calliope And Thalia

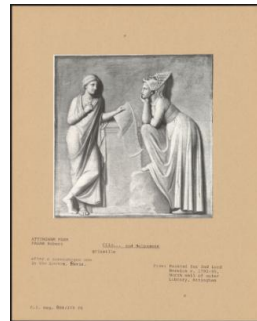
**Provenance:** painted for 2nd Lord Berwick ca. 1792-95, North wall, Outer Library Attingham.



**: PA-F00060-0019**

**Title:** Urania, Erato And Euterpe

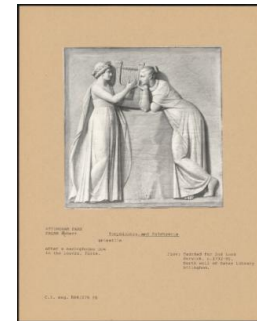
**Provenance:** painted for the 2nd Lord Berwick, ca. 1792-95 North wall of outer library, Attingham.



**: PA-F00060-0021**

**Title:** Clio And Melpomene

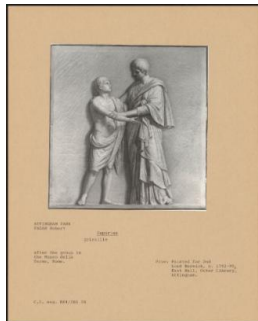
**Provenance:** Painted for 2nd Lord Berwick ca. 1792-95, North wall of outer Library, Attingham



**: PA-F00060-0023**

**Title:** Terpsichore And Polyhymnia

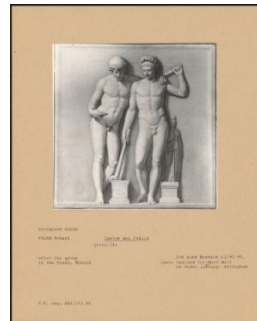
**Provenance:** Painted for 2nd Lord berwick, ca. 1792-95, North wall of Outer Library Attingham.



**: PA-F00060-0025**

**Title:** Papirius

**Provenance:** Painted for 2nd Lord Berwick, ca. 1792-95, East Wall, Outer Library Attingham.



**: PA-F00060-0027**

**Title:** Castor And Pollux

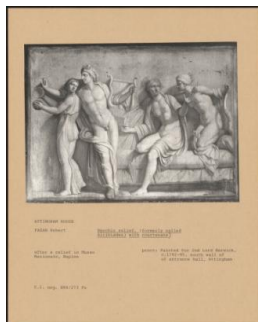
**Provenance:** Painted for West Wall of Outer library, Attingham



**: PA-F00060-0029**

**Title:** Paetus And Arria

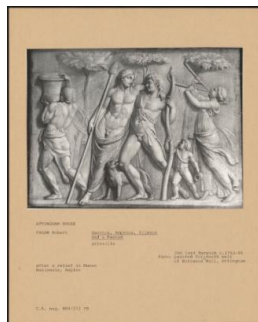
**Provenance:** painted for 2nd Lord Berwick ca. 1792-95, west wall of outer Library, Attingham



**: PA-F00060-0031**

**Title:** Bacchic Relief, (Formerly Called Alcibiades) With Courtesans)

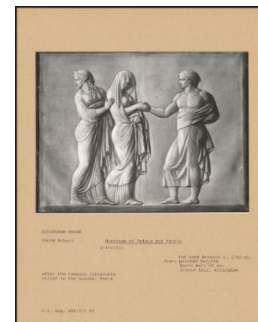
**Provenance:** Provv: Painted for 2nd Lord Berwick, ca. 1792-95, south wall of of entrance hall, Attingham



**: PA-F00060-0033**

**Title:** Bacchus, Ampelos, Silenos And A Maenad

**Provenance:** painted for South wall of Entrance Hall, Attingham



**: PA-F00060-0035**

**Title:** Marriage Of Peleus And Thetis

**Provenance:** painted for the North Wall of entrance hall, Attingham



**: PA-F00061-0003**

**Title:** Glorification Of The Duke Of Marlborough

**Provenance:** Painted for Sarah, 1st Duke of Marlborough



**: PA-F00063-0019**

**Title:** East Wall: Julius Caesar Sacrificing Before Going To The Senate

**Provenance:** Painted for William Cavendish, 1st Duke of Devonshire



**: PA-F00064-0003**

**Title:** Studies Of Famous Personages, Originally Forming A Frieze Around The Cornice Of A Library, Now Divided Into Twelve Panels – From The Left: Sir Joseph Williamson, An Unidentified Figure, Bishop Seth Ward, Baron Charles De Secondat And Two Unidentified Figures

**Provenance:** Cornist Hall, Cornist Park, Flint, from where purchased by Christopher Gibbs; Property of Christopher Gibbs; Sotheby's New York 'The Dealer's Eye' 26 January 2006 (1291)



**: PA-F00064-0005**

**Title:** Studies Of Famous Personages, Originally Forming A Frieze Around The Cornice Of A Library, Now Divided Into Twelve Panels – From The Left: John Locke, Thomas Gale Dd, Bishop Benjamin Hoadley, John Wallis Dd, Archbishop Thomas Cranmer, Thomas Birch Dd, Prophet Mohamed And Confucius

**Provenance:** Cornist Hall, Cornist Park, Flint, from where purchased by Christopher Gibbs; Property of Christopher Gibbs; Sotheby's New York 'The Dealer's Eye' 26 January 2006 (129h)



**: PA-F00064-0007**

**Title:** Studies Of Famous Personages, Originally Forming A Frieze Around The Cornice Of A Library, Now Divided Into Twelve Panels – From The Left: Stephen Hales, Anders Celsius, Sir Hans Sloane, Demosthenes And Christopher Columbus

**Provenance:** Cornist Hall, Cornist Park, Flint, from where purchased by Christopher Gibbs; Property of Christopher Gibbs; Sotheby's New York 'The Dealer's Eye' 26 January 2006 (129j)



**: PA-F00064-0009**

**Title:** Studies Of Famous Personages, Originally Forming A Frieze Around The Cornice Of A Library, Now Divided Into Twelve Panels – From The Left: Aristophanes, Torquato Tasso, Jean Baptiste Poquelin Known As Moliere, William Shakespeare, Dante Alighieri, Alexander Pope, Homer And Virgil

**Provenance:** Cornist Hall, Cornist Park, Flint, from where purchased by Christopher Gibbs; Property of Christopher Gibbs; Sotheby's New York 'The Dealer's Eye' 26 January 2006 (129g)



**: PA-F00064-0011**

**Title:** Studies Of Famous Personages, Originally Forming A Frieze Around The Cornice Of A Library, Now Divided Into Twelve Panels – From The Left: Ptolemy II Philadelphus, Thales, Galileo Galilei, Dr Edmond Halley, Nicholas Copernicus And Tycho Brache

**Provenance:** Cornist Hall, Cornist Park, Flint, from where purchased by Christopher Gibbs; Property of Christopher Gibbs; Sotheby's New York 'The Dealer's Eye' 26 January 2006 (129i)



**: PA-F00064-0013**

**Title:** Studies Of Famous Personages, Originally Forming A Frieze Around The Cornice Of A Library, Now Divided Into Twelve Panels – From The Left: King Charles Ii, Philip Iv, King Of Spain, William Harvey Md, Robert Boyle, Gerhardus Mercator And One Unidentified Figure

**Provenance:** Cornist Hall, Cornist Park, Flint, from where purchased by Christopher Gibbs; Property of Christopher Gibbs; Sotheby's New York 'The Dealer's Eye' 26 January 2006 (129d)



**: PA-F00064-0015**

**Title:** Studies Of Famous Personages, Originally Forming A Frieze Around The Cornice Of A Library, Now Divided Into Twelve Panels – From The Left: Edward Hyde, 1st Earl Of Clarendon, Two Unidentified Figures, Niccolo Machiavelli, Alexander The Great, Julius Caesar

**Provenance:** Cornist Hall, Cornist Park, Flint, from where purchased by Christopher Gibbs; Property of Christopher Gibbs; Sotheby's New York 'The Dealer's Eye' 26 January 2006 (129c)



**: PA-F00064-0017**

**Title:** Studies Of Famous Personages, Originally Forming A Frieze Around The Cornice Of A Library, Now Divided Into Twelve Panels – From The Left: St Jerome, Jacques Benigne Bossuet, Thomas More, Isaac Watts, And Possible St Gregory  
**Provenance:** Cornist Hall, Cornist Park, Flint, from where purchased by Christopher Gibbs; Property of Christopher Gibbs; Sotheby's New York 'The Dealer' s Eye' 26 January 2006 (129b)



**: PA-F00064-0019**

**Title:** Studies Of Famous Personages, Originally Forming A Frieze Around The Cornice Of A Library, Now Divided Into Twelve Panels – From The Left: Sir Christopher Wren, Sir Francis Prujean Md, Blaise Pascal, Sir John Vanbrugh, Professor Nicholas Saunderson, Sir Thomas Thornhill And John Wilkins  
**Provenance:** Cornist Hall, Cornist Park, Flint, from where purchased by Christopher Gibbs; Property of Christopher Gibbs; Sotheby's New York 'The Dealer' s Eye' 26 January 2006 (129f)



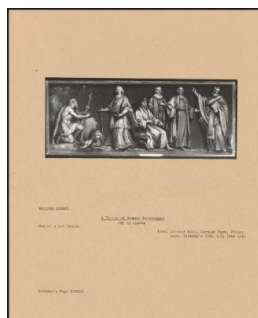
**: PA-F00064-0021**

**Title:** Studies Of Famous Personages, Originally Forming A Frieze Around The Cornice Of A Library, Now Divided Into Twelve Panels – From The Left: Erastothenes, John Flamsteed, Rene Descartes, Chrysippus Of Soli And Archimedes  
**Provenance:** Cornist Hall, Cornist Park, Flint, from where purchased by Christopher Gibbs; Property of Christopher Gibbs; Sotheby's New York 'The Dealer' s Eye' 26 January 2006 (129e)



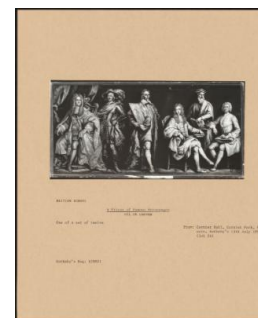
**: PA-F00064-0023**

**Title:** Studies Of Famous Personages, Originally Forming A Frieze Around The Cornice Of A Library, Now Divided Into Twelve Panels – From The Left: Jean–baptiste Massillon, Nicolas Boileau, Horace, Sappho, John Milton, Longinus And One Unidentified Figure  
**Provenance:** Cornist Hall, Cornist Park, Flint, from where purchased by Christopher Gibbs; Property of Christopher Gibbs; Sotheby's New York 'The Dealer' s Eye' 26 January 2006 (129a)



**: PA-F00067-0013**

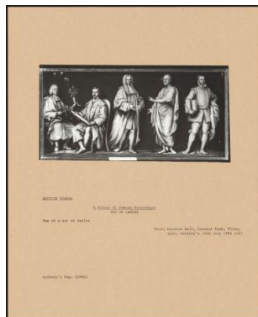
**Title:** A Frieze Of Famous Personages  
**Provenance:** Cornist Hall, Cornist Park, Flint; sale, Sotheby's 13 July 1994 (24)



**: PA-F00067-0015**

**Title:** A Frieze Of Famous Personages  
**Provenance:** Cornist Hall, Cornist Park, Flint; sale, Sotheby's 13 July 1994 (lot 24)





**: PA-F00067-0017**

**Title:** A Frieze Of Famous Personages

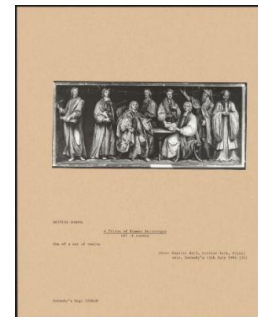
**Provenance:** Cornist Hall, Cornist Park, Flint; sale, Sotheby's 13 July 1994 (24)



**: PA-F00067-0019**

**Title:** A Frieze Of Famous Personages

**Provenance:** Cornist Hall, Cornist Park, Flint; sale, Sotheby's 13 July 1994 (24)



**: PA-F00067-0021**

**Title:** A Frieze Of Famous Personages

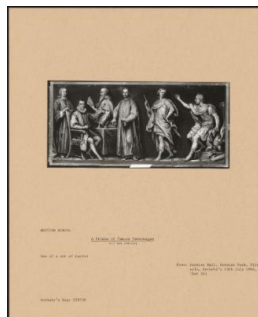
**Provenance:** Cornist Hall, Cornist Park, Flint; sale, Sotheby's 13 July 1994 (24)



**: PA-F00067-0023**

**Title:** A Frieze Of Famous Personages

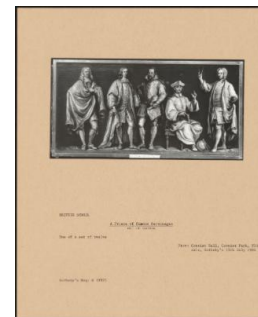
**Provenance:** Cornist Hall, Cornist Park, Flint; sale, Sotheby's 13 July 1994 (24)



**: PA-F00067-0025**

**Title:** A Frieze Of Famous Personages

**Provenance:** Cornist Hall, Cornist Park, Flint; sale, Sotheby's 13 July 1994 (lot 24)



**: PA-F00067-0027**

**Title:** A Frieze Of Famous Personages

**Provenance:** Cornist Hall, Cornist Park, Flint; sale, Sotheby's 13 July 1994 (24)



**: PA-F00067-0029**

**Title:** A Frieze Of Famous Personages

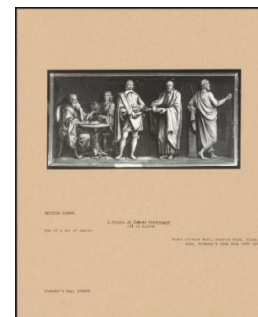
**Provenance:** Cornist Hall, Cornist Park, Flint; sale, Sotheby's 13 July 1994 (24)



**: PA-F00067-0031**

**Title:** A Frieze Of Famous Personages

**Provenance:** Cornist Hall, Cornist Park, Flint; sale, Sotheby's 13 July 1994 (24)



**: PA-F00067-0033**

**Title:** A Frieze Of Famous Personages

**Provenance:** Cornist Hall, Cornist Park, Flint; sale, Sotheby's 13 July 1994 (24)



**: PA-F00067-0035**

**Title:** A Frieze Of Famous Personages

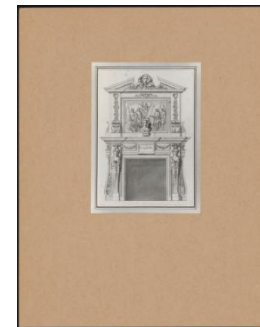
**Provenance:** Cornist Hall, Cornist Park, Flint; sale, Sotheby's 13 July 1994 (24)



**: PA-F00069-0003**

**Title:** Design For The Marble Parlour At Houghton Hall

**Provenance:** Anonymous sale, Sotheby's, 1 April 1993 (37)



**: PA-F00069-0005**

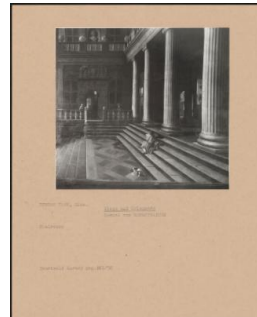
**Title:** PA-F00069-0005

**Provenance:** Courtauld



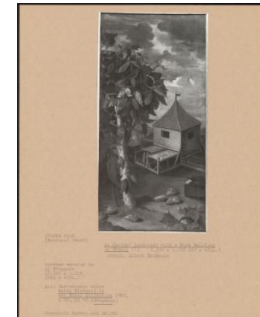
**: PA-F00071-0003**

**Title:** View Down A Corridor



**: PA-F00071-0005**

**Title:** Steps And Colonnade



**: PA-F00071-0007**

**Title:** An Upright Landscape With A Farm Building In Brazil



**: PA-F00073-0041**

**Title:** The Gallery, Hardwick Hall, Derbyshire

**Provenance:** Private Collection L