

Basic Report



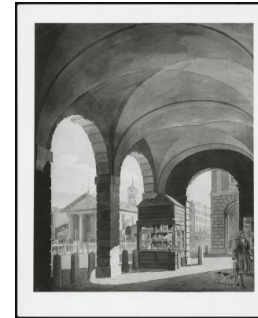
: PA-F00727-0013

Title: A Georgian Mansion, Front and Side Elevations (Part of the Ground Plan on Verso)



: PA-F00727-0007

Title: Rochhewn Temple of Elephants



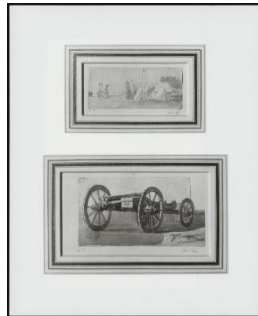
: PA-F00727-0017

Title: Covent Garden
Provenance: Leonard G. Duke (1890–1971)



: PA-F00727-0003

Title: Coach with Coat of Crime in Panel



: PA-F00727-0011

Title: A. Encampment Scene; B. Limber
Provenance: Purchased from J. S. Maas and Co., January 1962



: PA-F00727-0015

Title: Wooden Bridge Over Virginia Water
Provenance: British Museum Album



: PA-F00727-0025

Title: Whiteball, Showing Holbein's Gate and the Banqueting Hall.



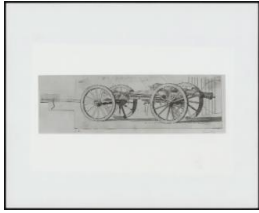
: PA-F00727-0019

Title: A View of Boxhill From Norbury Park, Surrey
Provenance: Yale Center for British Art, Paul Mellon Fund (B1982.7)



: PA-F00727-0005

Title: An Encampment in Hyde Park.
Provenance: Purchased from J. S. Maas, January 1962



: PA-F00727-0009

Title: Gun and Limber, No. 7
Provenance: Purchased from
J. S. Maas and Co., January
1962



: PA-F00727-0021

Title: Virginia Water: The
Grotto after the Great Flood



: PA-F00727-0023

Title: PA-F00727-0023
Provenance: Iolo A. Williams
(1890–1962) (1890-1962)



: PA-F00727-0027

Title: On the Road to Datchet
Provenance: William Sandby;
Herbert Peake