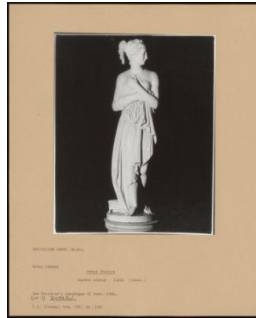


# Basic Report



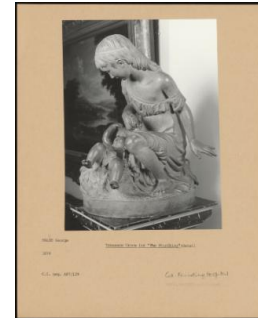
**: PA-F01206-0029**

**Title:** Adam and Eve;  
Innocence Mourning the Loss  
of a Dove  
**Provenance:** Dr. Nevinson;  
bought by Joseph Neeld in  
1847



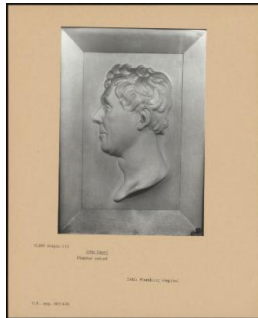
**: PA-F01206-0037**

**Title:** Venus Italica



**: PA-F01207-0009**

**Title:** Treasure Trove or "The  
Foundling" (detail)  
**Provenance:** Foundling  
Hospital



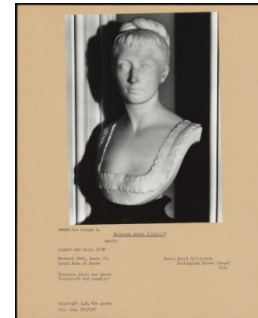
**: PA-F01207-0023**

**Title:** John Capel  
**Provenance:** Foundling  
Hospital



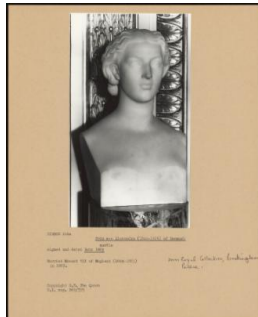
**: PA-F01223-0005**

**Title:** Edward, Duke Of Kent  
(1767-1820)  
**Provenance:** Royal Collection;  
Buckingham Palace (C. I. No.  
2)



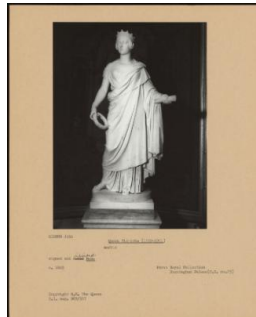
**: PA-F01223-0009**

**Title:** Princess Alice (1843-78)  
**Provenance:** Royal Collection;  
Buckingham Palace (C. I. No.  
4)



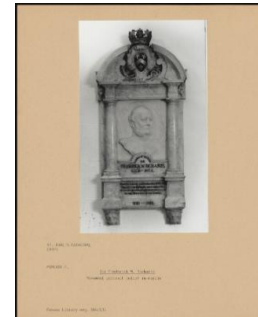
**: PA-F01223-0019**

**Title:** Princess Alexandra  
(1844-1925) Of Denmark  
**Provenance:** Royal Collection,  
Buckingham Palace.



**: PA-F01223-0021**

**Title:** Queen Victoria (1819-  
1901)  
**Provenance:** Royal Collection;  
Buckingham Palace (C. I. No.  
25)



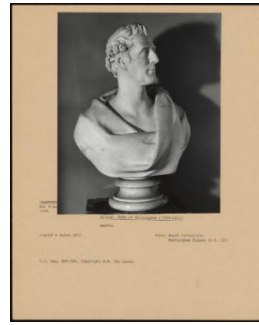
**: PA-F01213-0101**

**Title:** Sir Frederick W. Richards  
**Provenance:** ST. PAUL'S  
CATHEDRAL CRYPT



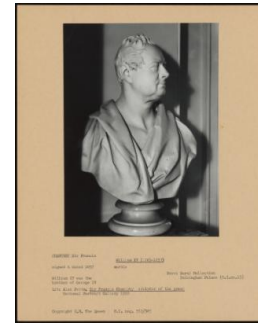
**: PA-F01216-0049**

**Title:** Monument to the Earl and Countess of Mountrath  
**Provenance:** Westminster Abbey; N. Transept, east aisle



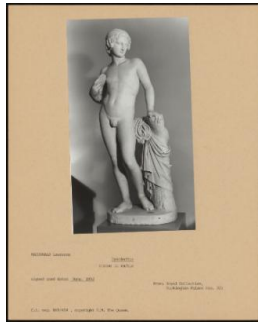
**: PA-F01223-0011**

**Title:** Arthur, Duke Of Wellington (1769-1852)  
**Provenance:** Royal Collection; Buckingham Palace (C. I. 12)



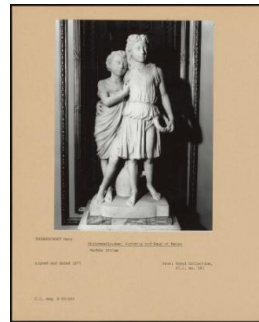
**: PA-F01223-0013**

**Title:** William IV (1765-1837)  
**Provenance:** Royal Collection; Buckingham Palace (C. I. No. 13)



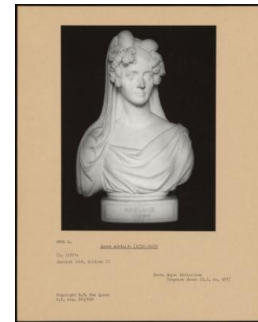
**: PA-F01223-0023**

**Title:** Hyacinthus  
**Provenance:** Royal Collection, Buckingham Palace (no. 32)



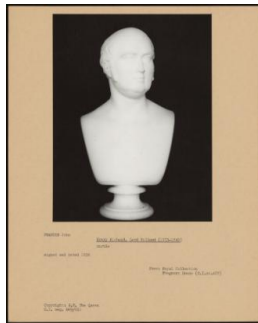
**: PA-F01223-0027**

**Title:** Princess (Louise) Victoria And Maud Of Wales  
**Provenance:** Royal Collection, (C. I. No. 54)



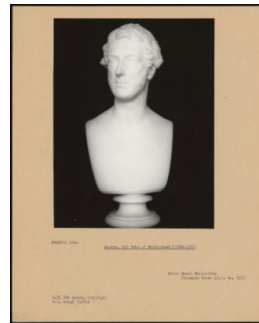
**: PA-F01224-0007**

**Title:** Queen Adelaide (1792-1849)  
**Provenance:** Royal Collection, Frogmore House (Courtauld Photographic Survey No. 428)



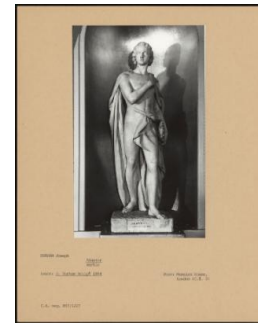
**: PA-F01224-0009**

**Title:** Henry Richard, Lord Holland (1773-1840)  
**Provenance:** Royal Collection, Frogmore House (Courtauld Photographic Survey No. 429)



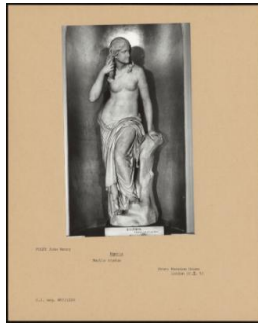
**: PA-F01224-0015**

**Title:** George, 2nd Duke of Sutherland (1780-1801)  
**Provenance:** Royal Collection, Frogmore House (Courtauld Photographic Survey No. 432)



**: PA-F01210-0007**

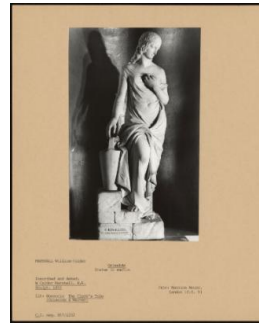
**Title:** Alastor  
**Provenance:** Mansion House, London (Courtauld Photographic Survey 3)



**: PA-F01210-0011**

**Title:** Egeria

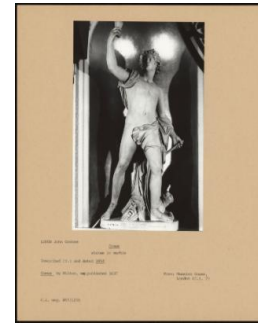
**Provenance:** Mansion House, London (Courtauld Photographic Survey 5)



**: PA-F01210-0019**

**Title:** Griselda

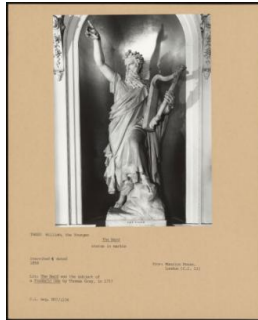
**Provenance:** Mansion House, London (Courtauld Photographic Survey 9)



**: PA-F01210-0015**

**Title:** Comus

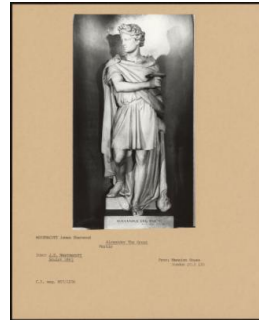
**Provenance:** Mansion House, London (Courtauld Photographic Survey 7)



**: PA-F01210-0023**

**Title:** The Bard

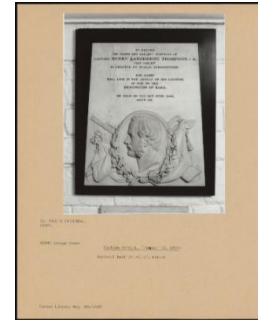
**Provenance:** Mansion House, London (Courtauld Photographic Survey 11)



**: PA-F01210-0027**

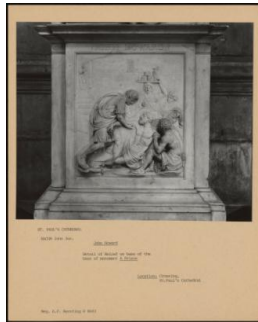
**Title:** Alexander the Great

**Provenance:** Mansion House, London (Courtauld Photographic Survey 13)



**: PA-F01213-0007**

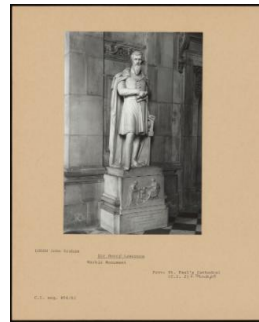
**Title:** Captain Henry L. Thompson (d. 1856)



**: PA-F01213-0021**

**Title:** John Howard

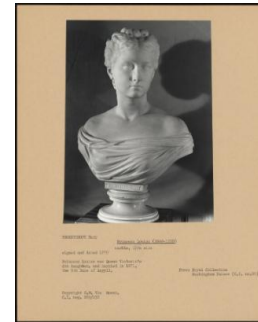
**Provenance:** Location: Crossing, St. Paul's Cathedral



**: PA-F01213-0085**

**Title:** Sir Henry Lawrence

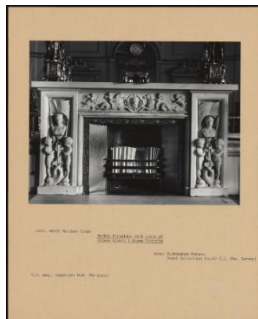
**Provenance:** St. Paul's Cathedral (Courtauld Photographic Survey 2) S. Transept



**: PA-F01223-0049**

**Title:** Princess Louise (1848-1939)

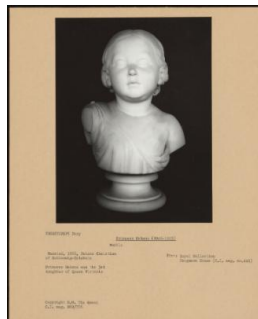
**Provenance:** Royal Collection Buckingham Palace (Courtauld Photographic Survey 60)



**: PA-F01223-0051**

**Title:** Marble Fireplace with Busts of Prince Albert and Queen Victoria

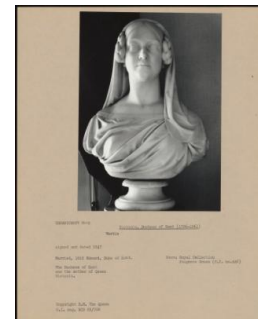
**Provenance:** Buckingham Palace Royal Collection (no. 67 Courtauld Photographic Survey)



**: PA-F01224-0025**

**Title:** Princess Helena (1846-1923)

**Provenance:** Royal Collection, Frogmore House (Courtauld Photographic Survey No. 444)



**: PA-F01224-0029**

**Title:** Victoria, Duchess of Kent (1786-1861)

**Provenance:** Royal Collection, Frogmore House (Courtauld Photographic Survey No. 446)



**: PA-F01227-0039**

**Title:** Benjamin Disraeli, 1st Earl of Beaconsfield

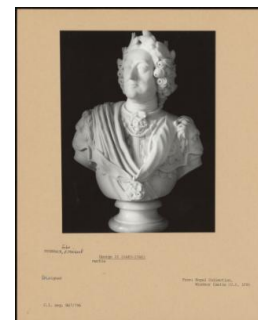
**Provenance:** Royal Collection; Windsor Castle (Courtauld Photographic Survey 356)



**: PA-F01227-0043**

**Title:** Edward VII (1841-1910)

**Provenance:** Royal Collection; Windsor Castle (Courtauld Photographic Survey 351)



**: PA-F01227-0059**

**Title:** George II (1683-1760)

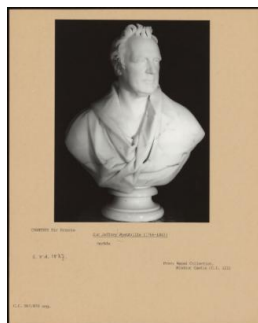
**Provenance:** Royal Collection, Windsor Castle (Courtauld Photographic Survey 179)



**: PA-F01227-0061**

**Title:** Queen Caroline (1683-1737)

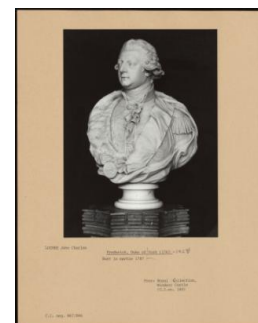
**Provenance:** Commissioned by Queen Caroline's, Library, St James's Park, London. By descent. Royal Collection Windsor Castle (Courtauld Photographic Survey 178)



**: PA-F01227-0133**

**Title:** Sir Jeffrey Wyatville (1766-1840)

**Provenance:** Royal Collection, Windsor Castle (Courtauld Photographic Survey 121)

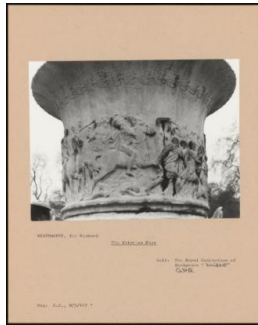


**: PA-F01227-0139**

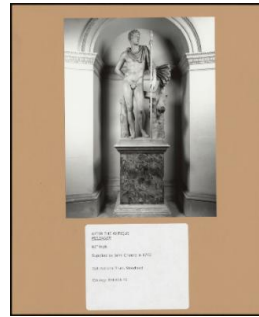
**Title:** Frederick, Duke of York (1763-1827)

**Provenance:** Royal Collection, Windsor Castle (Courtauld Photographic Survey No. 148)

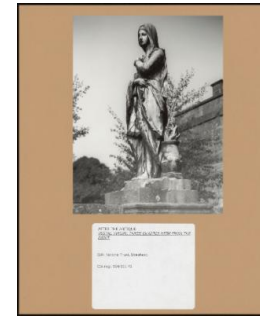




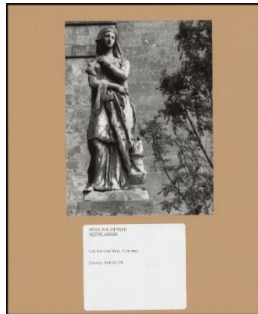
**: PA-F01227-0147**  
**Title:** The Waterloo Vase  
**Provenance:** The Royal Collection of Sculpture; Windsor Castle



**: PA-F01229-0003**  
**Title:** Meleager  
**Provenance:** National Trust, Stourhead



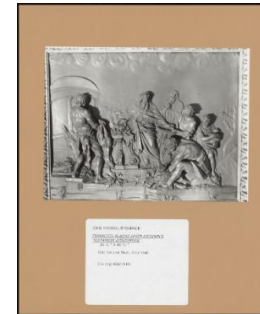
**: PA-F01229-0081**  
**Title:** Vestal Virgin, Three Quarter View From the Right  
**Provenance:** National Trust, Stourhead



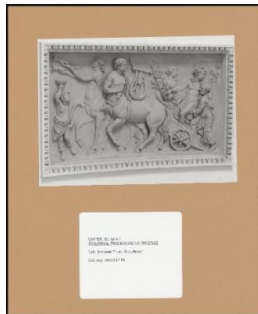
**: PA-F01229-0083**  
**Title:** Vestal Virgin  
**Provenance:** National Trust, Stourhead



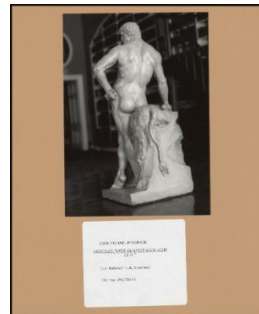
**: PA-F01229-0095**  
**Title:** detail of the Chimney Piece and Overmantel From the House at Warendon. Possibly Flemish ca. 1680  
**Provenance:** National Trust, Stourhead



**: PA-F01229-0097**  
**Title:** Terracotta Plaque after Poussin's 'testament D'eudamidas'  
**Provenance:** National Trust, Stourhead



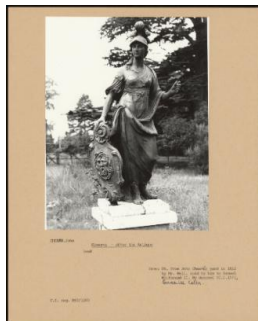
**: PA-F01229-0165**  
**Title:** Triumphal Procession of Bacchus  
**Provenance:** National Trust, Stourhead



**: PA-F01229-0169**  
**Title:** Hercules. Three Quarter Back View  
**Provenance:** National Trust, Stourhead



**: PA-F01230-0007**  
**Title:** Georgina Mary, Lady De Tabley (1794-1859)  
**Provenance:** WYATT Richard James



**: PA-F01238-0011**

**Title:** Minerva—After the Antique

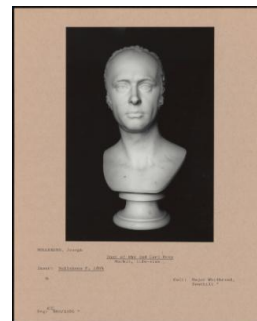
**Provenance:** bought from John Cheere's yard in 1812, by Mr Bell, sold by him to Samuel Whitbread II. By descent (Courtauld Photographic Survey 157), South Hill Collection.



**: PA-F01238-0023**

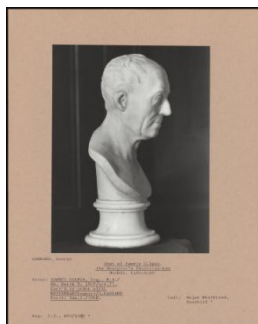
**Title:** Samson Slaying the Philistine

**Provenance:** St. By Samuel Whitbread for Southill Park, Beds. After death of sculptor in 1812; Southill Collection (Courtauld Photographic Survey 151)



**: PA-F01238-0035**

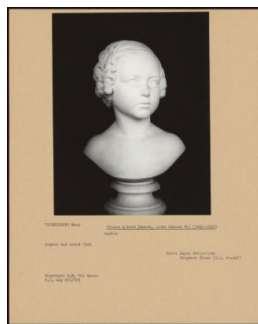
**Title:** Bust of the 2nd Earl Grey  
**Provenance:** Major Whitbread, Southill



**: PA-F01238-0051**

**Title:** Bust of Sawrey Gilpin, the Sculptor's Father-In-Law

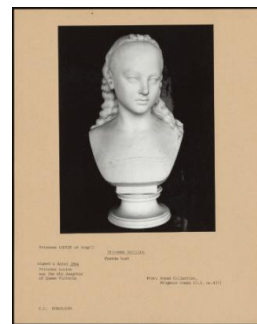
**Provenance:** Major Whitbread, Southill



**: PA-F01224-0017**

**Title:** Prince Albert Edward, Later Edward VII (1841-1910)

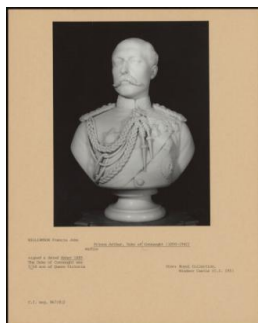
**Provenance:** Royal Collection, Frogmore House (Courtauld Photographic Survey No. 441)



**: PA-F01224-0019**

**Title:** Princess Beatrice

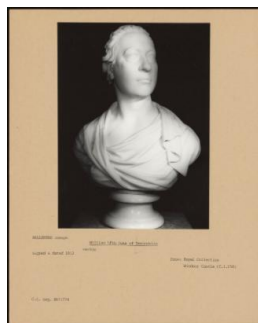
**Provenance:** Royal Collection, Frogmore House (Courtauld Photographic Survey No. 437)



**: PA-F01227-0031**

**Title:** Prince Arthur, Duke of Connaught (1850-1942)

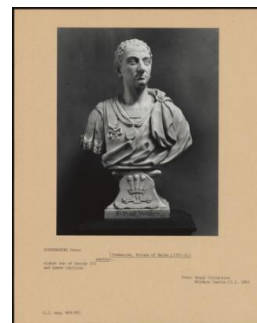
**Provenance:** Royal Collection, Windsor Castle (Courtauld Photographic Survey 195)



**: PA-F01227-0037**

**Title:** William 51st Duke of Devonshire

**Provenance:** Royal Collection; Windsor Castle (Courtauld Photographic Survey 158)



**: PA-F01227-0051**

**Title:** Frederick, Prince of Wales (1707-51)

**Provenance:** Royal Collection; Windsor Castle (Courtauld Photographic Survey 180)



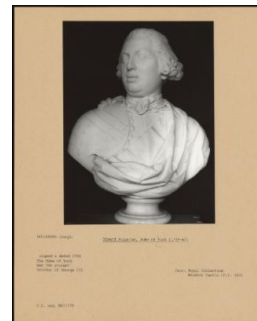
**: PA-F01227-0067**

**Title:** George IV (1762-1830)  
**Provenance:** Royal Collection, Windsor Castle (Courtauld Photographic Survey 129)



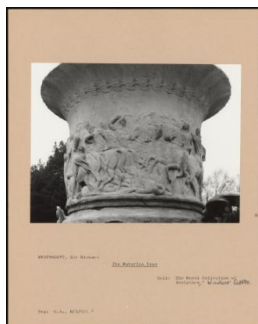
**: PA-F01227-0073**

**Title:** Oliver Goldsmith (1728-74)  
**Provenance:** Royal Collection, Windsor Castle (Courtauld Photographic Survey 239)



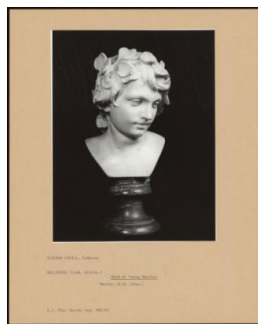
**: PA-F01227-0137**

**Title:** Edward Augustus, Duke of York (1739-67)  
**Provenance:** Royal Collection, Windsor Castle (Courtauld Photographic Survey 163)



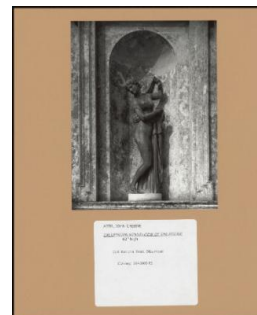
**: PA-F01227-0155**

**Title:** The Waterloo Vase  
**Provenance:** The Royal Collection of Sculpture; Windsor Castle



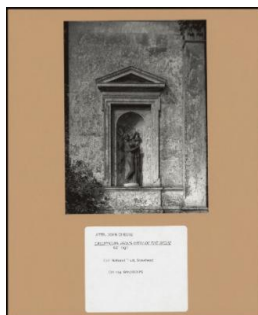
**: PA-F01228-0009**

**Title:** Head of Young Bacchus



**: PA-F01229-0065**

**Title:** Callipygian Venus-View of the Figure  
**Provenance:** National Trust, Stourhead



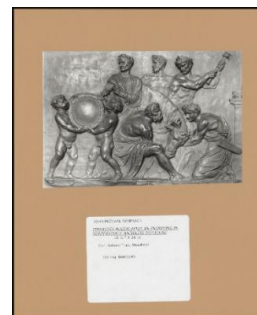
**: PA-F01229-0067**

**Title:** Callipygian Venus-View of the Niche  
**Provenance:** National Trust, Stourhead



**: PA-F01229-0079**

**Title:** Terracotta Plaque after Poussins 'testament D'eudamidas'  
**Provenance:** National Trust, Stourhead



**: PA-F01229-0099**

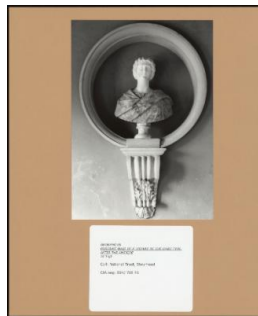
**Title:** Terracotta Plaque after an Engraving in Montfaucon "L'antiquité expliquée"  
**Provenance:** National Trust, Stourhead



**: PA-F01229-0101**

**Title:** The Borghese Vase

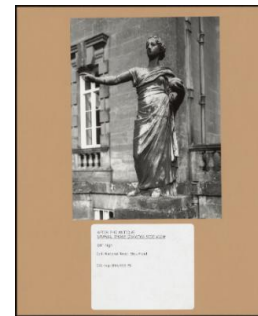
**Provenance:** National Trust, Stourhead



**: PA-F01229-0111**

**Title:** Portrait Bust of a Woman of the Gabii Type, after the Antique

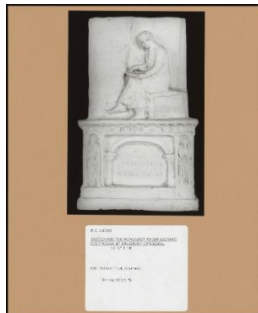
**Provenance:** National Trust, Stourhead



**: PA-F01229-0167**

**Title:** Urania, Three Quarter Side View

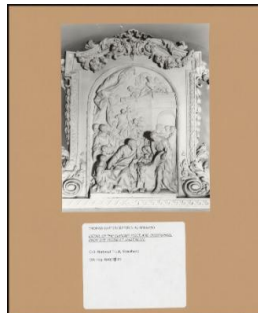
**Provenance:** National Trust, Stourhead



**: PA-F01229-0173**

**Title:** Sketch for the Monument to Sir Richard Colt Hoare at Salisbury Cathedral

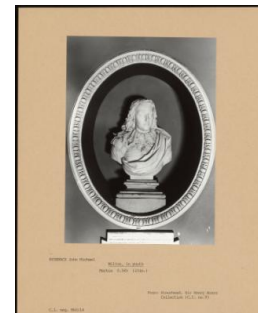
**Provenance:** National Trust, Stourhead



**: PA-F01229-0175**

**Title:** detail of the Chimney Piece and Overmantel From the House at Warendon.

**Provenance:** National Trust, Stourhead



**: PA-F01229-0179**

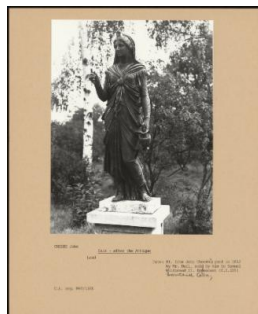
**Title:** Milton in Youth

**Provenance:** Stourhead: Sir Henry Hoare Collection (Courtauld Photographic Survey No. 9)



**: PA-F01230-0003**

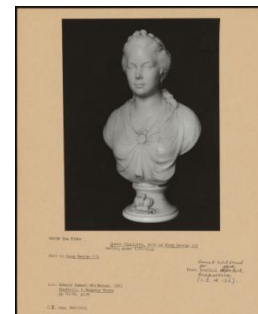
**Title:** Chimney Piece From Old Tabley Hall



**: PA-F01238-0015**

**Title:** Isis—After the Antique

**Provenance:** bought from John Cheere's yard in 1812, by Mr Bell, sold by him to Samuel Whitbread II. By descent (Courtauld Photographic Survey 155), South Hill Collection.

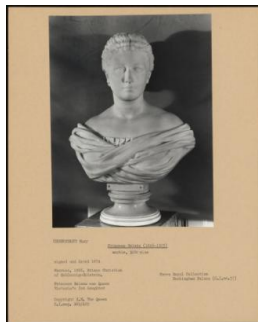


**: PA-F01238-0043**

**Title:** Queen Charlotte, Wife of King George III

**Provenance:** Samuel Whitbread for Southill Park, Bedfordshire (Courtauld Photographic Survey No. 132)

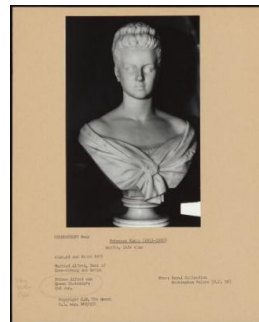




**: PA-F01223-0043**

**Title:** Princess Helena (1846-1923)

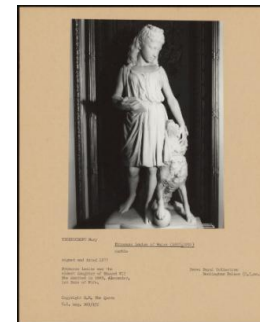
**Provenance:** Royal Collection  
Buckingham Palace (Courtauld  
Photographic Survey No. 57)



**: PA-F01223-0045**

**Title:** Princess Marie (1853-1920)

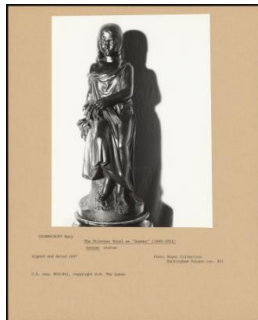
**Provenance:** Royal Collection  
Buckingham Palace (Courtauld  
Photographic Survey 58)



**: PA-F01223-0047**

**Title:** Princess Louise of Wales  
(1867-1931)

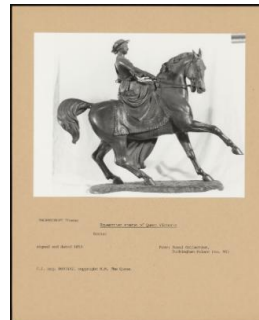
**Provenance:** Royal Collection  
Buckingham Palace (Courtauld  
Photographic Survey 59)



**: PA-F01223-0061**

**Title:** The Princess Royal as  
"Summer" (1840-1901)

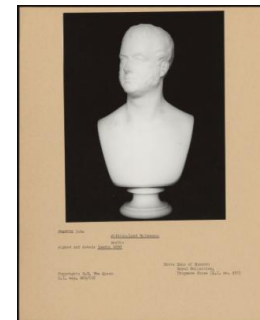
**Provenance:** Royal Collection  
Buckingham Palace (no. 89)



**: PA-F01223-0063**

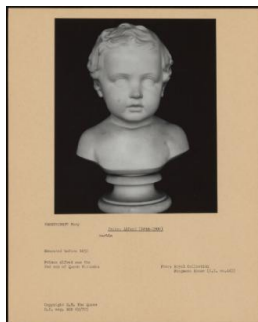
**Title:** Equestrian Statue of  
Queen Victoria

**Provenance:** Royal Collection  
Buckingham Palace (no. 90)



**: PA-F01224-0011**

**Title:** William, Lord Melbourne  
**Provenance:** Duke of Sussex;  
Royal Collection, Frogmore  
House (Courtauld  
Photographic Survey No. 430)



**: PA-F01224-0023**

**Title:** Prince Alfred (1844-1900)

**Provenance:** Royal Collection,  
Frogmore House (Courtauld  
Photographic Survey No. 443)



**: PA-F01227-0045**

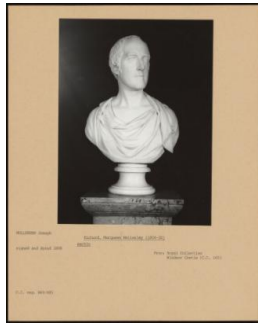
**Title:** Queen Elizabeth (1558-1603)

**Provenance:** Royal Collection;  
Windsor Castle (Courtauld  
Photographic Survey 348)



**: PA-F01227-0065**

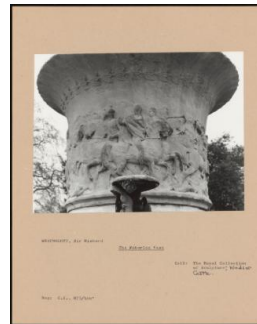
**Title:** George III (1738-1820)  
**Provenance:** Royal Collection,  
Windsor Castle (Courtauld  
Photographic Survey 106)



**: PA-F01227-0131**

**Title:** Richard, Marquess Wellesley (1804-30)

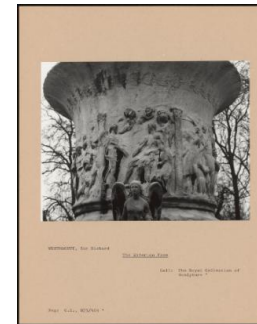
**Provenance:** Royal Collection Windsor Castle (Courtauld Photographic Survey 165)



**: PA-F01227-0145**

**Title:** The Waterloo Vase

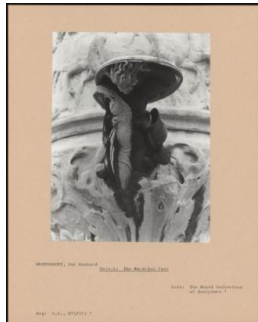
**Provenance:** The Royal Collection of Sculpture; Windsor Castle.



**: PA-F01227-0151**

**Title:** The Waterloo Vase

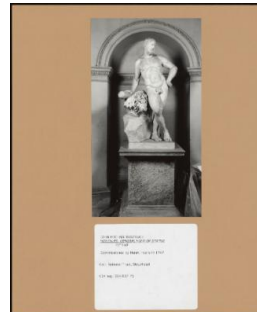
**Provenance:** The Royal Collection of Sculpture



**: PA-F01227-0159**

**Title:** detail: the Waterloo Vase

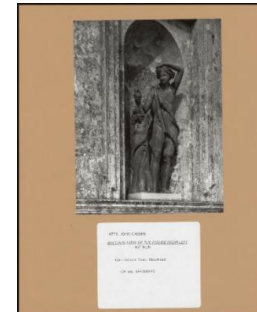
**Provenance:** The Royal Collection of Sculpture



**: PA-F01229-0011**

**Title:** Hercules, General View of Statue

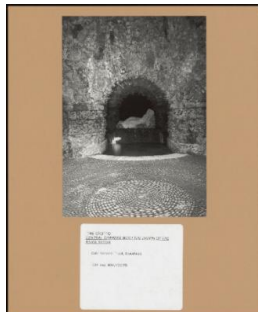
**Provenance:** National Trust, Stourhead



**: PA-F01229-0075**

**Title:** Bacchus-View of the Figure From Left

**Provenance:** National Trust, Stourhead



**: PA-F01229-0089**

**Title:** Central Chamber with the Nymph of the River Stour

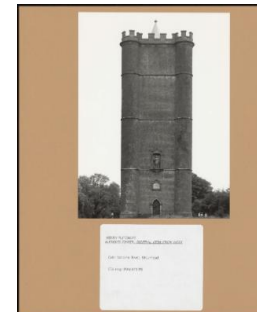
**Provenance:** National Trust, Stourhead



**: PA-F01229-0093**

**Title:** Mercury Bringing a Suppliant before Jupiter Juno and Neptune

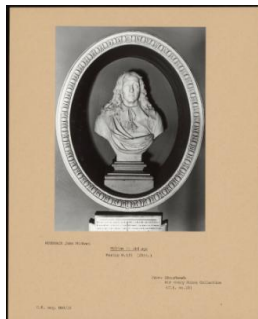
**Provenance:** National Trust, Stourhead



**: PA-F01229-0103**

**Title:** Alfred's Tower; General View From West

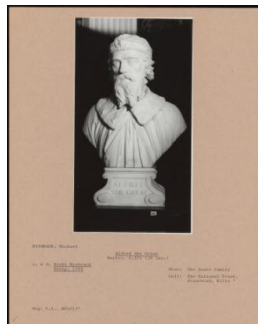
**Provenance:** National Trust, Stourhead



**: PA-F01229-0177**

**Title:** Milton in Old Age

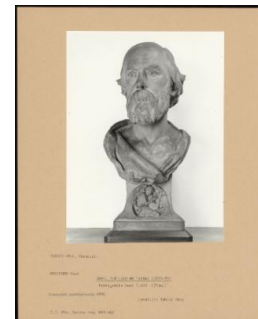
**Provenance:** Stourhead: Sir Henry Hoare Collection (C. L. No. 10)



**: PA-F01229-0181**

**Title:** Alfred the Great

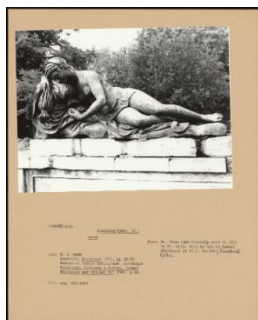
**Provenance:** The Hoare family; The National Trust, Stourhead, Wilts



**: PA-F01230-0009**

**Title:** John, 3rd Lord De Tabley (1835-95)

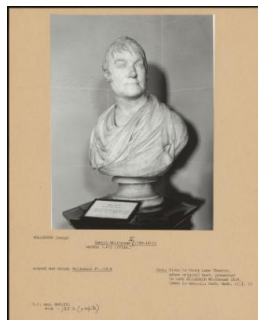
**Provenance:** MONTFORD Paul



**: PA-F01238-0025**

**Title:** Sleeping Nymph (II)

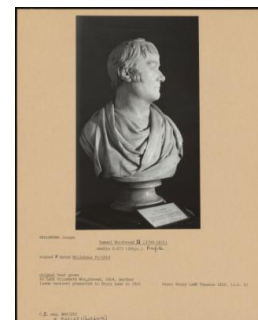
**Provenance:** bought from John Cheere's yard in 1812, by Mr Bell. Sold by him to Samuel Whitbread II (Courtauld Photographic Survey No. 146), South Hill Collection



**: PA-F01238-0031**

**Title:** Samuel Whitbread II (1790–1815)

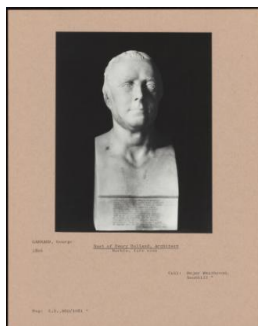
**Provenance:** Given to Drury lane Theatre, after original bust, presented to Lady Elizabeth Whitbread 1814, taken to Southill Park, Beds (Courtauld Photographic Survey 5)



**: PA-F01238-0033**

**Title:** Samuel Whitbread II (1790–1815)

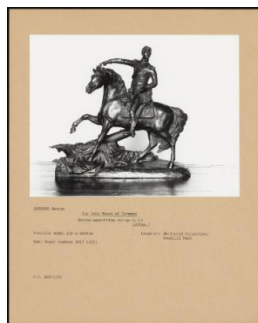
**Provenance:** Drury Lane Theatre 1815, (Courtauld Photographic Survey 5)



**: PA-F01238-0049**

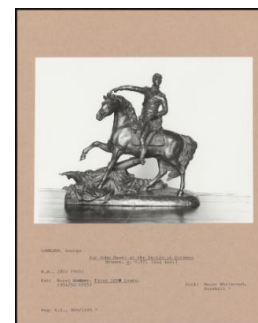
**Title:** Bust of Henry Holland, Architect

**Provenance:** Major Whitbread, Southill



**: PA-F01238-0055**

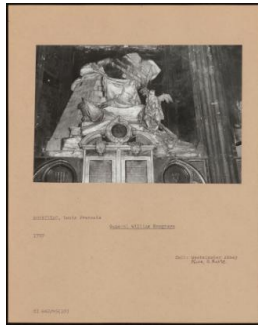
**Title:** Sir John Moore at Corunna



**: PA-F01238-0057**

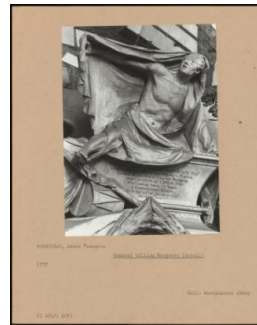
**Title:** Sir John Moore at the Battle of Corunna

**Provenance:** Major Whitbread, Southill



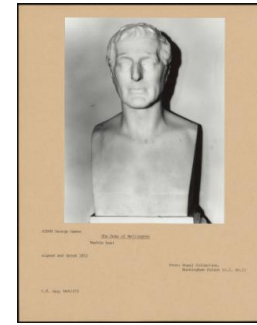
**: PA-F01216-0125**

**Title:** General William Hargrave  
**Provenance:** Westminster Abbey; Nave, S. Aisle



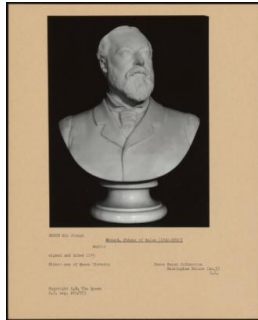
**: PA-F01216-0127**

**Title:** General William Hargrave (detail)  
**Provenance:** Westminster Abbey



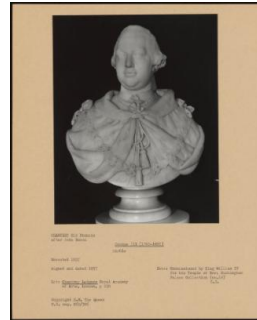
**: PA-F01223-0003**

**Title:** The Duke Of Wellington  
**Provenance:** Royal Collection, Buckingham Palace (c. I. No. 1)



**: PA-F01223-0007**

**Title:** Edward, Prince Of Wales (1841-1910)  
**Provenance:** Royal Collection; Buckingham Palace (C. I. No. 3)



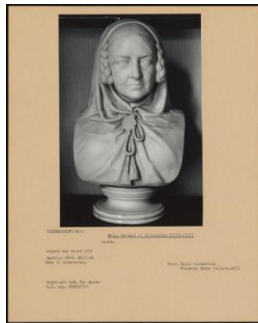
**: PA-F01223-0015**

**Title:** George III (1760-1820)  
**Provenance:** Commissioned by King William IV for his Temple at Kew; Buckingham Palace Collection (C. I. No. 14)



**: PA-F01223-0017**

**Title:** Victoria, Duchess Of Kent (1786-1861)  
**Provenance:** Royal Collection C. I. ; Buckingham Palace (No. 17)



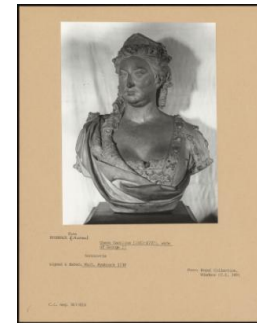
**: PA-F01224-0027**

**Title:** Mary, Duchess of Gloucester (1776-1857)  
**Provenance:** Royal Collection, Frogmore House (Courtauld Photographic Survey No. 445)



**: PA-F01227-0047**

**Title:** Edward VII (1841-1910)  
**Provenance:** Royal Collection; Windsor Castle (Courtauld Photographic Survey N.150)



**: PA-F01227-0063**

**Title:** Queen Caroline (1683-1737), Wife of George II  
**Provenance:** Royal Collection, Windsor Castle (Courtauld Photographic Survey 349)

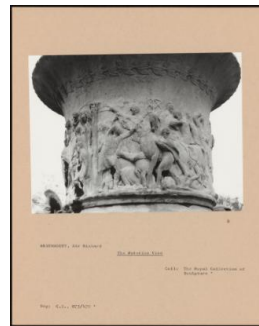




**: PA-F01227-0079**

**Title:** Grazia of Capua

**Provenance:** Royal Collection, Windsor Castle (Courtauld Photographic Survey No. 138)



**: PA-F01227-0153**

**Title:** The Waterloo Vase

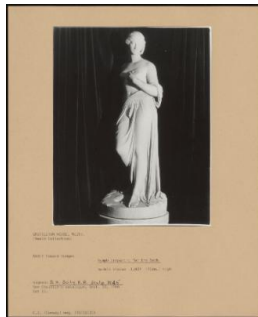
**Provenance:** The Royal Collection of Sculpture



**: PA-F01200-0005**

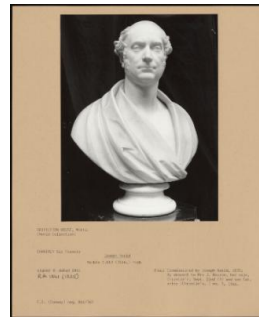
**Title:** Bacchus

**Provenance:** Dining Room set against north wall Burton Constable



**: PA-F01206-0039**

**Title:** Nymph Preparing For the Bath



**: PA-F01206-0047**

**Title:** Joseph Neeld

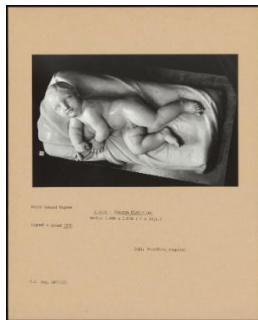
**Provenance:** Commissioned by Joseph Neeld, 1835; By descent to Mrs J. Bourne, her sale Christie's, September 22 (5) and see Cat. Entry (Christie's,) no. 5, 1966.



**: PA-F01207-0011**

**Title:** Aeneas Carrying Anchises Out of Troy, with Ascanius

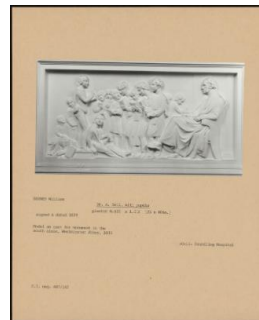
**Provenance:** Foundling Hospital



**: PA-F01207-0015**

**Title:** A Baby-(George Blakiston)

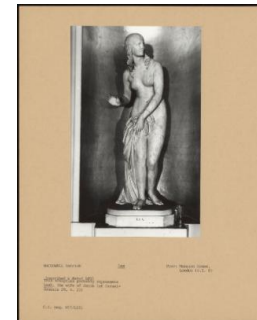
**Provenance:** Foundling Hospital



**: PA-F01207-0017**

**Title:** Dr. A. Bell, with Pupils

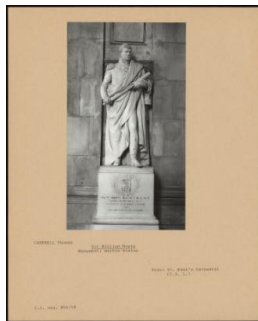
**Provenance:** Foundling Hospital



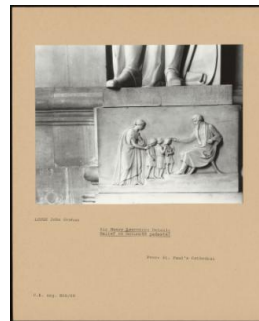
**: PA-F01210-0017**

**Title:** Lea

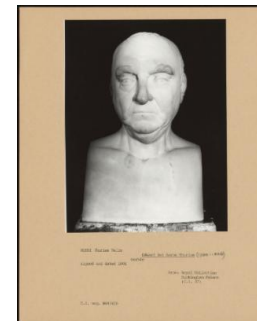
**Provenance:** Mansion House, London (Courtauld Photographic Survey 8)



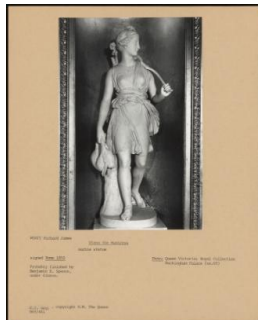
**: PA-F01213-0041**  
**Title:** Sir William Hoste  
**Provenance:** St. Paul's Cathedral (Courtauld Photographic Survey 1.)



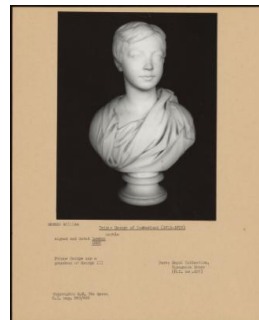
**: PA-F01213-0087**  
**Title:** Sir Henry Lawrence:  
 (detail): Relief on Monument Pedestal  
**Provenance:** St. Paul's Cathedral



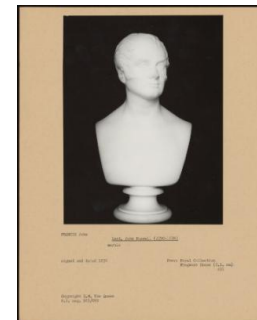
**: PA-F01223-0025**  
**Title:** Edward 1st Baron Thurlow (1730-1806)  
**Provenance:** Royal Collection; Buckingham Palace (C. I. 37)



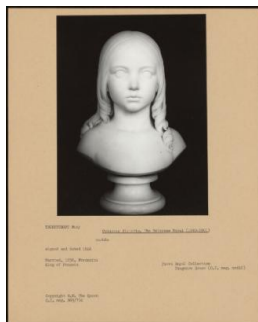
**: PA-F01223-0055**  
**Title:** Diana the Huntress  
**Provenance:** Queen Victoria; Royal Collection Buckingham Palace (no. 69)



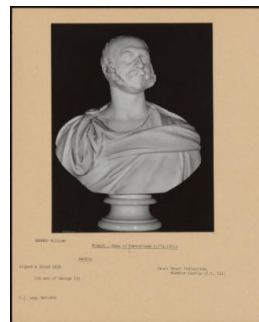
**: PA-F01224-0003**  
**Title:** Prince George of Cumberland (1819-1878)  
**Provenance:** Royal Collection, Frogmore House (Courtauld Photographic Survey No. 426)



**: PA-F01224-0013**  
**Title:** The Prince of Wales, Later Edward VII (1841-1910) as "Winter"  
**Provenance:** Royal Collection, Frogmore House (Courtauld Photographic Survey No. 431)



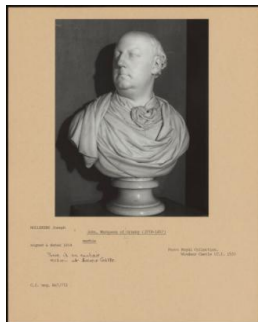
**: PA-F01224-0021**  
**Title:** Princess Victoria, the Princess Royal (1840-1901)  
**Provenance:** Royal Collection, Frogmore House (Courtauld Photographic Survey No. 442)



**: PA-F01227-0033**  
**Title:** Ernest, . Duke of Cumberland (1771-1851)  
**Provenance:** Royal Collection, Windsor Castle (Courtauld Photographic Survey 111)



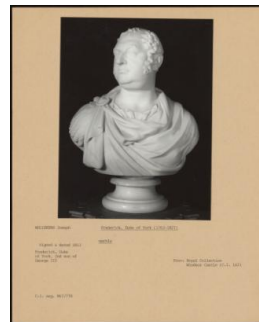
**: PA-F01227-0055**  
**Title:** George II  
**Provenance:** Commissioned by Queen Caroline for her New Library, St James's Park. By descent t Royal Collection; Windsor Castle (Courtauld Photographic Survey 177)



**: PA-F01227-0077**

**Title:** John, Marquess of Granby (1778-1857)

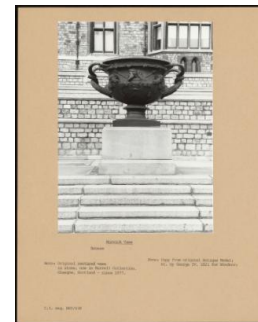
**Provenance:** Royal Collection, Windsor Castle (Courtauld Photographic Survey 153)



**: PA-F01227-0135**

**Title:** Frederick, Duke of York (1763-1827)

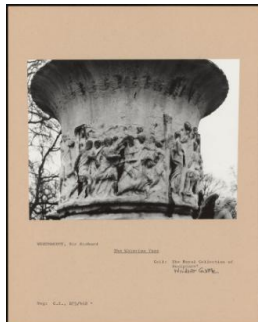
**Provenance:** Royal Collection, Windsor Castle (Courtauld Photographic Survey 162)



**: PA-F01227-0141**

**Title:** Warwick Vase

**Provenance:** Copy from original Antique Model; bought by George IV, 1821 for Windsor;



**: PA-F01227-0149**

**Title:** The Waterloo Vase

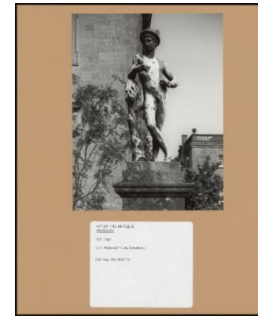
**Provenance:** The Royal Collection of Sculpture; Windsor Castle



**: PA-F01228-0005**

**Title:** Head of the Young Bacchus (Front View)

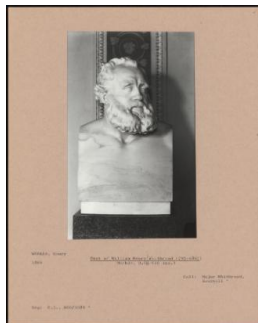
**Provenance:** Sizergh Castle, NT.



**: PA-F01229-0005**

**Title:** Mercury

**Provenance:** National Trust, Stourhead



**: PA-F01238-0007**

**Title:** Bust of William Henry Whitbread 1795-1867

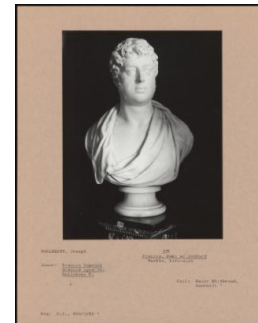
**Provenance:** Major Whitbread, Southill



**: PA-F01238-0029**

**Title:** Samuel Whitbread II (1790-1815)

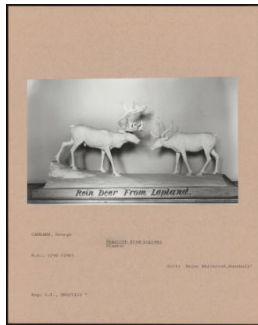
**Provenance:** Lady Elizabeth Whitbread, thence by descent, Southill Collection (Courtauld Photographic Survey 142)



**: PA-F01238-0039**

**Title:** Francis, 5th Duke of Bedford

**Provenance:** Collection; Major Whitbread, Southill



**: PA-F01238-0047**

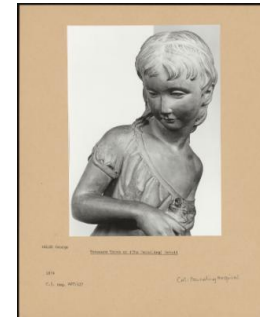
**Title:** Reindeer From Lapland

**Provenance:** Major Whitbread, Southill



**: PA-F01206-0043**

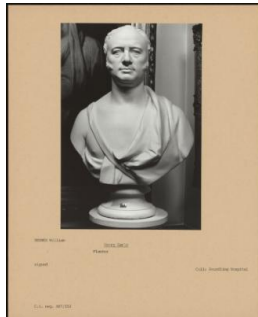
**Title:** Bacchante Asleep



**: PA-F01207-0007**

**Title:** Treasure Trove or "The Foundling" (detail)

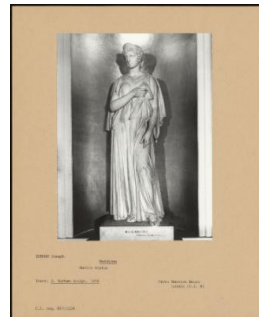
**Provenance:** Foundling Hospital



**: PA-F01207-0021**

**Title:** Henry Earle

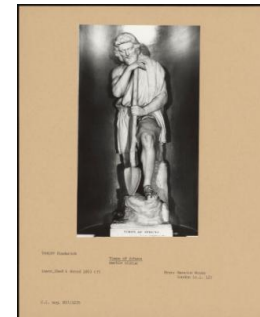
**Provenance:** Foundling Hospital



**: PA-F01210-0009**

**Title:** Hermione

**Provenance:** Mansion House, London (Courtauld Photographic Survey 4)



**: PA-F01210-0025**

**Title:** Timon of Athens

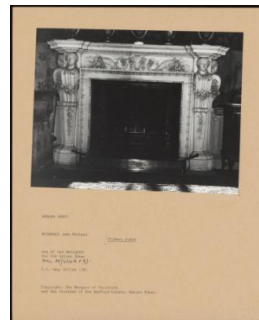
**Provenance:** Mansion House, London (Courtauld Photographic Survey 12)



**: PA-F01213-0091**

**Title:** Bishop Thomas Fanshawe Middleton

**Provenance:** St. Paul's Cathedral (Courtauld Photographic Survey 4)



**: PA-F01241-0003**

**Title:** Chimney Piece

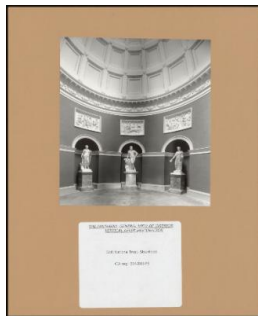


**: PA-F01229-0007**

**Title:** Meleager, Three Quarter View From Left

**Provenance:** National Trust, Stourhead

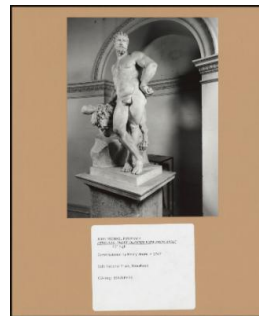




**: PA-F01229-0009**

**Title:** The Pantheon: General View of Interior Vertical after Restoration

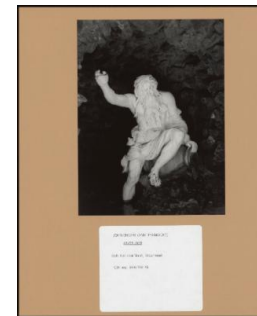
**Provenance:** National Trust, Stourhead



**: PA-F01229-0013**

**Title:** Hercules, Three Quarter View From Right

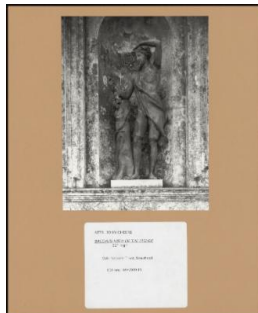
**Provenance:** National Trust, Stourhead



**: PA-F01229-0069**

**Title:** River God

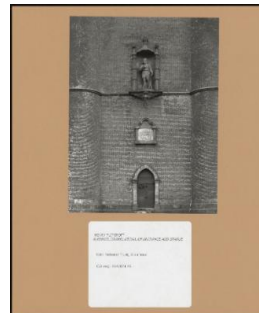
**Provenance:** National Trust, Stourhead



**: PA-F01229-0077**

**Title:** Bacchus-View of the Figure

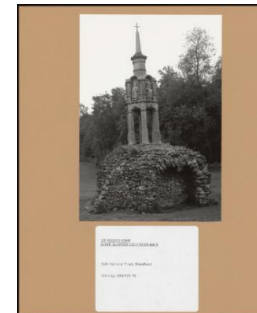
**Provenance:** National Trust, Stourhead



**: PA-F01229-0105**

**Title:** Alfred's Tower; (detail) of Entrance and Statue

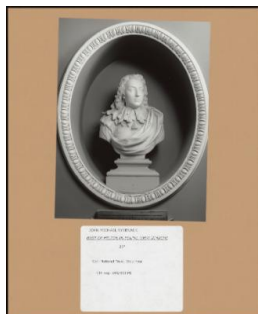
**Provenance:** National Trust, Stourhead



**: PA-F01229-0109**

**Title:** St Peter's Pump Three Quarter View From Back

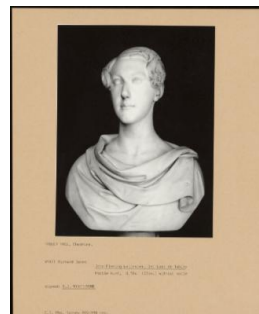
**Provenance:** National Trust, Stourhead



**: PA-F01229-0171**

**Title:** Bust of Milton in Youth: View in Niche

**Provenance:** National Trust, Stourhead



**: PA-F01230-0005**

**Title:** John Fleming Leicester, 1st Lord De Tabley

**Provenance:** WYATT Richard James



**: PA-F01238-0009**

**Title:** Flora—After the Antique

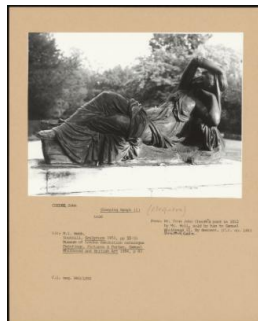
**Provenance:** bought from John Cheere's yard in 1812, by Mr Bell, sold by him to Samuel Whitbread II. By descent (Courtauld Photographic Survey 158), South Hill Collection.



**: PA-F01238-0021**

**Title:** Winter

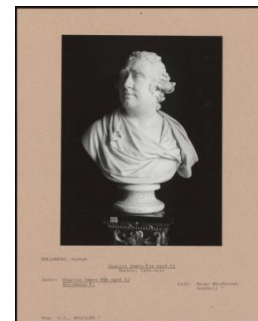
**Provenance:** bought from John Cheere's yard in 1812, by Mr Bell, sold by him to Samuel Whitbread II. By descent (Courtauld Photographic Survey 152), South Hill Collection.



**: PA-F01238-0027**

**Title:** Sleeping Nymph (I)

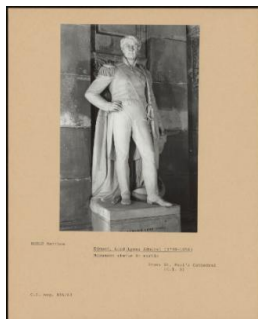
**Provenance:** bought from John Cheere's yard in 1812, by Mr Bell. Sold by him to Samuel Whitbread II. By descent (Courtauld Photographic Survey No. 146), South Hill Collection



**: PA-F01238-0037**

**Title:** Charles James Fox Aged 43

**Provenance:** Collection; Major Whitbread, Southill



**: PA-F01213-0099**

**Title:** Edmund, Lord Lyons Admiral (1790-1858)

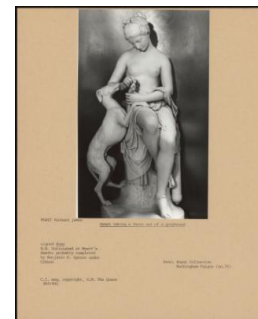
**Provenance:** St. Paul's Cathedral (Courtauld Photographic Survey 5)



**: PA-F01223-0053**

**Title:** Marble Fireplace with Busts of George IV and William IV

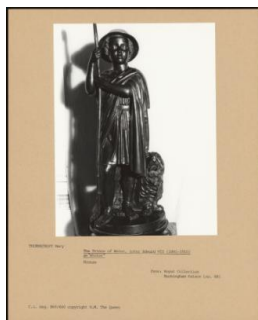
**Provenance:** Royal Collection Buckingham Palace (no. 68, Courtauld Photographic Survey Pho. Survey)



**: PA-F01223-0057**

**Title:** Nymph Taking a Thorn Out of a Greyhound

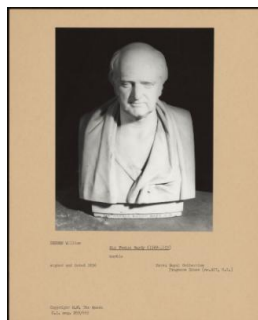
**Provenance:** Royal Collection Buckingham Palace (no. 70)



**: PA-F01223-0059**

**Title:** The Prince of Wales, Later Edward VII (1841-1910) as "Winter"

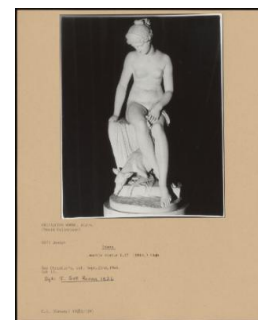
**Provenance:** Royal Collection Buckingham Palace (no. 88)



**: PA-F01224-0005**

**Title:** Sir Thomas Hardy (1769-1839)

**Provenance:** Royal Collection, Frogmore House (no. 427, C. I.)



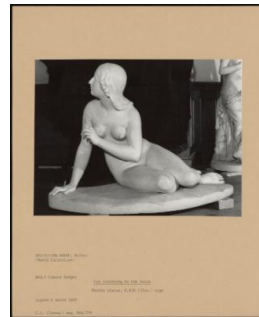
**: PA-F01206-0041**

**Title:** Diana



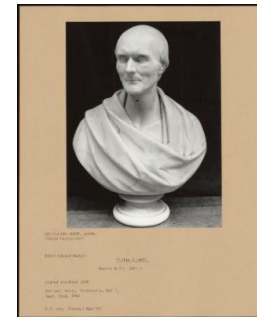
: PA-F01206-0045

Title: Musidora



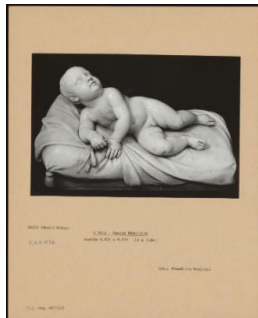
: PA-F01206-0025

Title: Eve Listening to the Voice



: PA-F01206-0049

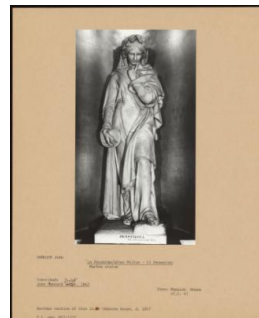
Title: Philip Rundell



: PA-F01207-0013

Title: A Baby—George Blakiston

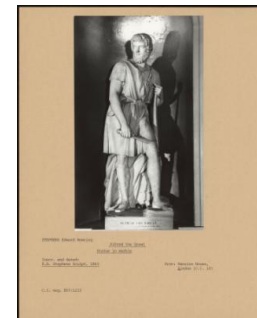
Provenance: Foundling Hospital



: PA-F01210-0013

Title: La Penserosa' after Milton—11 Penseroso

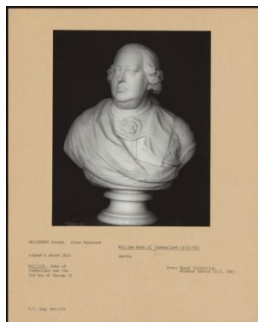
Provenance: Mansion House, (Courtauld Photographic Survey 6)



: PA-F01210-0021

Title: Alfred the Great

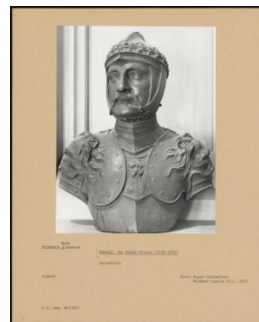
Provenance: Mansion House, London (Courtauld Photographic Survey 10)



: PA-F01227-0035

Title: William Duke of Cumberland (1721-65)

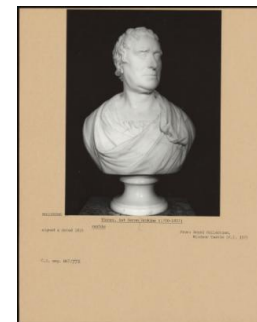
Provenance: Royal Collection; Windsor Castle (Courtauld Photographic Survey 164)



: PA-F01227-0041

Title: Edward, the Black Prince (1330-1376)

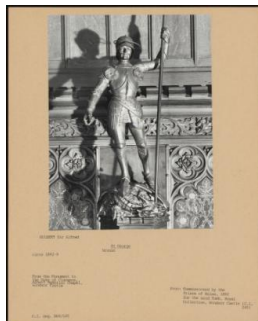
Provenance: Royal Collection; Windsor Castle (Courtauld Photographic Survey 352)



: PA-F01227-0049

Title: Thomas, 1st Baron Erskine (1750-1823)

Provenance: Royal Collection, Windsor Castle (Courtauld Photographic Survey 157)



**: PA-F01227-0053**

**Title:** St George

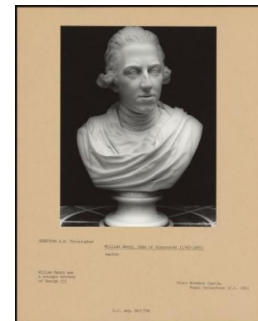
**Provenance:** Commissioned by the Prince of Wales, 1892 for the said Tomb. Royal Collection, Windsor Castle (Courtauld Photographic Survey 240)



**: PA-F01227-0057**

**Title:** George II (1683-1760)

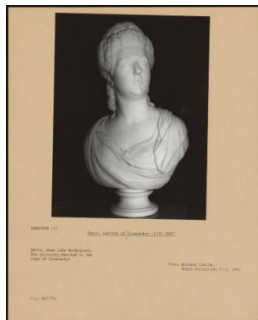
**Provenance:** Royal Collection; Windsor Castle (Courtauld Photographic Survey Neg. 350)



**: PA-F01227-0069**

**Title:** William Henry, Duke of Gloucester (1743-1805)

**Provenance:** Windsor Castle, Royal Collection (Courtauld Photographic Survey 145)



**: PA-F01227-0071**

**Title:** Maria, Duchess of Gloucester (1736-1807)

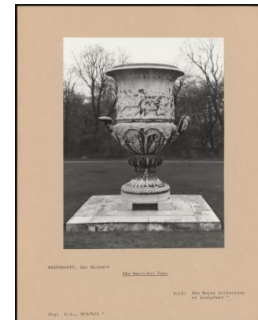
**Provenance:** Windsor Castle, Royal Collection (Courtauld Photographic Survey 144)



**: PA-F01227-0075**

**Title:** General Gordan (1833-1885)

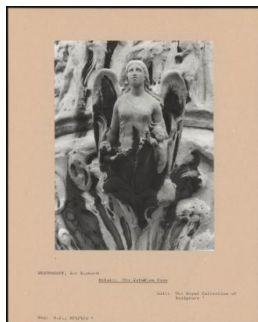
**Provenance:** Royal Collection, Windsor Castle (118)



**: PA-F01227-0143**

**Title:** The Waterloo Vase

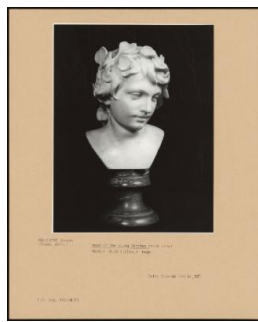
**Provenance:** The Royal Collection of Sculpture



**: PA-F01227-0157**

**Title:** detail: the Waterloo Vase

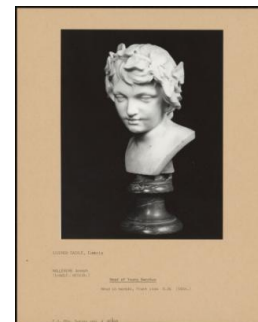
**Provenance:** The Royal Collection of Sculpture



**: PA-F01228-0003**

**Title:** Head of the Young Bacchus (Side View)

**Provenance:** Sizergh Castle, NT.



**: PA-F01228-0007**

**Title:** Head of Young Bacchus





**: PA-F01229-0071**

**Title:** The Nymph of the Grotto

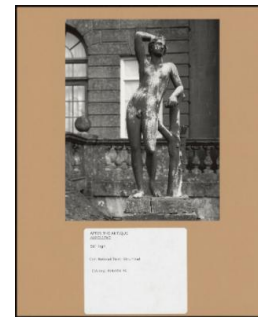
**Provenance:** National Trust,  
Stourhead



**: PA-F01229-0073**

**Title:** Bust of Alexander the  
Great

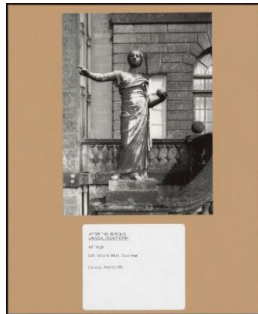
**Provenance:** National Trust,  
Stourhead



**: PA-F01229-0085**

**Title:** Apollino

**Provenance:** National Trust,  
Stourhead



**: PA-F01229-0087**

**Title:** Urania, Front View

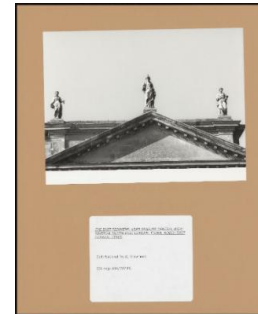
**Provenance:** National Trust,  
Stourhead



**: PA-F01229-0091**

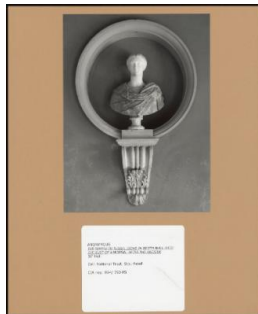
**Title:** Chimney Piece and  
Overmantel From the House at  
Warendon.

**Provenance:** National Trust,  
Stourhead



**: PA-F01229-0107**

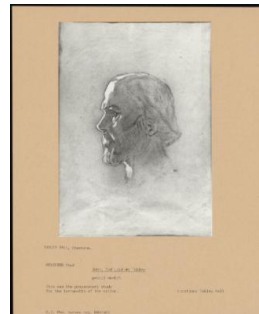
**Title:** The East Pediment:  
Lead Statues Central Apex:  
Minerva, South East Corner:  
Flora, North East Corner: Ceres  
**Provenance:** National Trust,  
Stourhead



**: PA-F01229-0113**

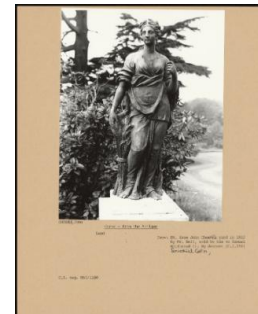
**Title:** The Temple of Flora:  
Niche in South Wall with the  
Best of a Woman, after the  
Antique

**Provenance:** National Trust,  
Stourhead



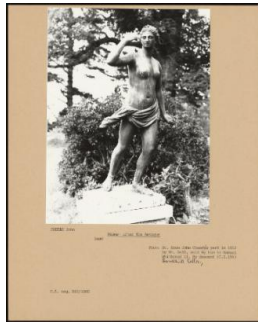
**: PA-F01230-0011**

**Title:** John, 3rd Lord De Tabley  
**Provenance:** MONTFORD  
Paul



**: PA-F01238-0013**

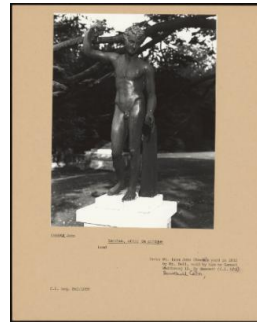
**Title:** Ceres—From the Antique  
**Provenance:** bought from  
John Cheere's yard in 1812, by  
Mr Bell, sold by him to Samuel  
Whitbread II. By descent  
(Courtauld Photographic  
Survey 154), South Hill  
Collection.



**: PA-F01238-0017**

**Title:** Diana—After the Antique

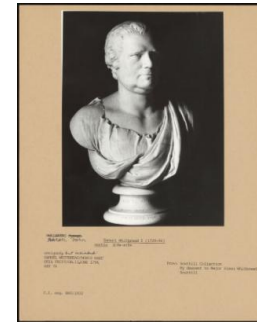
**Provenance:** bought from John Cheere's yard in 1812, by Mr Bell, sold by him to Samuel Whitbread II. By descent (Courtauld Photographic Survey 156), South Hill Collection.



**: PA-F01238-0019**

**Title:** Bacchus—After the Antique

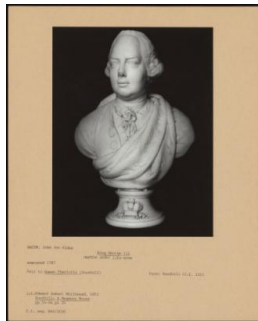
**Provenance:** bought from John Cheere's yard in 1812, by Mr Bell, sold by him to Samuel Whitbread II. By descent (Courtauld Photographic Survey 153), South Hill Collection.



**: PA-F01238-0041**

**Title:** Samuel Whitbread I (1720–96)

**Provenance:** Southill Collection By descent to Major Simon Whitbread, Southill



**: PA-F01238-0045**

**Title:** King George III

**Provenance:** Southill (Courtauld Photographic Survey 131)