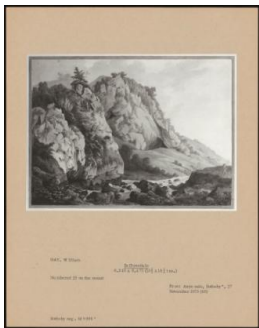


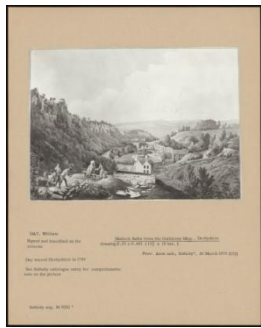
Basic Report



: PA-F02944-0011
Title: In Dovedale
Provenance: Anonymous sale, Sotheby's, 27 November 1975 (65)



: PA-F02944-0003
Title: The Cotton Works & Bridge At Cromford, Derbyshire
Provenance: Anonymous sale, Sotheby's, 26 March 1975 (151)



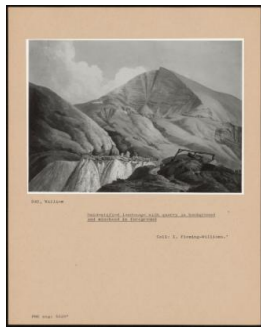
: PA-F02944-0005
Title: Matlock Baths From The Guilderoy Mine, Derbyshire
Provenance: Anonymous sale, Sotheby's, 26 March 1975 (152)



: PA-F00349
Title: PA-F00349



: PA-F02944
Title: PA-F02944



: PA-F02944-0007
Title: Unidentified Landscape With Quarry In Background And Minehead In Foreground
Provenance: I. Fleming-Williams.



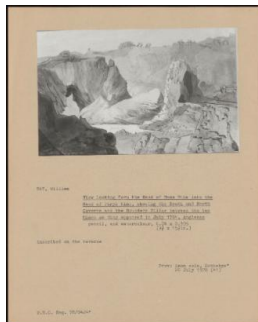
: PA-F00349-0005
Title: PA-F00349-0005



: PA-F00349-0003
Title: PA-F00349-0003



: PA-F00349-0007
Title: Matlock Baths From the Guilderoy Mine at the Head of the Valley, Derbyshire



: PA-F02944-0013

Title: View Looking From The Head Of Mona Mine Into The Head Of Parys Mine, Showing The South And North Caverns And The Boundary Pillar Between The Two Mines As They Appeared In July 1794, Anglesea

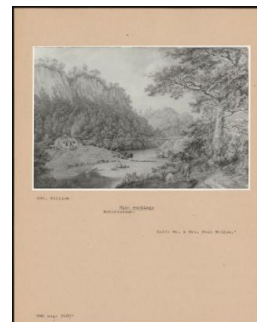
Provenance: Anonymous sale, Sotheby's, 20 July 1978 (41)



: PA-F02944-0015

Title: Part Of Pevensey Castle, Sussex

Provenance: Anonymous sale, Christie's, 9 November 1976 (45)



: PA-F02944-0009

Title: Mine Workings

Provenance: Paul Mellon (1907–1999).