

Basic Report



: PA-F08020
Title: PA-F08020



: PA-F08020-0027
Title: Portrait Of Mary, Duchess Of Norfolk (+1705), Nee Lady Mary Mordaunt, Daughter Of Henry, 2nd Earl Of Peterborough; Wife Of Henry, 7th Duke Of Norfolk (1653-1701) (Divorced 1700) And Afterwards Of Sir John Germaine, Bt (1650-1718); As Diana, The Huntress, Reclining In A Landscape; Wearing A White Dress With A Fringed And Embroidered Blue Wrap
Provenance: Private Property of Charles Stopford Sackville, Esq. , Drayton House



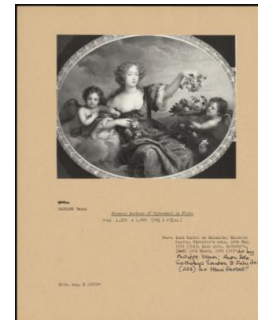
: PA-F08020-0041
Title: Portrait Of The Duchess Of Portsmouth
Provenance: Anonymous sale, Sotheby's, 22 March 1972 (85) bought R. V. Cook



: PA-F08020-0047
Title: Portrait Of Charles Lennox, Ne Fitzroy, Duke Of Richmond And Lennox (1672-1723), Son Of Charles II And Louise De Keroualle, Duchess Of Portsmouth; As A Boy, Wearing Classicizing Armour With A Red Cloak
Provenance: (Private Goodwood House Ref: B8 /1291)



: PA-F08020-0051
Title: Lady Mary Somalia & Lady Anne Barrington
Provenance: Christie's, NY January 12 1996 (331)



: PA-F08020-0057
Title: Frances Duchess Of Tyrconnel As Flora
Provenance: Lord Talbot de Malahide, Malahide Castle; Christie's, sale, 10 May 1976 (514), Anonymous sale, Sotheby's, 13th March 1985 (33) as by Philippe Vignon; Anonymous sale, Sotheby's London, 8 July 2010 (223) as Henri Gascars.



: PA-F08020-0017

Title: Portrait Of Hortense Mancini, Duchess Of Mazarin, In A White Blouse And Pink Wrap, With A Landscape Beyond

Provenance: Anonymous sale, Christie's South Kensington, 4 March 2004 (293)



: PA-F08020-0029

Title: Portrait Of Louise De Keroualle, Duchess Of Portsmouth (1645-1734), Holding A Shell Containing Pearls And A Branch Of Coral

Provenance: (Private Goodwood House Ref: B8 /1288)



: PA-F08020-0031

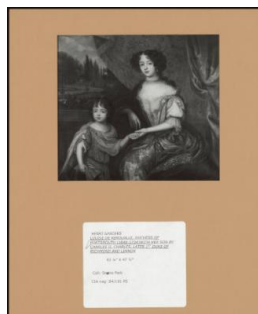
Title: Portrait Of Louise De Keroualle, Duchess Of Portsmouth (1645-1734), Standing By A Carved Plinth With A Coronet On A Cushion, And Wearing Ermine-Lined Blue Velvet Robes Over A Rose-Coloured Dress;

Provenance: (Private Goodwood House Ref: B8 /1286)



: PA-F08020-0019

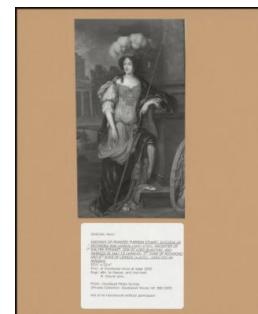
Title: Portrait Of Madame Françoise Athenaise De Mortennant De Montespan (1641-1707) As St Mary Magdalene



: PA-F08020-0043

Title: Louise De Keroualle, Duchess Of Portsmouth (1649-1734) With Her Son By Charles II, Charles, Later 1st Duke Of Richmond And Lennox

Provenance: Dence Park



: PA-F08020-0045

Title: Portrait Of Frances Theresa Stuart, Duchess Of Richmond And Lennox (1647-1702), Daughter Of Walter Stewart, Son Of Lord Blantyre, And Married In 1667 To Charles, 3rd Duke Of Richmond And 4th Duke Of Lennox (+1672); Depicted As Minerva

Provenance: at Goodwood since at least 1839; (Private Goodwood House ref: B8 /1285)



: PA-F08020-0013

Title: James, Duke Of York

Provenance: National Maritime Museum



: PA-F08020-0033

Title: Portrait Of Louise De Keroualle, Duchess Of Portsmouth (1645-1734), With Her Son Charles, Fitzroy, Later Lennox, Created 1st Duke Of Richmond And Lennox (1672-1723), As The Young Cupid

Provenance: (Private Goodwood House Ref: B8 /1287)



: PA-F08020-0055

Title: Sir Richard Temple (1634-1697)

Provenance: Anonymous sale, Sotheby's, 18 March 1981 (25)



: PA-F08020-0003

Title: Robert Bartie, 1st Duke Of Ancaster (1660-1723)

Provenance: Duke of Ancaster, Grimsthorpe Castle



: PA-F08020-0007

Title: King Charles II And His Attendants



: PA-F08020-0015

Title: A Little Boy, Probably Prince James Francis Edward Stuart

Provenance: Viscount Dillon, Ditchley, Oxon, (whose ancestor Sir Edward Lee married Lady Charlotte Fitzroy, an illegitimate daughter of Charles II through whom a number of Jacobite portraits, of which this was one, came into the family. The Collection was sold at Sotheby's, 24 May 1933 (25), Lady Hudson sale, Sotheby's, 23 November 1977 (6)



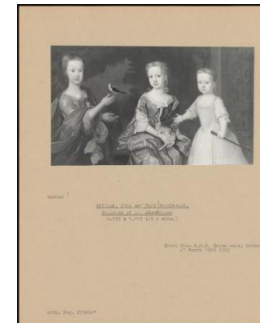
: PA-F08020-0021

Title: Portrait Of Madame Françoise Athenaise De Mortennnant De Montespan (1640-1707) Wearing A White Dress With Red And Blue Brocade (?), With A Gold, Silver And Black Brocade Robe And Blue Drapery



: PA-F08020-0025

Title: Portrait Of Henrietta Anne, Duchess Of Orleans (1644-70), Youngest Daughter Of Charles I And Wife Of Philippe, Duke Of Orleans; As Diana, Seated In A Landscape, With Putti With Flowers And Drapery, Above; Painted During Her Visit To England In 1670



: PA-F08020-0053

Title: William, John And Mary Stackhouse, Children Of Dr. Stackhouse
Provenance: Mrs E. M. S. Brice sale, Sotheby's, 21 March 1979 (58)



: PA-F08020-0011

Title: Nell Gwynne And Her Two Sons
Provenance: from Thomas Crofton Croker coll. , The Duke Of St. Albans, 1972.



: PA-F08020-0005

Title: Portrait Of Barbara Villiers, Countess Of Castlemaine (1640-1709) And Her Daughter, Lady Charlotte Fitzroy, Countess Of Lichfield
Provenance: Anonymous sale, Sotheby's London, 1 July 2004 (111)



: PA-F08020-0009

Title: Madame Ellen Groinn And Her Two Sons, Charles Earl Of Beaufort And James Lord Beauclaire
Provenance: from Thomas Crofton Croker coll. , The Duke Of St. Albans, 1972.



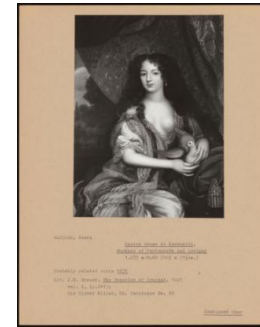
: PA-F08020-0023

Title: Portrait Of Jane 'jenny' Myddleton, Mrs May (1661-1740) As A Shepherdess
Provenance: possibly the sitter; by descent to her niece Miss Jenny Boden, by 1739; Anonymous sale, Sotheby's London, 11 July 1990 (25), Anonymous sale, Sotheby's London, 5 June 2008 (9)



: PA-F08020-0035

Title: Portrait Of Louise Renee De Penancoet De Keroualle, Duchess Of Portsmouth And Aubigny
Provenance: probably Henry, 3rd Viscount Brouncker who bequeathed his chattels to Sir Charles Lyttelton, 3rd bought (1629-1716), by descent; Property from the Estate of the late 11th Viscount Cobham; Anonymous sale, Sotheby's London 5 June 2008 (10)



: PA-F08020-0039

Title: Louise Renee De Keroualle, Duchess Of Portsmouth And Aubigny
Provenance: This picture is reputed to have been a present from the Duchess of Portsmouth to Mrs Wogan of Rathcothy; Lord Talbot de Malahide sale, Christie's, Malahide, 11 May 1976 (516)



: PA-F08020-0049

Title: Charles Lennox, 1st Duke Of Richmond
Provenance: This picture is reputed to have been a present from the Duchess of Portsmouth to Mrs Wogan of Rathcothy; Lord Talbot de Malahide sale, Christie's Malahide, 11 May 1976 (515)



: PA-F08020-0059

Title: Portrait Of A Lady



: PA-F08020-0037

Title: Louise Renee De Keroualle, Duchess Of Portsmouth And Aubigny
Provenance: Reputed to have been a present from the Duchess of Portsmouth to Mrs Wogan of Rathcothy; John Talbot of Malahide, thence by descent to the Hon. Rose Talbot; Christie's, 11 May 1976 (516), Anonymous sale, Christie's, September 26-28, 1983 (502) Luttrellstown Castle