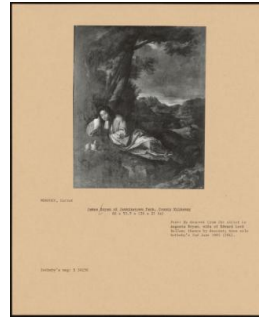


Basic Report



: PA-F04256
Title: Portraits A-Z



: PA-F04255-0003
Title: James Bryan Of Jenkinstown Park, County Kilkenny
Provenance: By descent from the sitter to Augusta Bryan, wife of Edward Lord Bellew; thence by descent; Anonymous sale, Sotheby's, 2 June 1995 (204)



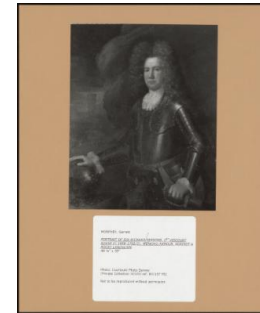
: PA-F04255-0011
Title: Portrait Of Elizabeth, Viscountess Rosse (+1724), Eldest Daughter Of George Hamilton, Count Hamilton, And 3rd Wife Of Richard, 1st Viscount Rosse (C.1656-1703)
Provenance: (Private Collection XCVIII Ref: B7/138 PS)



: PA-F04255-0009
Title: Portrait Of Mary Paulet, Viscountess Rosse (+1715), Eldest Daughter Of Lord William Paulet And 1st Wife Of Richard, 2nd Viscount Rosse, Created 1st Earl Of Rosse In 1718; Wearing A Blue Mantle
Provenance: (Private Collection XCVIII Ref: B7/140 PS)



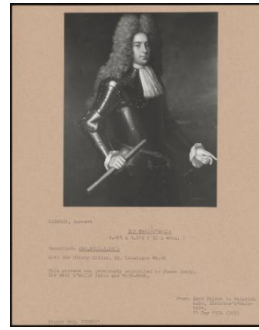
: PA-F04255-0005
Title: Portrait Of Frances, Viscountess Netterville, Daughter Of Richard, 1st Viscount Rosse, And Wife Of John, 4th Viscount Netterville (1674-1727); Wearing A Blue Wrap Lined With White And Leaning On Red Velvet
Provenance: (Private Collection XCVIII Ref: B7/139 PS)



: PA-F04255-0007
Title: Portrait Of Sir Richard Parson, 1st Viscount Rosse (C. 1656-1702/3); Wearing Armour, Against A Rocky Landscape
Provenance: (Private Collection XCVIII Ref: B7/137 PS)



: PA-F04255
Title: PA-F04255



: PA-F04256-0017
Title: Sir Neil O'neile
Provenance: Lord Talbot de Malahide sale, Christie's, Malahide, 11 May 1976 (505)



: PA-F04256-0033
Title: Lady O'neile
Provenance: Lord Talbot de Malahide sale, Christie's, Malahide, 11 May 1976 (506)



: PA-F04256-0005

Title: Lady Danby

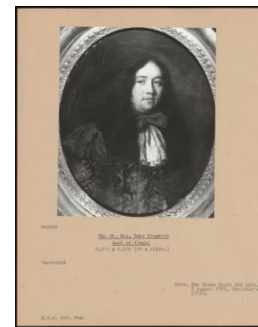
Provenance: By family descent from the Danby collection. ; The Countess Of Swinton, Swinton, Masham, Yorks



: PA-F04256-0007

Title: Sir Abstrupus Danby

Provenance: By family descent, from the Danby collection. ; The Countess Of Swinton, Swinton, Masham, Yorks.



: PA-F04256-0013

Title: The Rt. Hon. Luke Plunkett Earl Of Fingal

Provenance: The Stowe Trust Ltd sale, 5 August 1977, Christie's, (153),

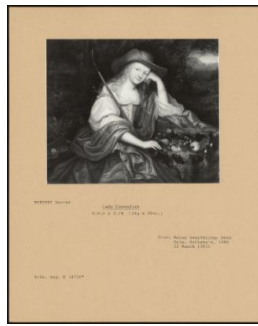


: PA-F04256-0029

Title: Hon. Frances Lane

(D1713), Daughter Of Lord Lanesborough (By His Second Wife, M. 1673)

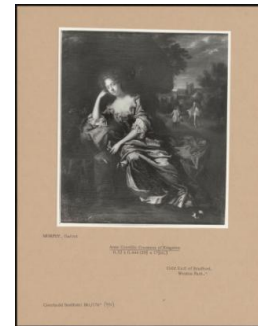
Provenance: Colonel Lane-Fox, Bramham Park



: PA-F04256-0003

Title: Lady Cavendish

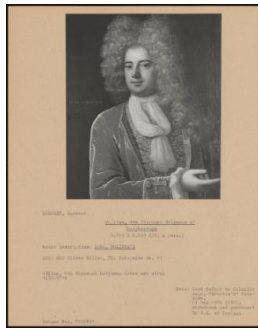
Provenance: Baron Swaythling; Anonymous sale, Sotheby's, 1986 12 March (35) 1



: PA-F04256-0027

Title: Anne Greville Countess Of Kingston

Provenance: Earl of Bradford, Weston Park.



: PA-F04256-0015

Title: William, 4th Viscount Molyneux Of Maryborough

Provenance: Lord Talbot de Malahide sale, Christie's, Malahide, 11 May 1976 (457), withdrawn and purchased by N. G. Of Ireland



: PA-F04256-0023

Title: Susan Hopton

Provenance: Anonymous sale, Sotheby's, 4 June 1980 (243)



: PA-F04256-0035

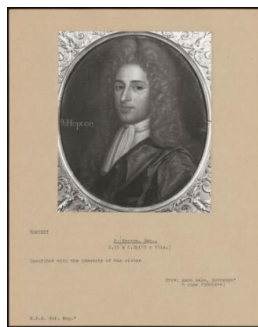
Title: Anne Howard, Viscountess Preston, Wife Of Viscount Preston. (1648-1695)
Provenance: Private Collection XV



: PA-F04256-0009

Title: Master Danby In Fancy Dress

Provenance: By family descent, from the Danby collection. ; The Countess Of Swinton, Swinton, Masham, Yorks.



: PA-F04256-0011

Title: R. Hopton, Esq.,

Provenance: Anonymous sale, Sotheby's, 4 June 1940 (244)



: PA-F04256-0021

Title: Called (Prob. Wrongly) Lady Frances Finch, (d. Of Earl Of Aylesford, Who M. 1716 Sir John Bland (C. 1691-1743) Of Kippax Park; York). She D.1758/9

Provenance: Colonel Lane-Fox, Bramham Park



: PA-F04256-0025

Title: Anne Greville Kingston, Wife Of The 4th Earl Of Brook

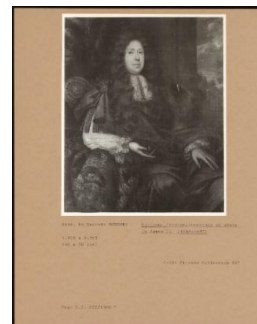
Provenance: The Earl of Bradford Weston Park



: PA-F04256-0031

Title: Bridget, Viscountess Molyneux (1665-1713)

Provenance: Lord Talbot de Malahide sale, Christie's, Malahide, 11 May 1976 (458), withdrawn and purchased by N. G. Of Ireland



: PA-F04256-0019

Title: Viscount Preston, Secretary Of State To James II (1648-1695)

Provenance: Private Collection XV