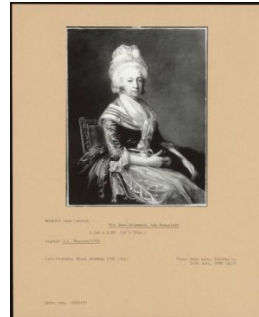


Basic Report



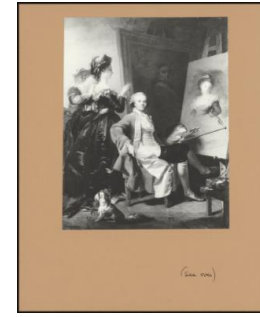
: PA-F04387-0011

Title: The Hon. Mrs. Pelham
Provenance: Anonymous sale, Christie's New York, 17 October 2006 (272)



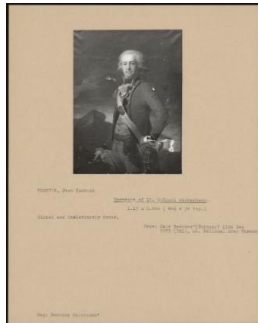
: PA-F04387-0017

Title: Mrs John Drummond, Nee Beauclerk
Provenance: Anonymous sale, Sotheby's, 11 July 1990 (61)



: PA-F04387-0003

Title: Portrait Of The Artist In His Studio
Provenance: The Hermitage, St Petersburg



: PA-F04387-0019

Title: Portrait Of Lt. Colonel Richardson.
Provenance: sale Bearnès (Torquay) 11 December 1973 (361), bought National Army Museum



: PA-F04387-0013

Title: Lady Callander (née Margaret Romer) And Her Son John
Provenance: By descent to the Countess of Breadalbane; Anonymous sale, Christie's, 24 November 1972 (109), bought Leger Galleries; Anonymous sale, Christie's 14 April 1989 (108)



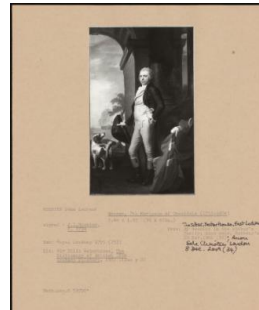
: PA-F04387

Title: PA-F04387



: PA-F04387-0005

Title: Hon. James Yorke (1730-1808) Bishop Of Ely
Provenance: Bishop's House, Ely



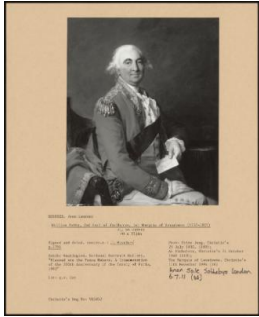
: PA-F04387-0015

Title: George, 7th Marquess Of Tweeddale (1753-1804)
Provenance: Th Sittre, Yestes House, East Lothian; By descent in the sitter's family; Anonymous sale, Sotheby's, 10 November 1982 (32), Anonymous sale, Christie's London, 8 December 2009 (34)



: PA-F04387-0007

Title: Portrait Of A Lady
Provenance: Mrs Wingate, her sale, Christie's, 16 February 1940 (118) bought by Walkers for 17 gns (as by Elizabeth Vigee-Lebrun; Anonymous sale, Sotheby's London, 7 June 2006 (166)



: PA-F04387-0009

Title: William Petty, 2nd Earl Of Shelburne, 1st Marquis Of Lansdowne (1737-1805)

Provenance: Fritz Jung, Christie's, 25 July 1930, (189), Al Nicholson, Christie's, 21 October 1949 (119), The Marquis of Lansdowne, Christie's, 11 November 1994 (16), Anonymous sale, Sotheby's London, 6. 7. 11 (46)