

# Basic Report



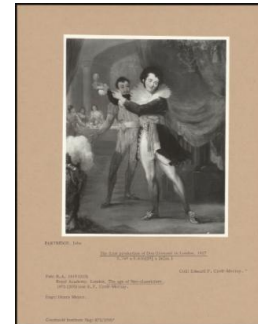
**: PA-F02454-0029**

**Title:** Christian Erskine (1789-1866), Wife Of Charles Stirling  
**Provenance:** Lt.-Col. William Joseph Stirling of Keir (1911-1983)



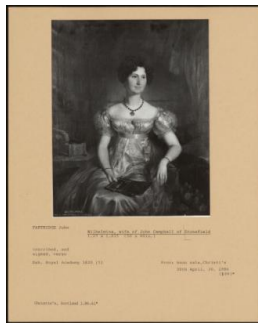
**: PA-F02454-0035**

**Title:** Queen Victoria In Coronation Robes  
**Provenance:** Lady Lucas sale Christie's, 16 Nov 1917 (98)



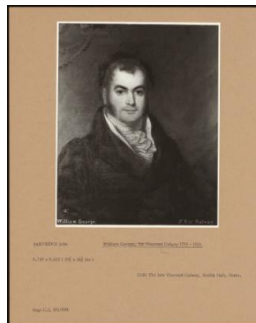
**: PA-F02454-0037**

**Title:** The First Production Of Don Giovanni In London, 1817  
**Provenance:** Edward F. Croft-Murray.



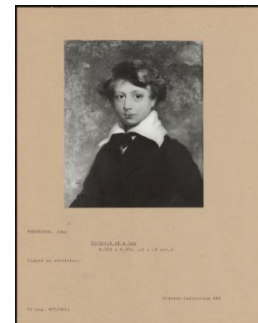
**: PA-F02454-0005**

**Title:** Wilhelmina, Wife Of John Campbell Of Stonefield  
**Provenance:** Anonymous sale, Christi's 30 April 30, 1986 (104)



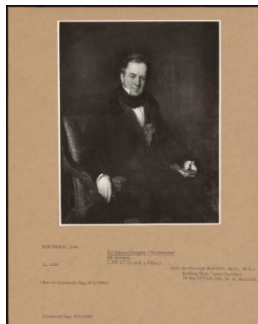
**: PA-F02454-0007**

**Title:** William George, 5th Viscount Galway 1782 - 1834  
**Provenance:** The Late Viscount Galway, Serlby Hall, Notts.



**: PA-F02454-0021**

**Title:** Portrait Of A Boy  
**Provenance:** Private Collection XXX



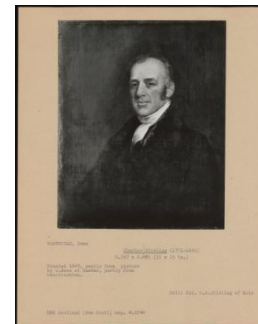
**: PA-F02454-0023**

**Title:** Sir Edward Doughty (Titchbourne) 9th Baronet.  
**Provenance:** Sir Everard Radcliffe, Bart, M. C, Rudding Park. Sold Christie's, 16 Oct 1972 lot. 348, bought A. Radcliffe.



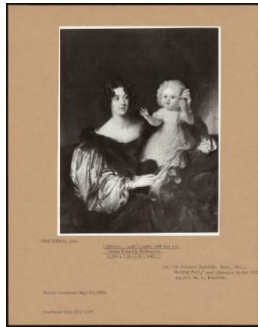
**: PA-F02454-0003**

**Title:** The Artist With His Family  
**Provenance:** By descent from the artist to the present owner; The Partridge family, their sale, Sotheby's, 10 April 1991 (98)



**: PA-F02454-0017**

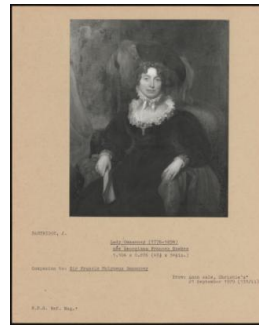
**Title:** Charles Stirling (1771-1830)  
**Provenance:** Lt.-Col. William Joseph Stirling of Keir (1911-1983)



**: PA-F02454-0025**

**Title:** Catherine, Lady Doughty With Her Son Henry Doughty Tichbourne.

**Provenance:** Sir Everard Radcliffe, Bart, M. C, Ridding Park, Sold Christie's, 16 Oct 1972, lot. 347, bought A. Radcliffe.



**: PA-F02454-0027**

**Title:** Lady Ommanney (1776-1854) Nee Georgiana Frances Hawkes

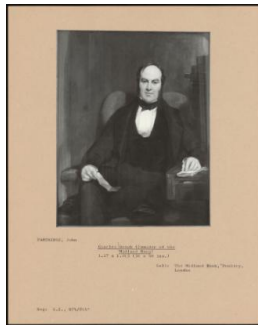
**Provenance:** Anonymous sale, Christie's, 21 September 1979 (131/ii)



**: PA-F02454-0031**

**Title:** Queen Victoria

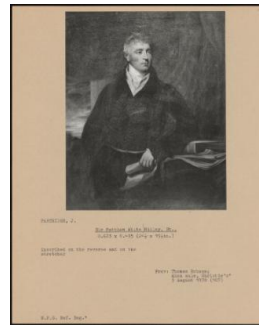
**Provenance:** formerly at Parham, (Baroness Zouche)



**: PA-F02454-0009**

**Title:** Charles Geach (Founder Of The Midland Bank)

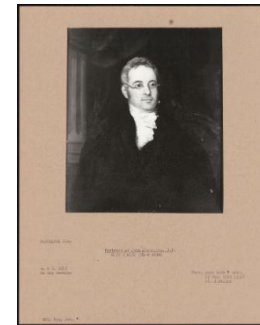
**Provenance:** The Midland Bank, Poultry, London



**: PA-F02454-0013**

**Title:** Sir Matthew White Ridley, Bt.,

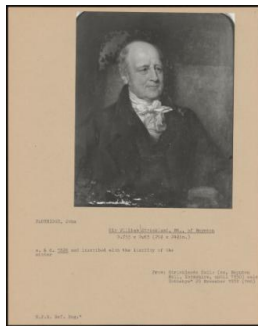
**Provenance:** Thomas Robson; Anonymous sale, Christie's, 3 August 1978 (107)



**: PA-F02454-0015**

**Title:** Portrait Of John Scott, D. L., J. P.

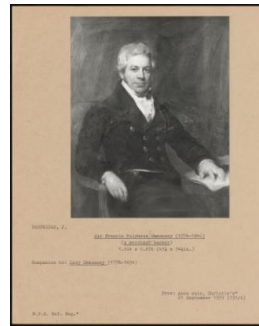
**Provenance:** Anonymous sale, Sotheby's, sale, 27 February 1974 (150) bought J. Wilson



**: PA-F02454-0019**

**Title:** Sir William Strickland, Bt., Of Boynton

**Provenance:** Stricklands (ex. Boynton Hall, Yorkshire, until 1950) sale Sotheby's, 29 November 1978 (140)



**: PA-F02454-0011**

**Title:** Sir Francis Molyneux Ommanney (1774 - 1840) (A Merchant Banker)

**Provenance:** Anonymous sale, Christie's, 21 September 1979 (131/i)



**: PA-F02454**

**Title:** PA-F02454



**: PA-F02454-0033**

**Title:** Queen Victoria, Wearing  
The Riband & Star Of The  
Garter

**Provenance:** Lady Lucas sale,  
16 Nov 1917 (97) Christie's,