

Basic Report



: PA-F02559-0005

Title: A Bacchanal

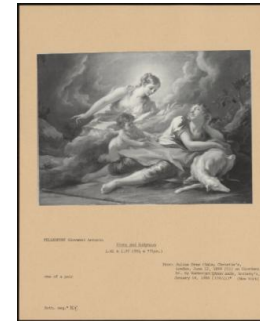
Provenance: The Fountaine family, Narford Hall, Norfolk; Agnew's 1984; Private Collection, Montreal



: PA-F02559-0007

Title: The Children Of The 1st Duke Of Manchester: William (2nd Duke), Robert (3rd Duke), Anne, Doddington, Elizabeth And Charlotte

Provenance: Kimbolton School



: PA-F02559-0013

Title: Diana And Endymion
Provenance: Julius Drew (sale; Christie's London, June 12, 1899 (51) as Giordano, bought by Hamburger), Anonymous sale, Sotheby's, (New York) January 14, 1988 (159/ii)



: PA-F02559-0015

Title: Flora

Provenance: Penicuik House



: PA-F02559-0011

Title: Paris And Oenone

Provenance: Julius Drew (sale; Christie's London, June 12, 1899, (51) as Giordano, bought by Hamburger), Anonymous sale, Sotheby's, (New York) January 14, 1988 (159/i)



: PA-F00081

Title: Kimbolton Castle, Cambs.



: PA-F02559

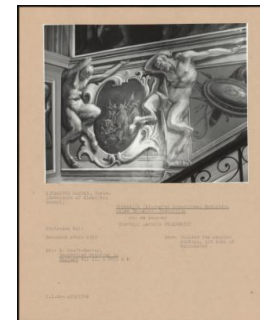
Title: PA-F02559



: PA-F02559-0003

Title: Cupid And Psyche

Provenance: Private Collection, Portugal; Anonymous sale, Sotheby's London, 9 July 2009 (177)



: PA-F00081-0003

Title: Grisaille (Blue-Grey Monochrome) Medallion Below Triumphal Procession
Provenance: KIMBOLTON CASTLE, Cambs. (Governors Of Kimbolton School), Painted For Charles Montagu, 1 Duke of Manchester



: PA-F00081-0011

Title: Fame Blowing Her Trumpet, and Minerva Pointing to a Portrait of Lord Manchester
Provenance: KIMBOLTON CASTLE, Cambs. (Governors Of Kimbolton School), Painted For Charles Montagu, 1 Duke of Manchester



: PA-F00081-0013

Title: Triumphant Procession (detail)
Provenance: KIMBOLTON CASTLE, Cambs. (Governors Of Kimbolton School), Painted For Charles Montagu, 1 Duke of Manchester



: PA-F00081-0015

Title: Venus and Cupid
Provenance: KIMBOLTON CASTLE, Cambs. (Governors Of Kimbolton School), Painted For Charles Montagu, 1 Duke of Manchester



: PA-F00081-0023

Title: Allegorical Figure of 'plenty'
Provenance: KIMBOLTON CASTLE, Cambs. (Governors Of Kimbolton School), Painted For Charles Montagu, 1 Duke of Manchester



: PA-F00081-0027

Title: The Transfiguration
Provenance: KIMBOLTON CASTLE, Cambs. (Governors Of Kimbolton School), Painted For Charles Montagu, 1 Duke of Manchester



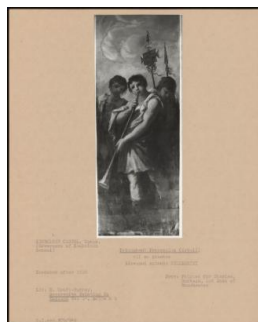
: PA-F00081-0029

Title: Musicians
Provenance: KIMBOLTON CASTLE, Cambs. (Governors Of Kimbolton School), Painted For Charles Montagu, 1 Duke of Manchester



: PA-F00081-0009

Title: Crowning of the Roman Emperor (detail From Triumphal Procession)
Provenance: KIMBOLTON CASTLE, Cambs. (Governors Of Kimbolton School), Painted For Charles Montagu, 1 Duke of Manchester



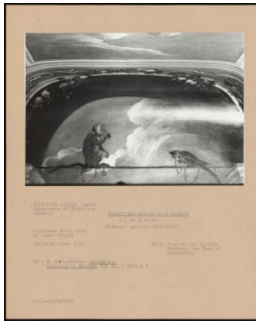
: PA-F00081-0019

Title: Triumphant Procession (detail)
Provenance: KIMBOLTON CASTLE, Cambs. (Governors Of Kimbolton School), Painted For Charles Montagu, 1 Duke of Manchester



: PA-F00081-0025

Title: Gate of Millieu Capsi, Constantinople
Provenance: KIMBOLTON CASTLE, Cambs (Governors of Kimbolton School), Painted For Charles Montagu, 1 Duke of Manchester



: PA-F00081-0031

Title: Monkey and Parrot in a Lunette

Provenance: KIMBOLTON CASTLE, Cambs. (Governors Of Kimbolton School), Painted For Charles Montagu, 1 Duke of Manchester



: PA-F00081-0033

Title: Trophy of Weapons (Colour)

Provenance: KIMBOLTON CASTLE, Cambs. (Governors Of Kimbolton School), Painted For Charles Montagu, 1 Duke of Manchester



: PA-F00081-0005

Title: Triumphant Procession (detail)

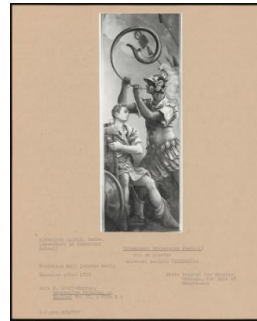
Provenance: KIMBOLTON CASTLE, Cambs. (Governors Of Kimbolton School), Painted For Charles Montagu, 1 Duke of Manchester



: PA-F00081-0007

Title: Triumphant Procession of a Roman Emperor

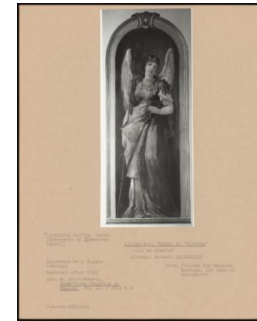
Provenance: KIMBOLTON CASTLE (Cambs.) (Governors Of Kimbolton School), Painted For Charles Montagu, 1 Duke of Manchester



: PA-F00081-0017

Title: Triumphant Procession (detail)

Provenance: KIMBOLTON CASTLE, Cambs. (Governors Of Kimbolton School), Painted For Charles Montagu, 1 Duke of Manchester



: PA-F00081-0021

Title: Allegorical Figure of 'victory'

Provenance: KIMBOLTON CASTLE, Cambs. (Governors Of Kimbolton School), Painted For Charles Montagu, 1 Duke of Manchester