

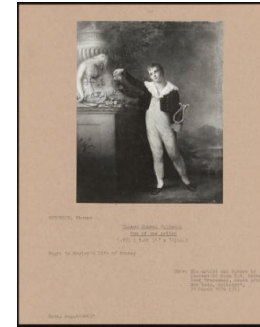
# Basic Report



**: PA-F05482**  
**Title:** PA-F05482



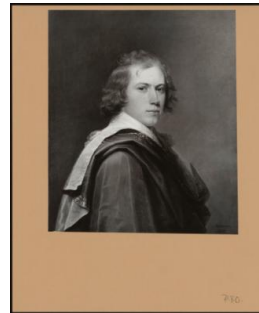
**: PA-F05482-0013**  
**Title:** A Hermit and a Young Couple before a Tomb  
**Provenance:** Anonymous sale, Sotheby's, 27 April 1983 (45)



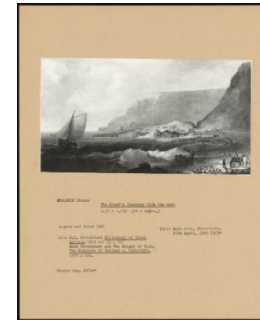
**: PA-F05482-0015**  
**Title:** Thomas Romney Robinson Son of the Artist  
**Provenance:** The artist and thence by descent to Miss M. M. Stokes East Transvaal, South Africa, Her sale, Sotheby's, 31 March 1976 (53)



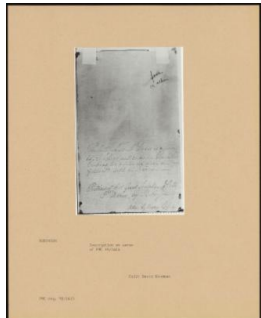
**: PA-F05482-0017**  
**Title:** A Hermit and a Young Couple  
**Provenance:** The artist's Collection; His son, Thomas Romney Robinson; thence by descent tot Miss M. M. Stokes, Her sale, Sotheby's, 31 March 1976 (54)



**: PA-F05482-0003**  
**Title:** Unknown Man  
**Provenance:** formerly St Louis Art Museum 42: 18



**: PA-F05482-0011**  
**Title:** The Giant's Causeway From the West  
**Provenance:** Anonymous sale, Christie's, 26 April 1985 (52)



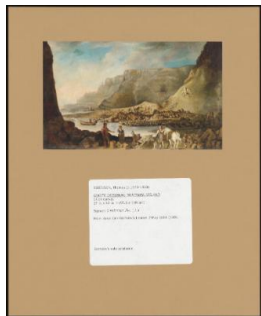
**: PA-F05482-0009**  
**Title:** PA-F05482-0009  
**Provenance:** David Bindman



**: PA-F05482-0007**  
**Title:** John Deave at the Tomb of Nero  
**Provenance:** David Bindman



**: PA-F05482-0021**  
**Title:** A Political Group at the Bishop's Palace at Dromore  
**Provenance:** National Trust, Castleward



: **PA-F05482-0005**

**Title:** Giant's Causeway,  
Northern Ireland

**Provenance:** Anonymous  
sale, Sotheby's London, 7 May  
2008 (109)



: **PA-F05482-0019**

**Title:** A Political Group at the  
Bishop's Palace at Dromore  
Key to No 24

**Provenance:** National Trust,  
Castleward