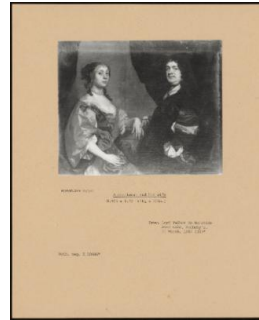


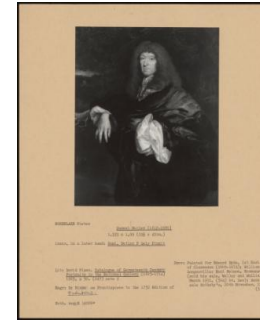
Basic Report



: PA-F08276
Title: PA-F08276



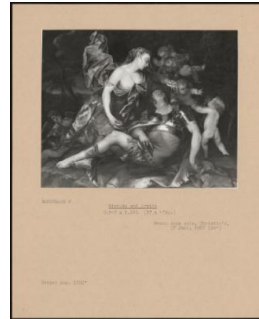
: PA-F08276-0003
Title: A Gentleman And His Wife
Provenance: Lord Talbot de Malahide Anonymous sale, Sotheby's, 11 March 1987 (30)



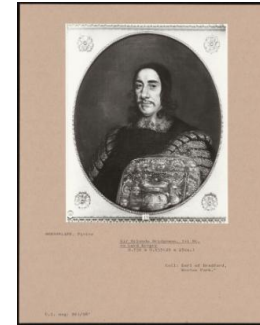
: PA-F08276-0007
Title: Samuel Butler (1612-1680)
Provenance: Painted for Edward Hyde, 1 Earl of Clarendon (1609-1674), William Longueville; Earl Nelson, Normanswood (sold his sale, Woolley and Wallis, 14 March 1951, (304) bought Lee), Anonymous sale, Sotheby's, 20 November 1985 (34)



: PA-F08276-0009
Title: Portrait Of Miss Hoby, Daughter-In-Law Of Sir Timothy Tyrell
Provenance: Sir John Tysser-Tyrell, Bart. ; Anonymous sale, Sotheby's, 19 January 1972 (32), bought Dr. Sargant



: PA-F08276-0015
Title: Rinaldo And Armida
Provenance: Anonymous sale, Christie's, 17 June 1983 (66)



: PA-F08276-0005
Title: Sir Orlando Bridgeman, 1st Bt As Lord Keeper
Provenance: Earl of Bradford, Weston Park.



: PA-F08276-0011
Title: Portrait Of A Lady
Provenance: Bequeathed by Sir E. Marsh through the National Art Collections Fund, 1953 to; Tate Gallery (6175)



: PA-F08276-0013
Title: A Man And His Wife
Provenance: Lord Talbot de Malahide sale, Christie's, Malahide, 11 May 1976 (501)